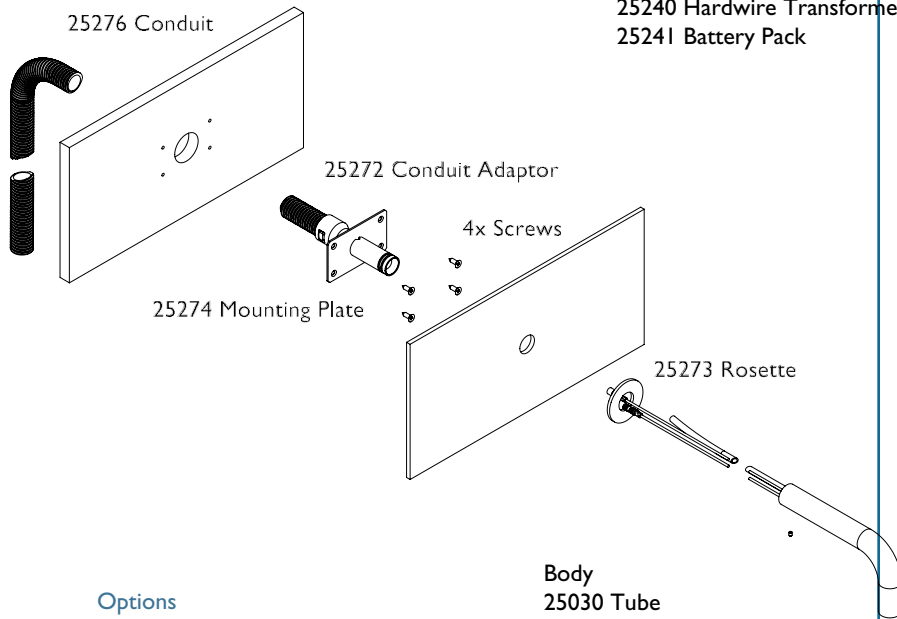


PACK CONTENTS

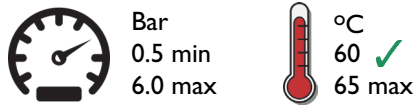


Power Supply Options:
 25147 UK Mains Adaptor
 25428 EURO Mains Adaptor
 25240 Hardwire Transformer
 25241 Battery Pack

Options



Body
 25030 Tube
 25275 Tail
 25146 Sensor Assembly
 25040 Aerator Housing
 25041 Aerator



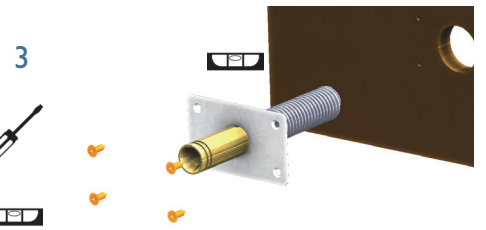
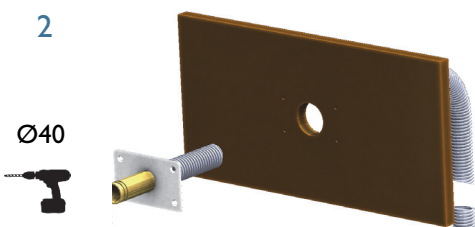
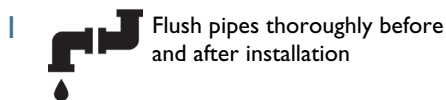
PRE INSTALLATION

- › Ensure all contents has been accounted.
- › Do not install shiny objects in line with the sensor.

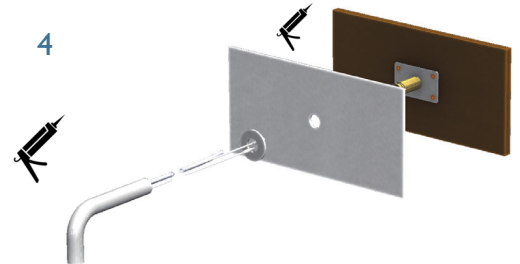
⚠ WARNING

- › All plumbing and Electrical installation must be carried out by a qualified person and in accordance with applicable codes and regulations.
- › Do not remove black label covering the infra-red sensor until the installation is ready to be switched on.
- › Do not kink the water supply hose.

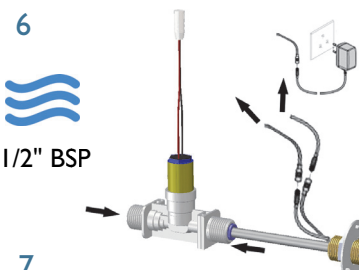
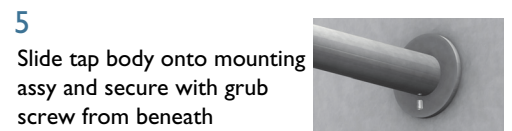
INSTALLATION



Fit the wall mounting plate with 4 screws supplied. **IMPORTANT** ensure wall plate is level as this dictates tap angle and rotation. Protect Mounting plate with low tack tape / other suitable method

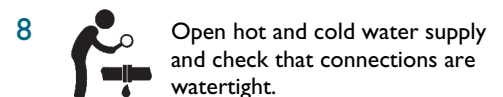


Fit Glass Splashback with adhesive (or other fixing method as required) leaving mounting assembly protruding
 Fit Rosette over mounting assembly
 Insert plugs, cables and then pipe from the tap into mounting assy and feed through



- › Remove Label that covers the sensor.
- › Switch on power supply
- › Wait 15 seconds for sensor to adjust. Red light in sensor eye will flash during self adjustment. The solenoid valve will open and close for 1 second to indicate that the sensor has been set and is ready for use.

If the sensor fails to set, please see SMART App manual for corrective action.



MAINTENANCE

DO NOT use steel wool or cleansing agents containing alcohol, acid, abrasives or the like. Use of any prohibited cleaning or maintenance products or substances could damage the surface of the tap. For surface cleaning of tap use ONLY soap and water then wipe dry with a clean soft cloth. Protect taps from splattering of harsh cleansers when cleaning surroundings.