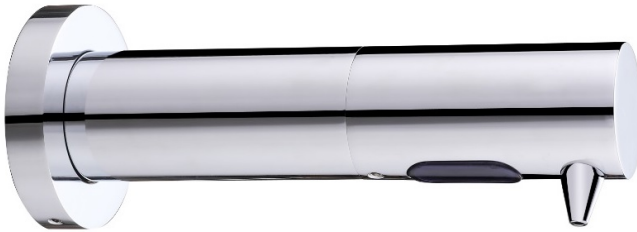


AQUAECO

WASHROOM AND PLUMBING SOLUTIONS

Installation Guide



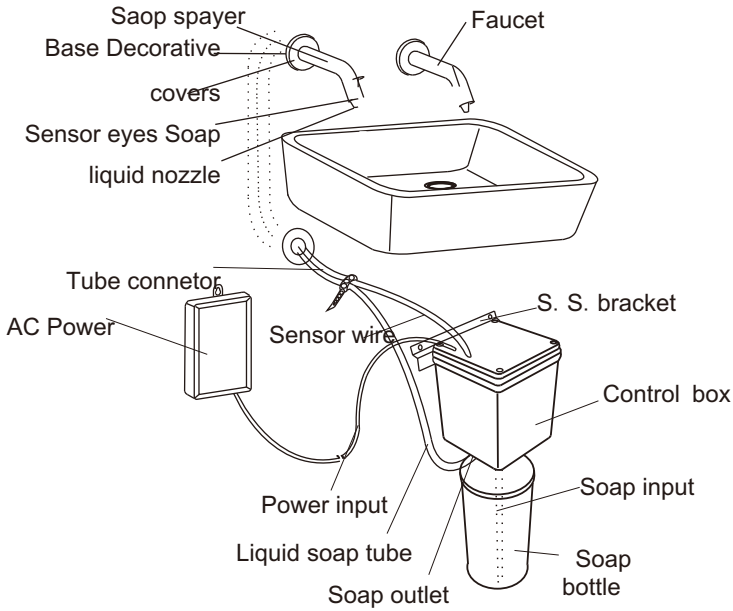
AQA-ECO-251-A-XX

AQUAECO ROUND WALL TOUCHLESS SOAP DISPENSER

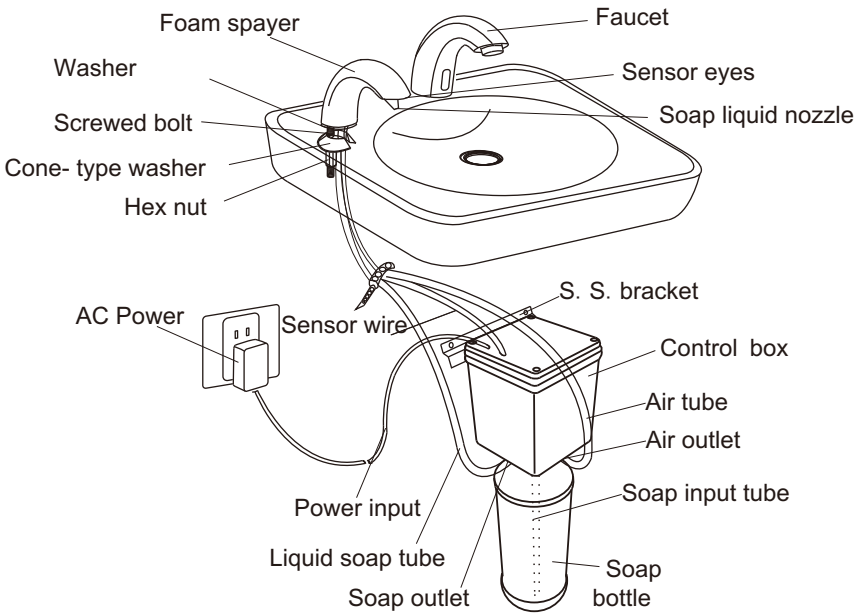
A member of SANIPEXGROUP

Parts Diagram

Soap Type



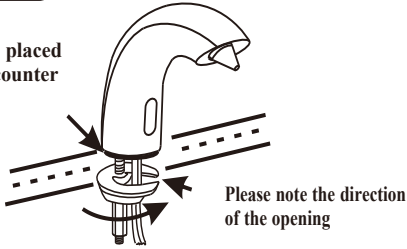
Foam Type



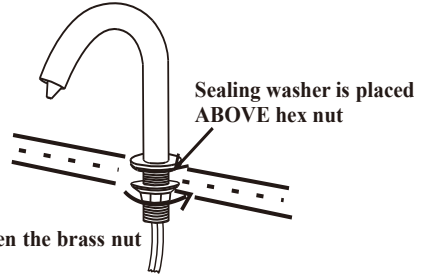
Spout Installation

Basin Type

O-ring is placed
ABOVE counter



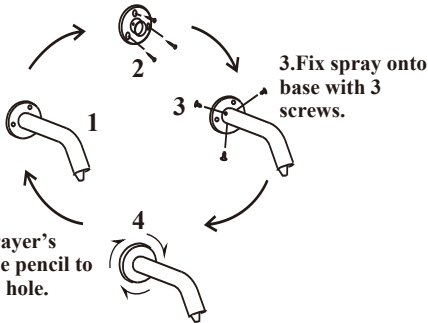
Fasten the brass nut



Fasten the brass nut

Wall

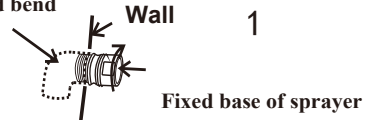
2. Drill 3 holes according to the mark,
put in 3pcs plastic, use 3pcs screw to
lock up the fixed base.



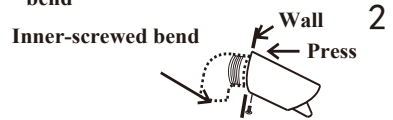
1. Adjust sprayer's
direction, use pencil to
mark screw hole.

4. Screw up the cover on sprayer, now sprayer
assembling in finished.

Inner-screwed bend



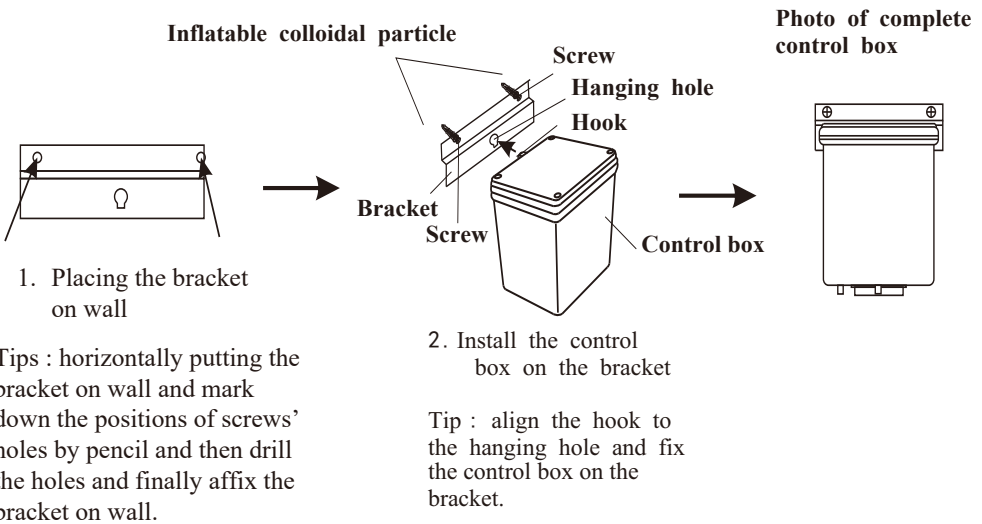
1. Screw fixed base of sprayer on inner-screwed
bend



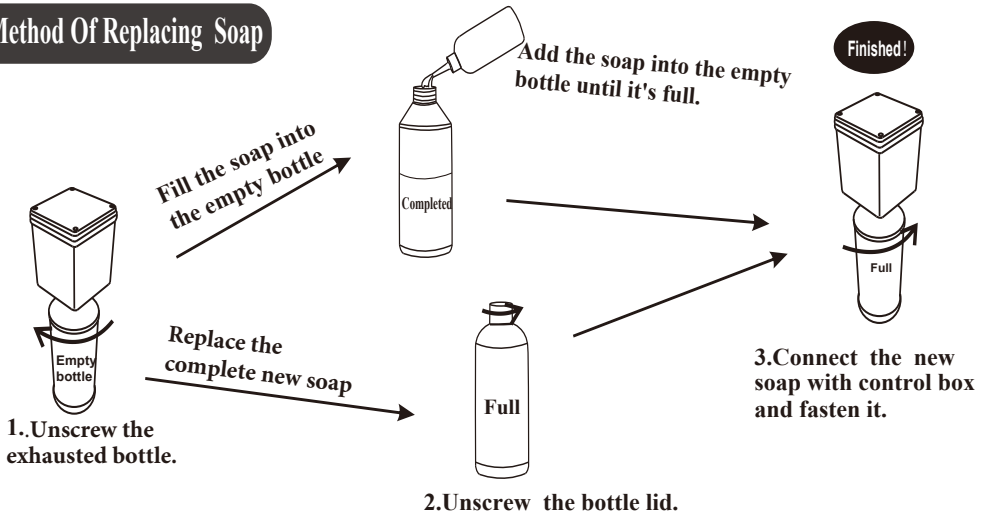
2. Press sprayer onto fixed base, sprayer touch
wall is ok, adjust sprayer to right direction,
lock up the screw.

Please exercise special care not to cut the soap hose or damage sensor cable while fastening the brass nut.

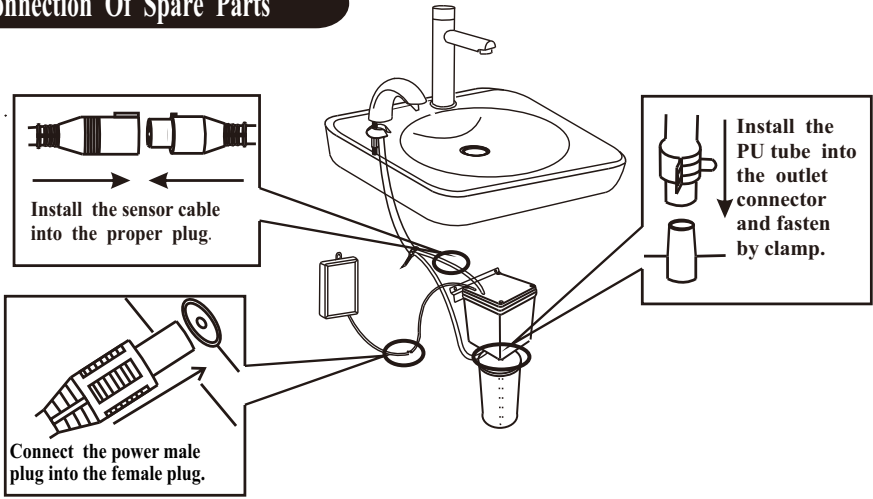
Installation Of Control Box



Method Of Replacing Soap



Connection Of Spare Parts



USE



Place hands immediately under soap spout.



Predetermined amount of soap will dispense

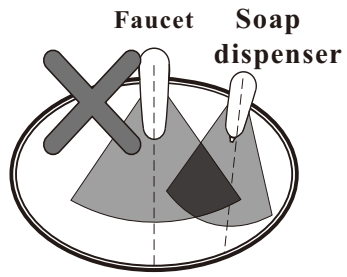


If more soap is needed, please remove hands & repeat.

Incorrect Installation

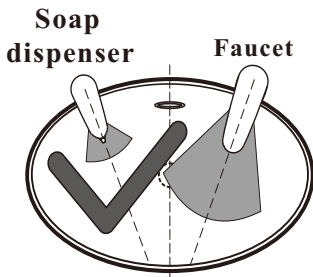


Keep sensor range adjustment within 4 inches away from center of spout. This can only be done with optional remote control.

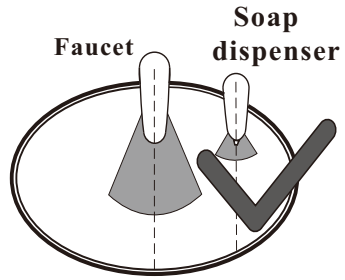


Installing electronic soap dispenser and faucet with intersecting center lines might lead to accidental activation of either or both.

Correct Installation



Keep sensor ranges factory preset.



Keep soap spout and faucet center lines parallel.

Cleaning instruction

Dear Customers:

The electroplating on this product is finished to a high standard. To keep the product surface in pristine condition, clean with a soft damp cloth only. To avoid limescale / watermarks from building up, it is advisable to wipe the fitting dry each time it is used.

Damage to the surface caused by improper cleaning/maintenance will not be covered under guarantee.

On no account should any bathroom cleaner be used on this product as these can contain acids that are aggressive/corrosive on finished surfaces!

