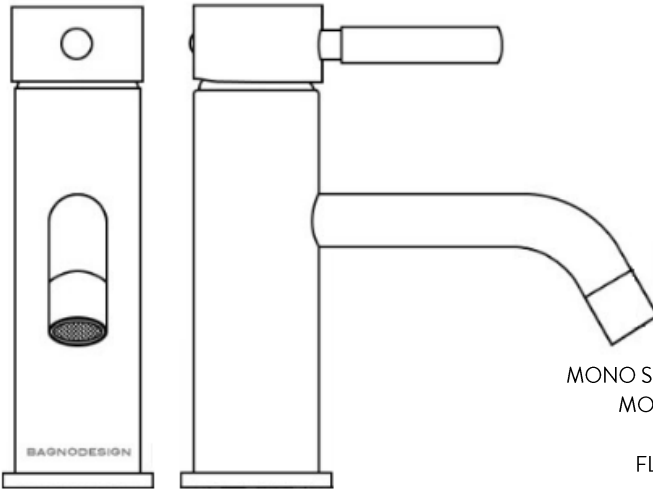


# BAGNODESIGN

EXPERTLY CRAFTED BATHROOMS

## General Installation Guide



## M-Line

- MODELS COVERED:**
- MONO BASIN MIXER W/PUW
  - MONO SMOOTH BODIED BASIN MIXER
  - MONO TALL BASIN MIXER W/PUW
  - BIDET MIXER W/PUW
  - FLOOR MOUNTED BASIN MIXER
  - TWO HOLE BASIN MIXER
  - THREE HOLE BASIN MIXER
  - CONCEALED BASIN MIXER
  - TWO HOLE CONCEALED BASIN MIXER
  - BIDET SPRAY MIXER
  - THREE HOLE CONCEALED BASIN MIXER
  - CONCEALED SHOWER MIXER
  - CONCEALED SHOWER MIXER WITH DIVERTER
  - 4 HOLE DECK MOUNTED BATH MIXER
  - FLOOR MOUNTED BATH MIXER
  - WALL MOUNTED SPOUT

Please leave these instructions with the customer

## IMPORTANT PLEASE READ

All products manufactured and supplied by BAGNODESIGN are fit for purpose as long as they are Installed, used correctly, cleaned and receive regular maintenance in accordance with these instructions...

Remove all packaging and check the product for damage or missing parts before commencing with the installation.

Any alterations made to this product and its components may infringe product certification, infringe water regulations and invalidate the guarantee. The Installation must comply with all local/national water supply authority regulations/byelaws and building and plumbing regulations, therefore we strongly recommend that your product be installed by a reputable qualified trade's person.

## PRODUCT LIFECYCLE

*"The product lifecycle is the collective stages that a product goes through from its conception and design through to its ultimate disposal."*

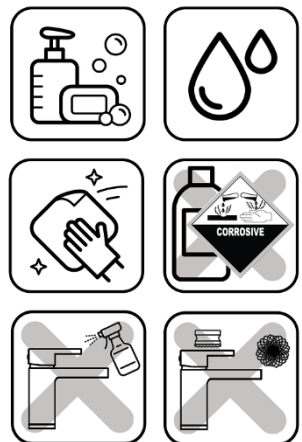
## DISPOSAL GUIDANCE

The best way to ensure your Product has a long life is to follow the Care and Maintenance guides set by the Manufacture after purchase. This document can be found at [www.bagnodesignlondon.com](http://www.bagnodesignlondon.com). The lifecycle of the product is not in correlation to the product Guarantee; the standards the products are manufactured or certified to (e.g. CE & WRAS) can exceed past the Guarantee duration. After the lifecycle of the product is deemed complete by the end-user please follow the below to dispose of the items correctly...

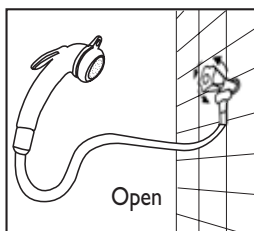
## CLEANING CARE GUIDE

Only use a mild soap and water for cleaning.  
Rinse with water to remove the mild soap solution.  
We recommend the product is dried using a soft cloth after every use.

**Never** use any abrasive or strong cleaning products containing, bleaches, acids (hydrochloric, formic, phosphorus, chlorine or acetic), strong detergents, limescale remover, alcohol or dyes etc.  
**Never** use abrasive cleaning pads, wire wool or microfibre cloths.  
**Never** use cleaning equipment that may have been pre-used and contaminated with the above substances.  
**Never** apply the cleaning product directly onto the finished surface.

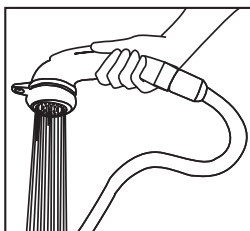


## USO CORRETTO - CORRECT USE



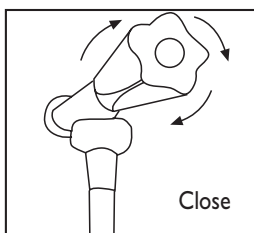
Aprire il rubinetto  
Open the tap

2



Utilizzare la doccia  
mediante leggera  
pressione sulla levetta  
pulsante

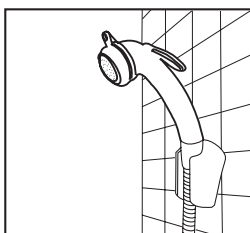
*The handshower  
operates by simply  
and lightly pressing  
on the lever*



Importante chiudere  
sempre il rubinetto  
dopo aver terminato  
l'utilizzo della doccia  
pulsante

*It is important to  
always close the tap  
once you have  
finished using the  
handshower*

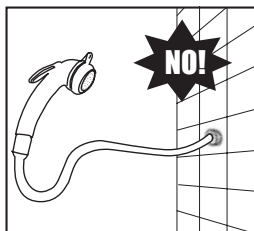
4



Infine riposizionare  
la doccia sul  
supporto

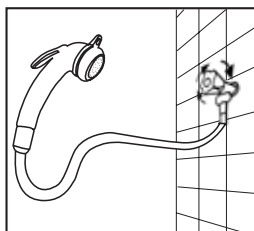
*And then hang it  
again onto its bracket*

## USO ERRATO - INCORRECT USE



È errato connettere il flessibile direttamente a muro senza rubinetto

*It is incorrect to connect the hose to the water pipe without a stop valve*



Aprire il rubinetto  
Open the tap

2



Utilizzare la doccia  
mediante leggera  
pressione sulla levetta  
pulsante

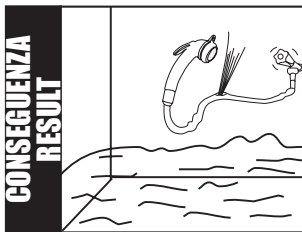
*The handshower  
operates by simply  
and lightly pressing  
on the lever*



È errato riporre la  
doccia senza aver  
prima chiuso il  
rubinetto dell'acqua

*It is incorrect  
handing the  
handspray without  
prior having turned*

4



Conseguenza: il  
flessibile potrebbe  
rompersi.....  
causando danni al  
vostro ambiente

*Result: the hose  
could burst...  
causing damages  
in your bathroom*

# BAGNODESIGN

EXPERTLY CRAFTED BATHROOMS

---

---

---

---

---

---

---

---

---

---

---

---

---

---

---

---

---

---

---

---

---

---

---

---



Oakwell Way, Birstall  
Leeds, England WF9 17LU

A member of  SANIPEXGROUP