

AQUAECO

WASHROOM AND PLUMBING SOLUTIONS

Installation Guide



AQE-DIP-3N1-CP

DIPLOMAT 3 IN 1 PACK

A member of SANIPEXGROUP
www.sanipexgroup.com

IMPORTANT PLEASE READ

All products manufactured and supplied by BAGNODESIGN are fit for purpose as long as they are Installed, used correctly, cleaned and receive regular maintenance in accordance with these instructions...

Remove all packaging and check the product for damage or missing parts before commencing with the installation.

Any alterations made to this product and its components may infringe product certification, infringe water regulations and invalidate the guarantee. The Installation must comply with all local/national water supply authority regulations/bylaws and building and plumbing regulations, therefore we strongly recommend that your product be installed by a reputable qualified trade's person.

PRODUCT LIFECYCLE

"The product LiveCyclele is the collective stages that a product goes through from its conception and design through to its ultimate disposal."

DISPOSAL GUIDANCE

The best way to ensure your Product has a long life is to follow the Care and Maintenance guides set by the Manufacture after purchase. This document can be found at www.sanipexgroup.com.

The life cycle of the product is not in correlation to the product Guarantee; the standards the products are manufactured or certified to (e.g. CE & WRAS) can exceed past the Guarantee duration. After the life cycle of the product is deemed complete by the end-user please follow the below to dispose of the items correctly...

Mixers (Taps):

If the mixers are no longer accepted due to mechanical use or aesthetic style, these can be disposed of at a registered Local Authority waste recycling center where the individual components can be sorted.

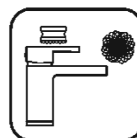
CLEANING CARE GUIDE

Only use a mild soap and water for cleaning.
Rinse with water to remove the mild soap solution.
We recommend the product is dried using a soft cloth after every use.

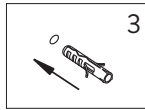
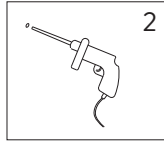
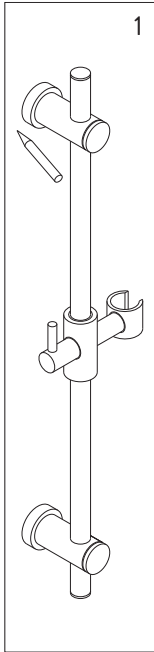
Never use any abrasive or strong cleaning products containing, bleaches, acids (hydrochloric, formic, phosphorus, chlorine or acetic), strong detergents, limescale remover, alcohol or dyes etc.

Never use abrasive cleaning pads, wire wool or microfibre cloths.
Never use cleaning equipment that may have been pre-used and contaminated with the above substances.

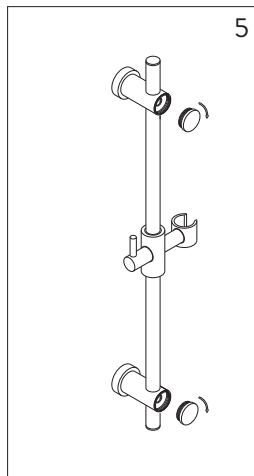
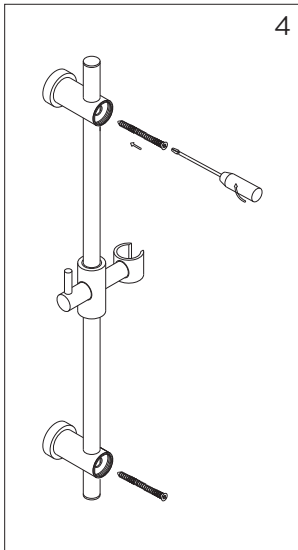
Never apply the cleaning product directly onto the finished surface.



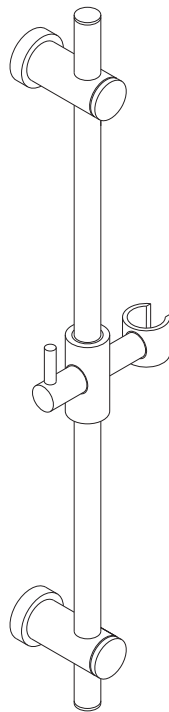
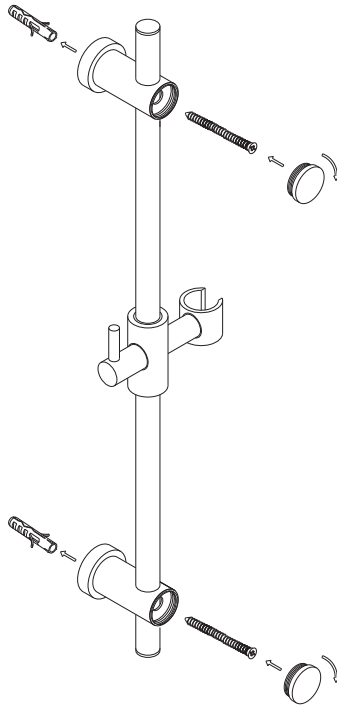
SLIDE RAIL



1. Hold the slide rail (with the fixing bracket) against the wall at the desired height.
2. Mark the drill hole position through the fixing brackets. Then drill the hole.
3. Insert the screws anchors into the hole.



4. Fix the slide rails on the wall with screws.
5. Clip the decoration cap.

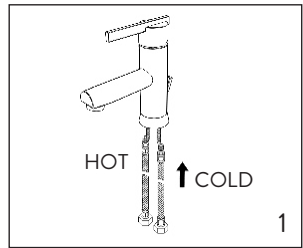


Washbasin Mixer

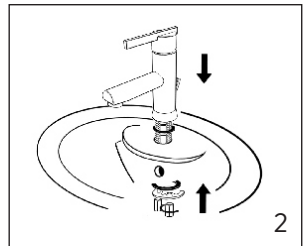
Installation Method:

Caution Before installation, clean out dirt or other impurities, which may collect in water pipes by allowing water to flow freely for a moment.

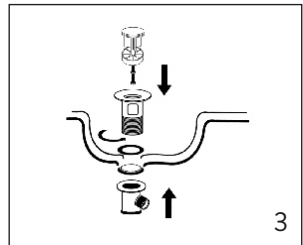
1. Mounting stud into the mixer body base, and then tighten it.



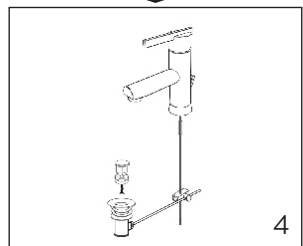
2. Insert the inlet flexible hose into the basin hole. Position the mixer. From underside of the basin, fit the deck plate on the mounting stud, and secure the mixer with the nut.



3. Take away the drain plug protector; install the pop-up set into the drain opening and tighten the mounting nut.

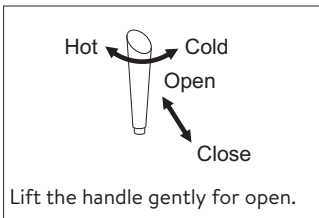
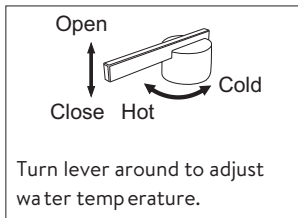
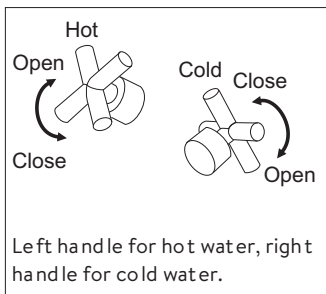


4. Connect the lift rod, pop-up set and installed mixer body by pivot rod.



Instruction

Handle Operation:



Cleaning Method

In order to maintain the shine finish of your mixer, please always clean the mixer periodically.

- Clean the finish with warm water and dry with a clean soft cloth.
- Many cleaners may contain chemicals, which could adversely affect the finish and are not recommended for cleaning.
- Do not use abrasive cleaners, solvents, sponges and tissues for cleaning.

Terms & Conditions

On the mixer you purchased you have a 5 years guarantee on the ceramic disk from the date of purchase. The guarantee does not cover:

1. Incorrect or inappropriate use of the mixer.
2. Incorrect installation or carried out with inappropriate tools.
3. Inappropriate maintenance or inappropriate use of cleaning products.
4. Components subject to ordinary wear and tear
5. Damages due to calcareous sediments or plaster flakes in the pipes.
6. Damages due to the use of spare parts other than the original ones.
7. Causes due to chemical, electrochemical, electrical influences.

Customer must present the sales invoice and this instruction guide in order to enjoy our guarantee service. Please keep your sales invoice and instruction guide safely.

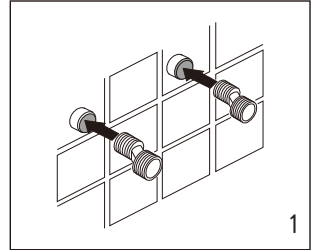
Your dealer will apply for the enforcement of the guarantee. Your dealer reserves the right to amend the term and conditions without prior notice. In case of any dispute, your dealer will reserve the right of final decision.

Bath Mixer

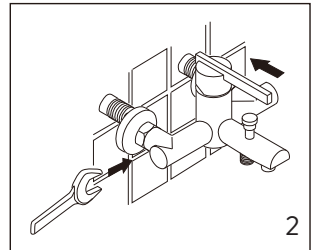
Installation Method:

Caution Before installation, clean out dirt or other impurities, which may collect in water pipes by allowing water to flow freely for a moment.

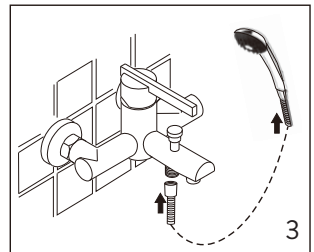
1. Install the two offset connectors into the hot and cold supply pipes.



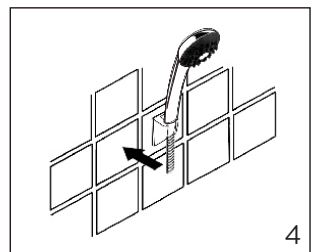
2. Thread the escutcheon onto the offset connectors so that the escutcheon contacts the finished wall. Insert washer into mixer body, supply nuts. Thread the supply nuts onto the connectors and tighten them.



3. Washer provided with hose must be installed in each end. Connect shower hose to mixer and hand shower.

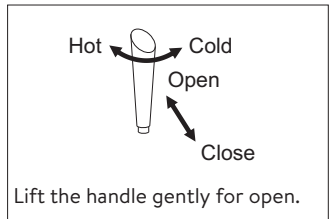
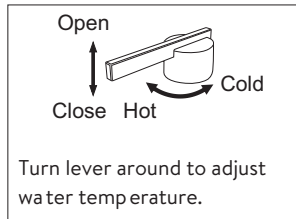
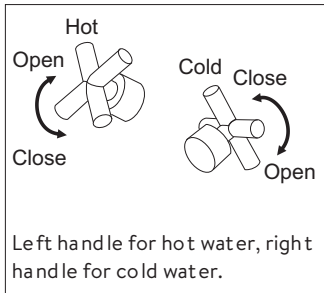


4. Drill two holes in the finished wall and then tighten screws to secure bracket on the finished wall.



Instruction

Handle Operation:



Cleaning Method

In order to maintain the shine finish of your mixer, please always clean the mixer periodically.

- Clean the finish with warm water and dry with a clean soft cloth.
- Many cleaners may contain chemicals, which could adversely affect the finish and are not recommended for cleaning.
- Do not use abrasive cleaners, solvents, sponges and tissues for cleaning.

Terms & Conditions

On the mixer you purchased you have a 5 years guarantee on the ceramic disk from the date of purchase. The guarantee does not cover:

1. Incorrect or inappropriate use of the mixer.
2. Incorrect installation or carried out with inappropriate tools.
3. Inappropriate maintenance or inappropriate use of cleaning products.
4. Components subject to ordinary wear and tear
5. Damages due to calcareous sediments or plaster flakes in the pipes.
6. Damages due to the use of spare parts other than the original ones.
7. Causes due to chemical, electrochemical, electrical influences.

Customer must present the sales invoice and this instruction guide in order to enjoy our guarantee service. Please keep your sales invoice and instruction guide safely.

Your dealer will apply for the enforcement of the guarantee. Your dealer reserves the right to amend the term and conditions without prior notice. In case of any dispute, your dealer will reserve the right of final decision.

