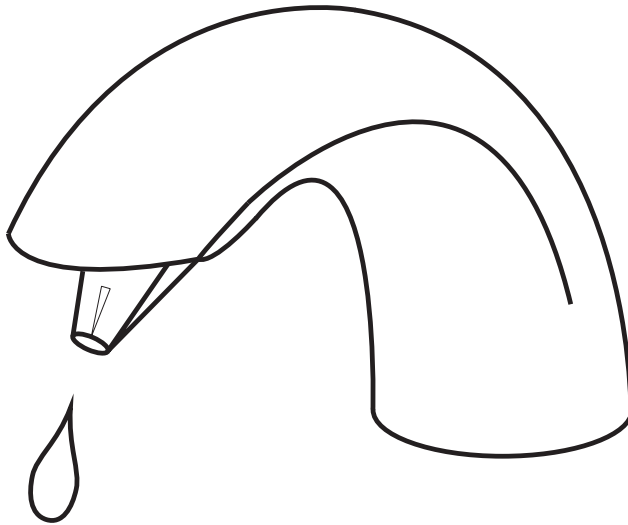


AQUAECO

WASHROOM AND PLUMBING SOLUTIONS

Installation Guide



AQE-ECO-252-252T-XX

AQUAECO DECK MOUNTED & DECK MOUNTED TALL
TOUCHLESS LIQUID SOAP DISPENSER

A member of **SANIPEXGROUP**
www.sanipexgroup.com

IMPORTANT PLEASE READ

All products manufactured and supplied by AQUAECO are fit for purpose as long as they are Installed, used correctly, cleaned and receive regular maintenance in accordance with these instructions...

Remove all packaging and check the product for damage or missing parts before commencing with the installation.

Any alterations made to this product and its components may infringe product certification, infringe water regulations and invalidate the guarantee. The Installation must comply with all local/national water supply authority regulations/bylaws and building and plumbing regulations, therefore we strongly recommend that your product be installed by a reputable qualified trade's person.

PRODUCT LIFECYCLE

"The product LiveCyclele is the collective stages that a product goes through from its conception and design through to its ultimate disposal."

DISPOSAL GUIDANCE

The best way to ensure your Product has a long life is to follow the Care and Maintenance guides set by the Manufacture after purchase. This document can be found at www.sanipexgroup.com.

The life cycle of the product is not in correlation to the product Guarantee; the standards the products are manufactured or certified to (e.g. CE & WRAS) can exceed past the Guarantee duration. After the life cycle of the product is deemed complete by the end-user please follow the below to dispose of the items correctly...

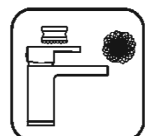
CLEANING CARE GUIDE

Only use a mild soap and water for cleaning.
Rinse with water to remove the mild soap solution.
We recommend the product is dried using a soft cloth after every use.

Never use any abrasive or strong cleaning products containing, bleaches, acids (hydrochloric, formic, phosphorus, chlorine or acetic), strong detergents, limescale remover, alcohol or dyes etc.

Never use abrasive cleaning pads, wire wool or microfibre cloths.
Never use cleaning equipment that may have been pre-used and contaminated with the above substances.

Never apply the cleaning product directly onto the finished surface.



Contents

Warnings	1
Specifications	1
Before usage	2
Name of spare parts	2-3
Installation position of dispenser	4
Installation of spout (for soap)	5
Installation of controller (host)	6
Connection of spare parts	7
Method of refill or replace soap	7
Testing and usage	8
Care and cleaning	8-9
Periodic maintenance	9
Long-term suspension of usage	9

Warnings

For the safety and smooth operation, please pay attention on the following warnings.

- Please DON'T disassemble, repair or refit the products, because it might lead to electricity shock or product breakdown, unless stated otherwise.
- Please DON'T install the products in humid place, especially in bathroom or Sauna room.
- Please DON'T strike the products, as this may damage the unit or cause soap leakage.
- Please DON'T use the product in the place where freezing might be occurred.
- Please ensure that the power line separates from hot water line/tube
- Please keep the detecting scope clear to avoid interference.
- The designated soap liquid is strongly recommended to be used.
- Please install the power socket/outlet in the place where water cannot be reached or sprayed.

Specifications

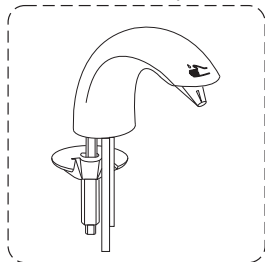
Power supply	AC	DC
	AC 100~240V	4*1.5V Alkaline batteries
Sensor detection range	5~150mm	
Ambient temperature	1~40°C	
Humidity	Max.90RH	
Soap volume	0~1.5ml (adjustable)	
Applicable soap viscosity	100~3800 cPs	
Bottle volume	1000ml	

Before usage

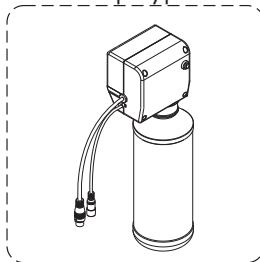
1. Please read this instruction manual carefully and fix the products correctly.
2. We reserve the rights to upgrade products without a notice.
3. Please check whether the following spare parts completed or not.

Name of spare parts

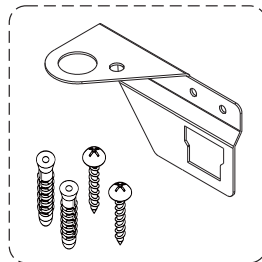
Spout for soap-type
(Various styles)



Controller/host for
soap-type

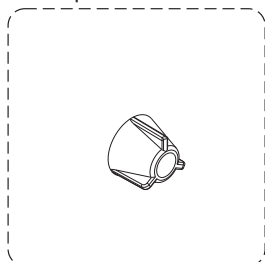


S.S bracket

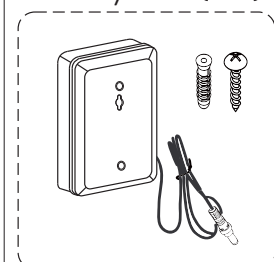


Spare parts of power supply

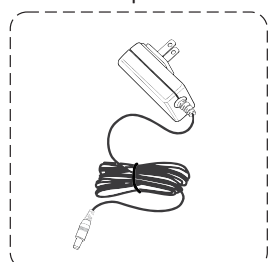
Spare toolkit



Battery Case (DC)



AC Adapter (AC)

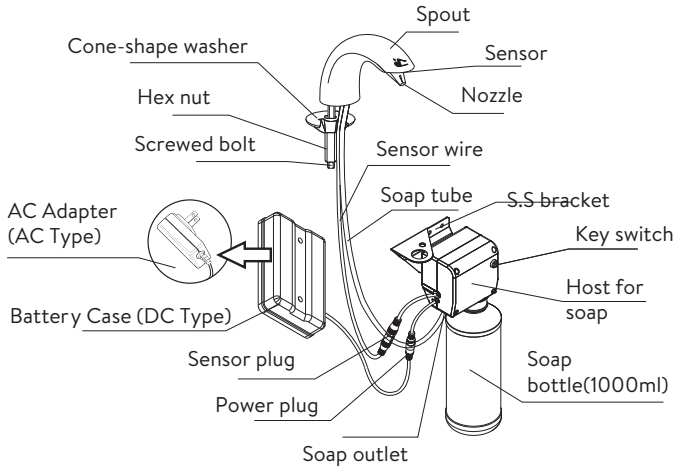


Note :

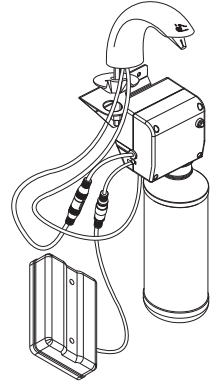
1. For the purchased spout, please take the real product as final, the above photo is for reference only.
2. As to the spare parts of power supply, please refer to the type of your purchased products.

Soap dispenser (counter-top type)

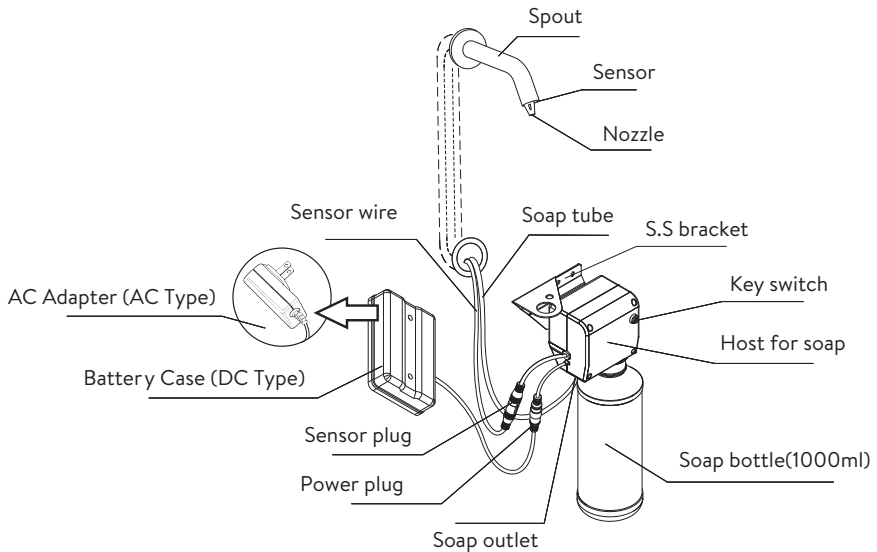
Wall-mounted host



Spout-mounted host



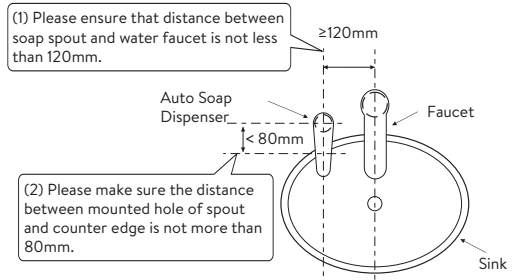
Wall-mounted foam soap dispenser



Installation position of the dispenser

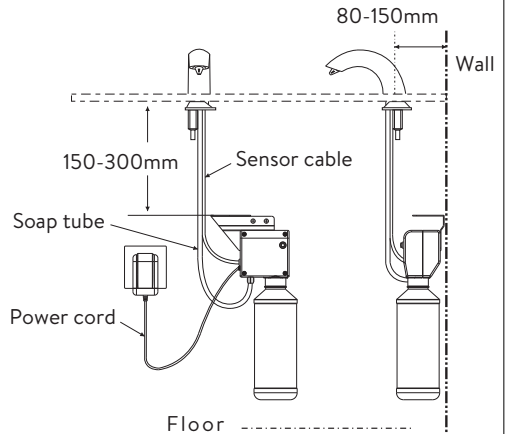
Position of spout

1. Please ensure that distance between soap spout and water faucet is not less than 120mm to avoid accidental activation.
2. Please make sure the distance between mounted hole of spout and counter edge is not more than 80mm so that the soap can be dispensed in right place inside of water sink/ counter.



Position of host of soap dispenser

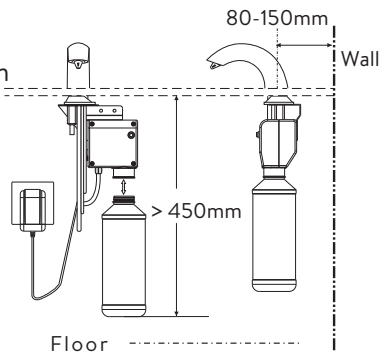
1. Please make sure that the length of soap tube, air tube and sensor cable are sufficient to connect with host/control box of the dispenser in the installation.
2. If the length of soap tube or air tube is too long, they can be cut for suitable length.



Standard parameter:

Length of soap tube and air tube both are: 1100mm
Length of sensor cable is: 1350mm
Length of power cable is: 1500mm

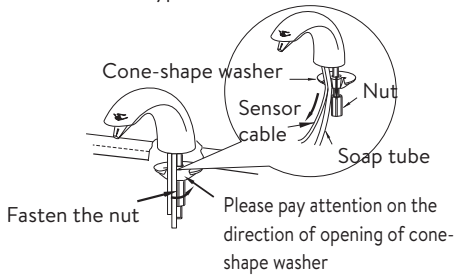
3. Please keep enough space for refilling soap or replacing soap bottle.



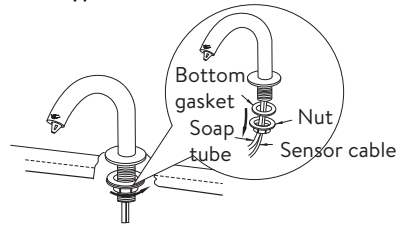
Installation of spout

Installation of spout (on counter top)

Type-1



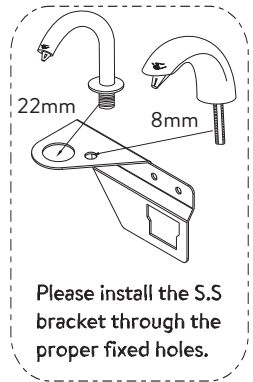
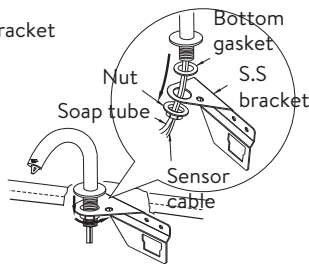
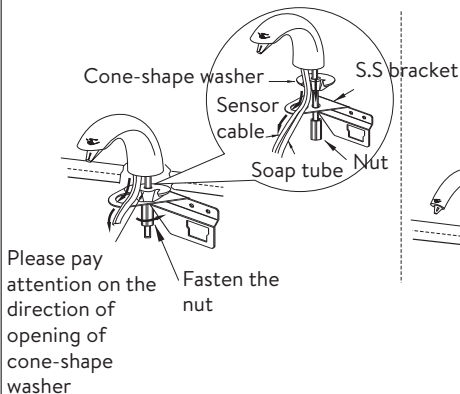
Type-2



1. Please remove the component from spout, put the connection cable of sensor and the soap tube through the pre-open hole of counter and then fix the components in turn.

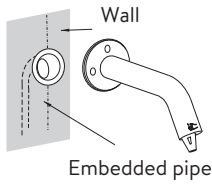
2. Please adjust the direction of spout and then fasten the nut.

Installation of spout (on counter top with S.S bracket)

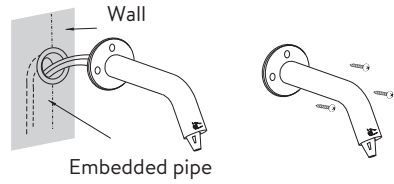
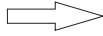


1. If installing the host under the spout, the S.S bracket installation is required once fix the spout.
2. Please remove the component from spout, put the connection cable of sensor and the soap tube through the pre-open hole of counter and then fix the components in turn.
3. Please put the S.S bracket through the corresponding hole according to the dimension of fixing bolt and adjust the direction of spout and S.S bracket, then fasten the nut.

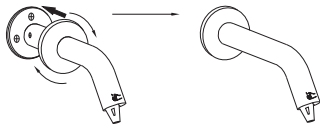
Installation of spout (wall-mounted)



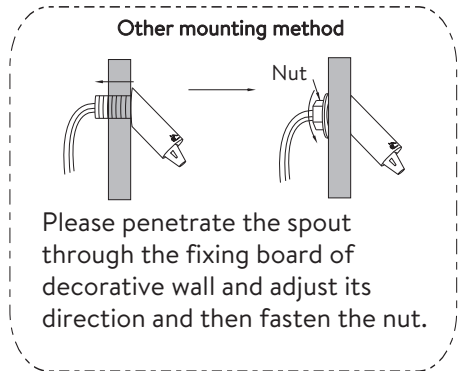
1. Please locate and mark the mounting location of screws on the wall where embedded the pipe and then drill appropriate holes and fix the components.



2. Please insert the sensor cable and the soap tube into embedded PC pipe and lead them out from the bottom of reserved holes and then mount the spout onto wall (please use the expand-screws in mounting, if needed).



3. Please tighten the decorative cover on the spout.



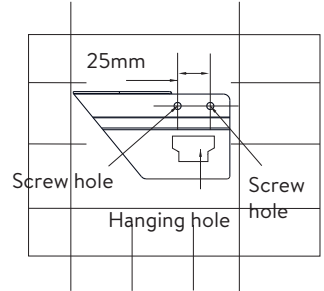
Installation of host of soap dispenser

1. Please locate & mark the proposed location of the host and S.S bracket.

2. Please drill the proposed holes for S.S bracket.

Depth of hole: 25mm.

Diameter of hole: 3mm (without rubber stopper) 7mm (with rubber stopper)

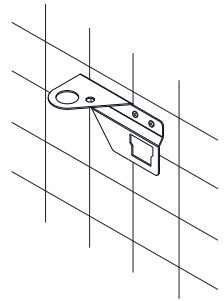


Note:

Keep the S.S bracket in horizontal.

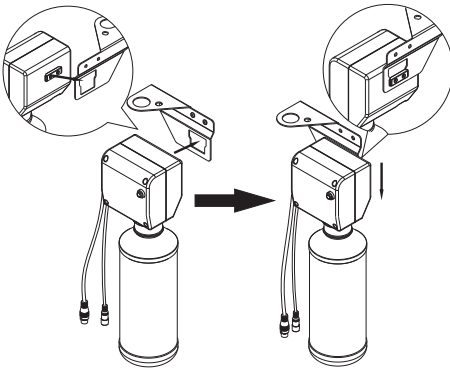
3. Please fix S.S bracket by self-tapping screws on the proposed location on wall (the screw stopper can be used with self-tapping screws if needed).

4. Please put the host on S.S bracket (insert the hanging bracket that is in the back of host into the hanging hole of S.S bracket).

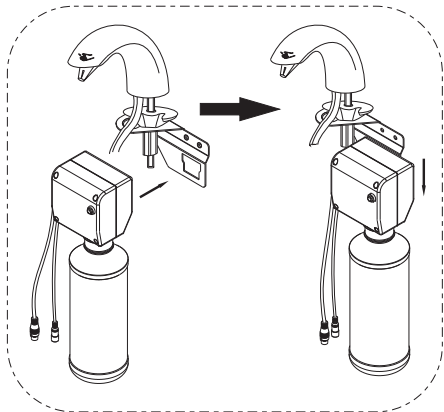


Wall-mounted S.S bracket

Hanging-type S.S bracket



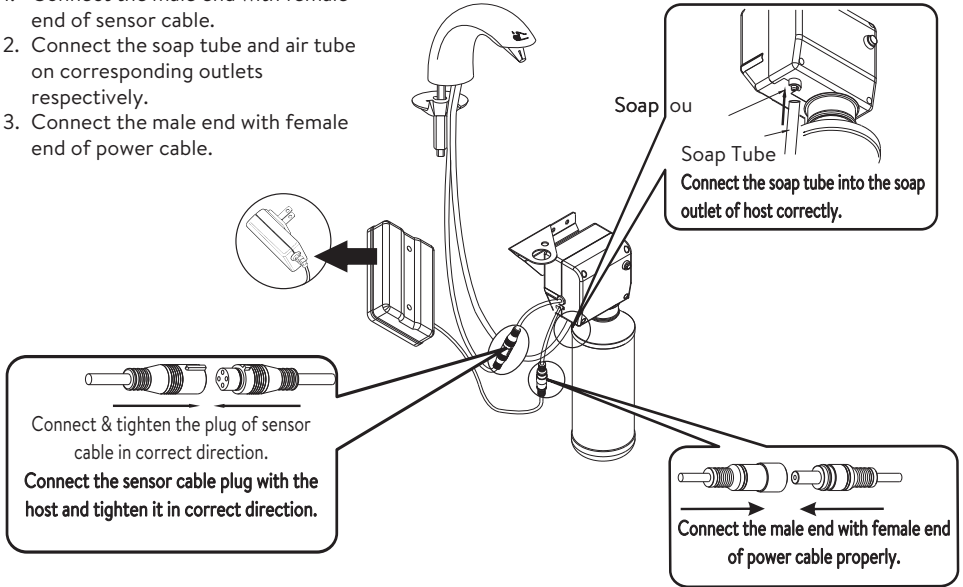
Put the host on S.S bracket.



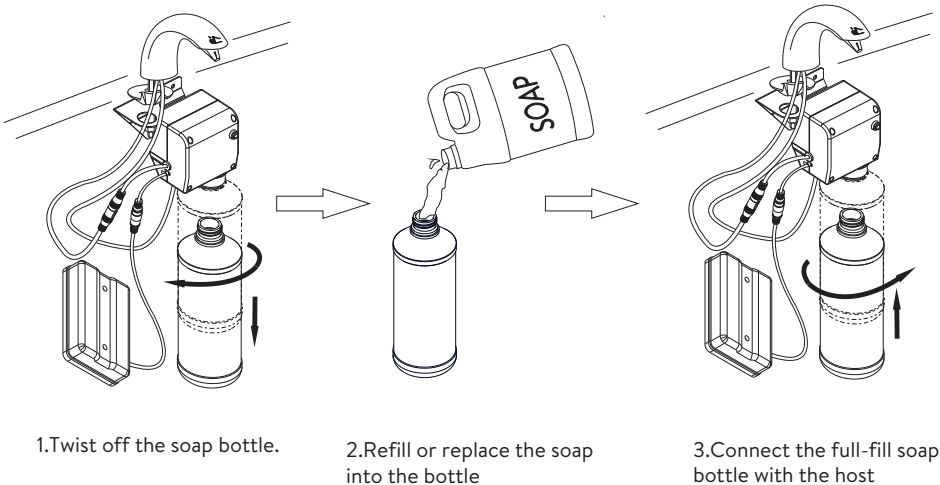
Fix the host on S.S bracket (the installation of hanging-type S.S bracket, please refer to the instruction of installation of spout (soap dispenser) on page 5) .

Connection of spare parts

1. Connect the male end with female end of sensor cable.
2. Connect the soap tube and air tube on corresponding outlets respectively.
3. Connect the male end with female end of power cable.



Refill or replace soap



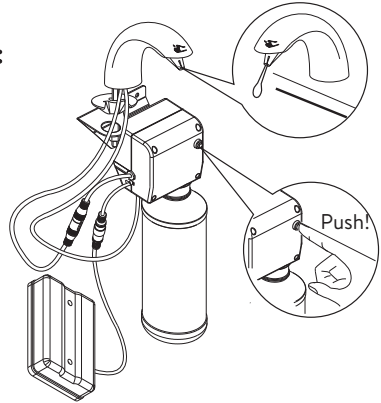
Testing and using

After completion of installation, please test the product according to the following instructions:

1. Connect with power after filling the soap into the bottle.
2. Press the key switch until foam spitting from the nozzle.
3. Put your hands under spout in appropriate distance and wait for fixed amount of soap.

Note:

please make sure there is no leakage on connection point of soap tube.



1. Put your hand under the nozzle of spout



2. Soap comes from nozzle.



Caution: please do not put your hands too close to the nozzle to avoid soap splashing and prevent failure of the unit.

Care & cleaning

• For light cleaning

Please use the soft cloth soaked with water and drying it and then to wipe off the stain affixed on spout & sensor cabinet.

• For heavy- dirt cleaning

Please use the cloth soaked with right amount of neutral detergent to wipe off the stain and then clean by water.

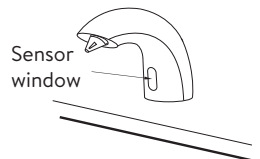
Please be careful during cleaning surrounding of sensor cabinet to avoid the scratching.

Please do not use the detergent which might do harm to the spout such as acid detergent, chlorine decolorizer & alkali detergent.

The following items are prohibited to adopt for cleaning the product.

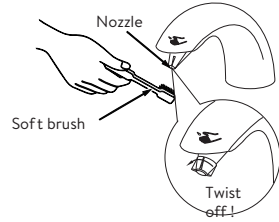
The detergents contained abrasive grain, such as polishing powder. Solvents such as paint and the solvent covered benzene.

Abrasive tools such as nylon brush/steel wool, etc.



- **Cleaning the nozzle**

Please use the soft brush to clean the nozzle. Please open the nozzle by the Allen Wrench if the nozzle is blocked.

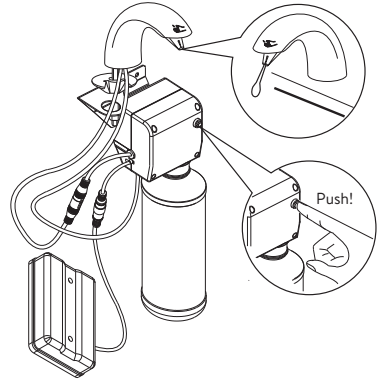


- **Cleaning of soap bottle**

Please clean the soap bottle by clear water.

- **Cleaning of host system**

If there is block or back-flow occurs on the host, please wash the soap bottle completely and then refill the clear water into the bottle, then press the key switch to clean the host.



Periodic maintenance

- **Monthly maintenance:**

Please check all the connection points whether there is soap leakage.

- **Biannual maintenance:**

Please check all the connection points and fasten them accordingly and properly if needed.

Long-term suspension of usage

Please follow the below methods to undertake the cleaning if the dispenser is under long-term suspension of usage.

1. Please pull out all the soap and clean the soap bottle by clear water.
2. Please refill the soap bottle with clear water and complete the connection to the host.
3. Please press the key switch until the soap contained in soap tube is pumped out completely.
4. Please clean the soap bottle thoroughly and make it dry and then fix it onto the host, meanwhile, cut off the power (take the cell batteries out, if the power is DC type) .

AQUAECO

WASHROOM AND PLUMBING SOLUTIONS

A member of SANIPEXGROUP

www.sanipexgroup.com