

AQUAZONE

QUALITY PLUMBING SOLUTIONS

Installation Guide



AQE-ECO-512S-CP

EMBASSY EXPOSED SQUARE SHOWER COLUMN SET

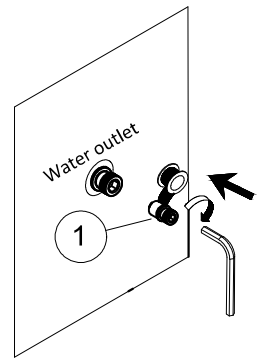
A member of  SANIPEXGROUP

Installation Caution

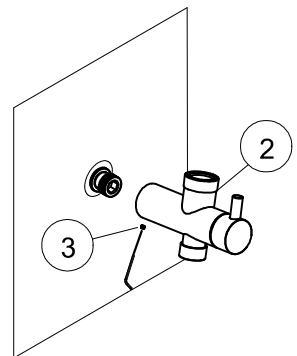
1. Before installing the TAP, be sure to remove impurities and sludge from the ground water pipe to avoid blocking the tap and affecting the outlet.
2. Please check if there is any damage in the water supply pipe. If necessary, please replace it.

Instal the water separator

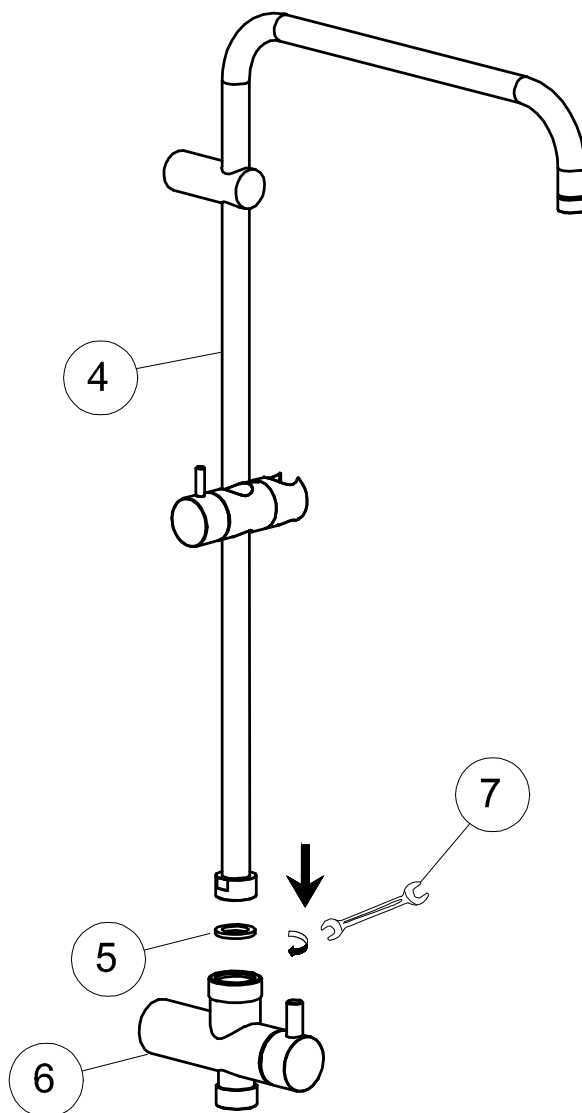
1. Before installing the water separator, install the G1/2 connector (1), connect the thread to the wall with a water belt, and then tighten it with an inner hexagon wrench.



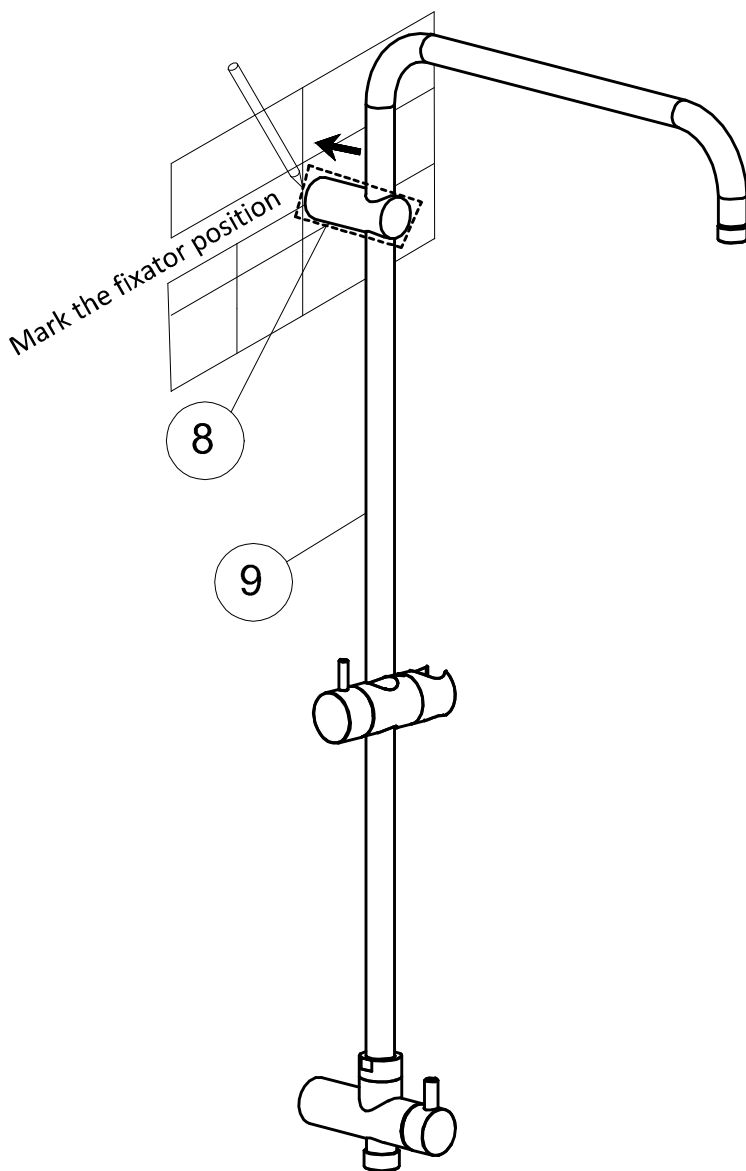
2. Insert the intake joint into the water separator (2), keep the top and bottom joint of the water separator vertically parallel, lock the top screw (3) with the hexagon wrench and tighten it.



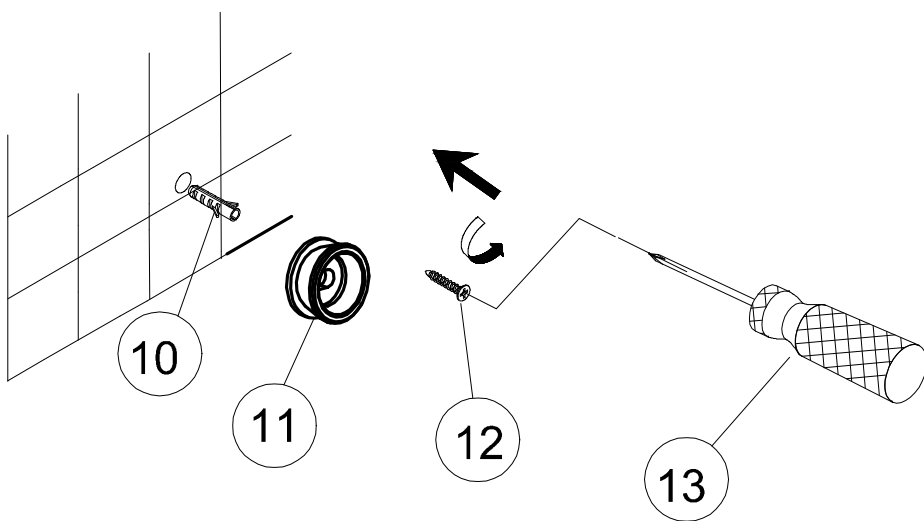
1. Installation shower pipe



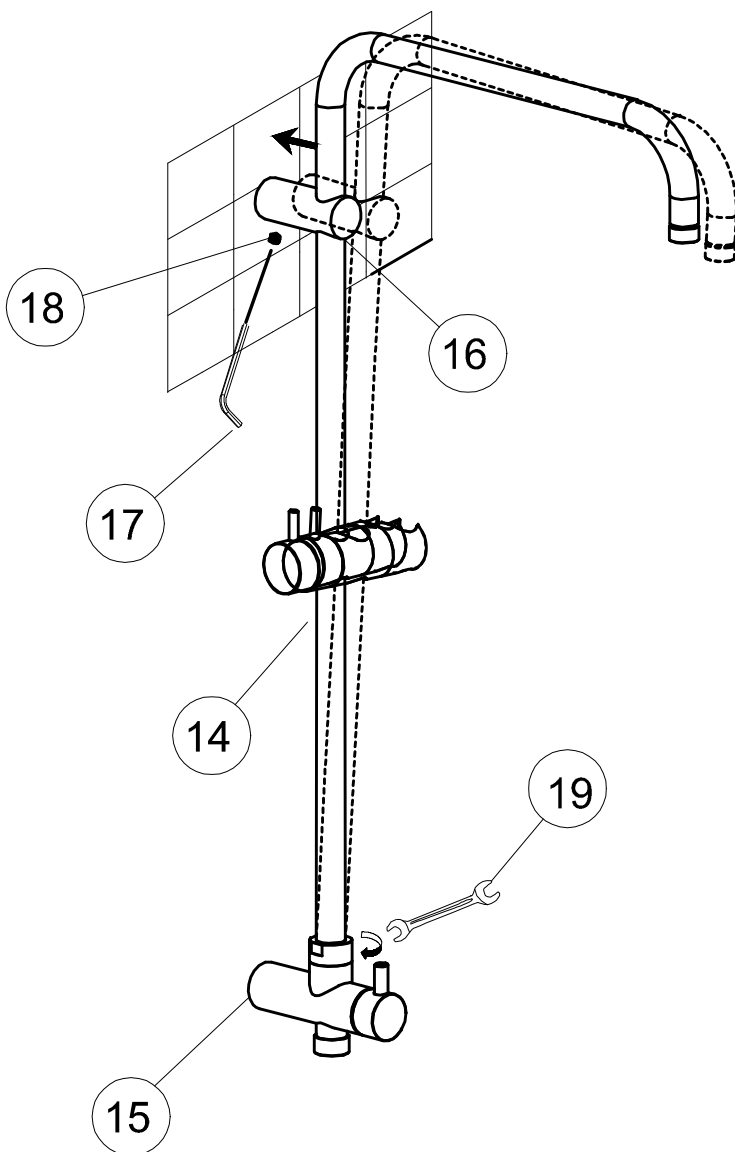
1. The G3/4" joint of the water inlet end of the shower pipe (4) is fitted with a sealing gasket (5) and inserted directly into the water separator (6), and is fixed by a wrench (7)



2. Position the shower tube (9) fixing seat assembly (8) close to the wall, mark the fixing seat diameter with a pencil, and remove the shower tube.



3. The expansion sleeve (10) is inserted into the hole according to the position of the hole of the fixing seat (11) drawn by a pencil, the fixing seat is installed on the wall with a self-tapping screw (12), and the screw is tightened with a screwdriver (13).

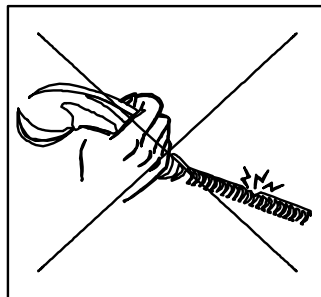
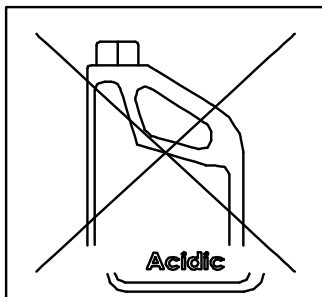
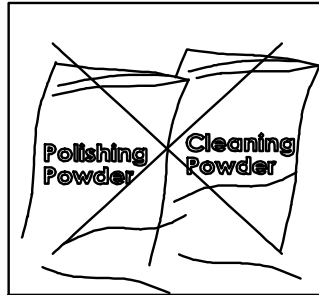
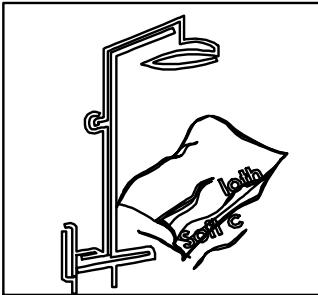


4. After the wall seat is installed, the shower tube (14) is reinserted back into the water separator (15), and then the fixed seat (16) is sheathed into the fixed wall seat mounted on the wall in the reverse direction of the arrow head, and the top screw (18) is tightened with a hexagon wrench (17), finally, use a wrench (19) to tighten the connection between the pipe and the water separator.

2. Clean and maintain

Please clean the faucet frequently or regularly to keep it clean and bright.

1. Please clean the shower tube frequently or regularly and keep the shower tube and water separator clean and bright.
2. Rinse with clean water and dry the water separator with a soft cotton cloth. Do not use any scrub cleaner, scrub cloth or paper towels.
3. Do not use any acidic cleanser, polisher or harsh cleanser or soap.
4. The operating environment temperature must be above 0°C, otherwise, the TAP will deform, frost and crack, etc.



AQUAZONE

QUALITY PLUMBING SOLUTIONS

Oakwell Way, Birstall
Leeds, England WF9 17LU

A member of  SANIPEXGROUP