

AQUAZONE

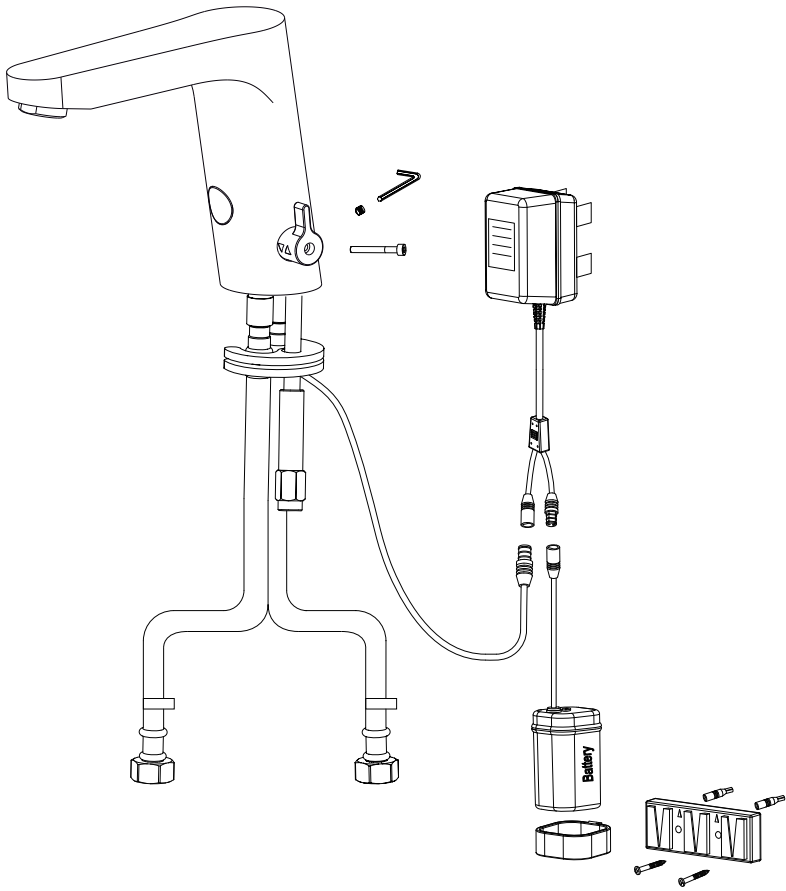
QUALITY PLUMBING SOLUTIONS

Installation Guide



AQE-ECO-1321-CP
AQUAECO MONO TOUCHLESS BASIN MIXER

FUNCTIONS AND FEATURES

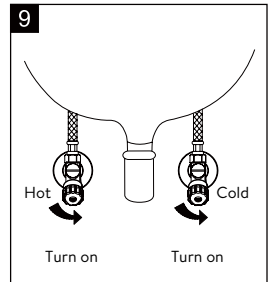
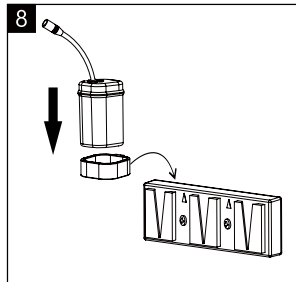
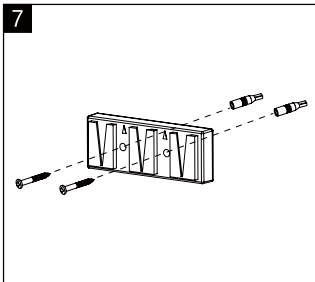
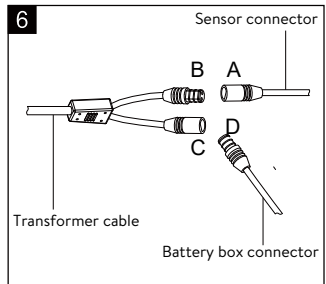
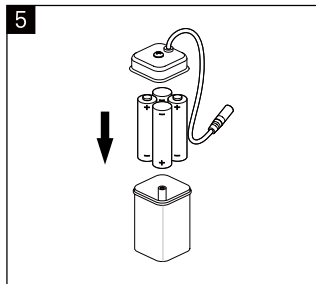
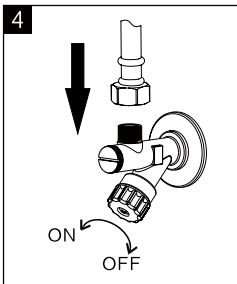
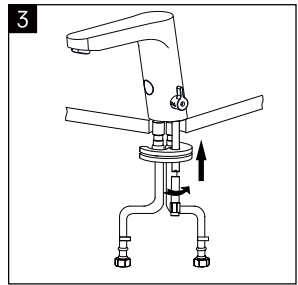
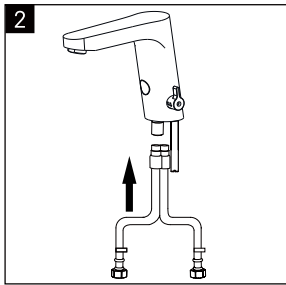
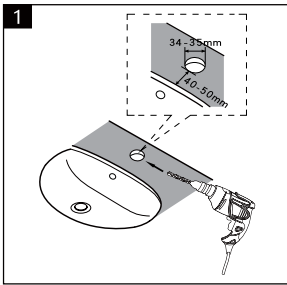


- Hands free infrared sensor activated.
- Automatic shut-off water saving flow control.
- Improves water and energy efficiency.
- Easy to use-ideal for disabled or elderly.
- Hygienic-reduces risk of cross contamination.
- Mains and battery powered options included.
- Vandal resistant.
- Easy to fit in new installations or retrofits.
- User friendly and simple installation.
- Self-setting appropriate sensor field within 30 seconds when wired in.
- Water temperature adjustment.

TECHNICAL SPECIFICATION

Model no.	AQE-ECO-1321-CP
Power input	DC:6V (4x1.5V AA Alkaline battery) AC:220-240V (50/60Hz)
Detection zone	10-35cm (To white board)
Water pressure	0.5 - 7 bar
Power consumption	Electricity: AC:<5w; Battery: DC:<0.5mw
Inlet diameter	G1/2
Confirmation time	<1 Second
Water temperature	1°C - 50°C

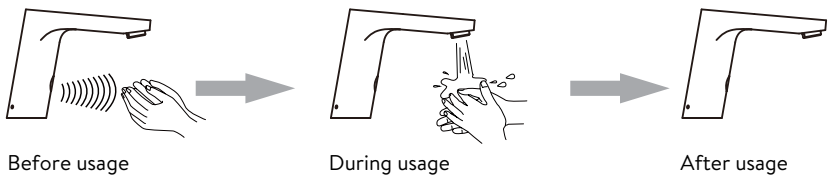
INSTALLATION



After the above whole installation, disconnect the sensor from the power (A-B) for 30 seconds; Reconnect it until the sensor light is glistening; Then put the hand at the position what you need (in front of sensor) until the light stops glistening; The sensor has set a proper distance and wash your hands.

During the future usage, if find the sensor distance too short/long, please reset the distance as above operation.

USING METHOD



Note: When your hand enters the sensor the water flows, remove your hand from the field and it will stop automatically after flushing 30 seconds continuously, To flush again, leave your hand in the sensor field for 3 seconds.

MAINTENANCE

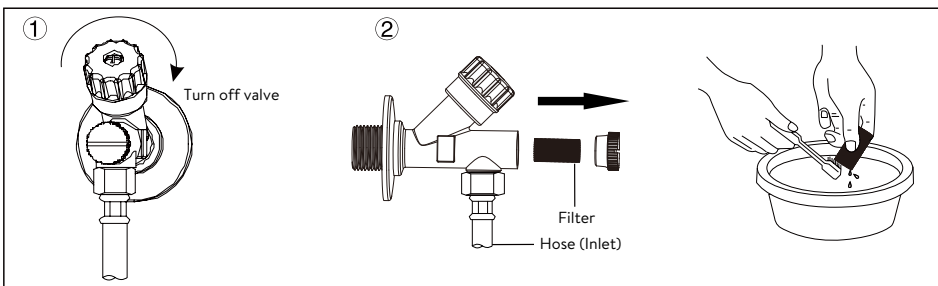
Our products are finished to the highest standard and due care needs to be taken to ensure their looks are retained. We recommend cleaning all products with soft damp cloth **ONLY** and advise strongly against the use **ALL** cleaning products i.e. powders and liquids.

Please ensure the filter is cleaned every 6 months or if the water flow is reduced.

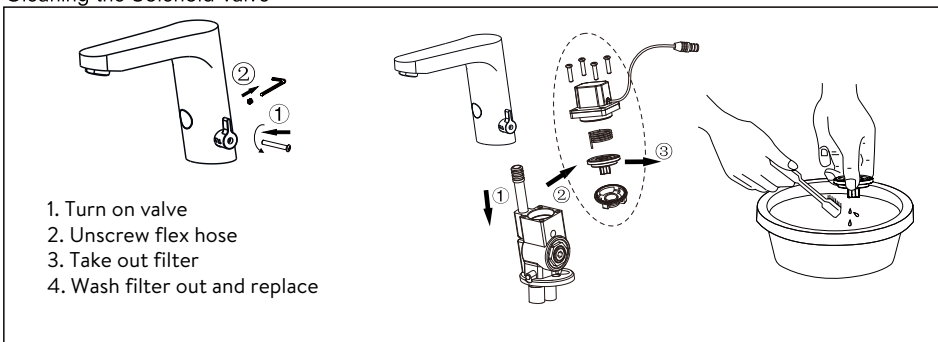
Don't use corrosive detergent.



Clean filter



Cleaning the Solenoid Valve



TROUBLE SHOOTING

Description	Cause	Treatment
No Water out	The battery is exhausted	Change the battery
	Water supply cut off	Check supply
	Dirt in the filter	Clean the filter
	Water pressure is too low	Raise the pressure
Water will not turn off	Dirt on the sensor window	Clean the sensor
Too little water flow	Water supply is turned down	Adjust water supply
	The filter is too dirty	Clean the filter
	Water pressure is too low	Raise the pressure
Too much water flow	Water pressure is too high	Adjust pressure
Short cycles of battery	Incorrect batteries	Change to 4AA Alkaline batteries
The indicator light is not on	The light is broken	Change the light or circuit board
	The circuit board is wet or signal line is wet	Dry out
	The battery is exhausted	Change the battery
	Poor connection of battery	Change battery connections

AQUAZONE

QUALITY PLUMBING SOLUTIONS

Oakwell Way, Birstall
Leeds, England WF9 17LU

A member of  SANIPEXGROUP