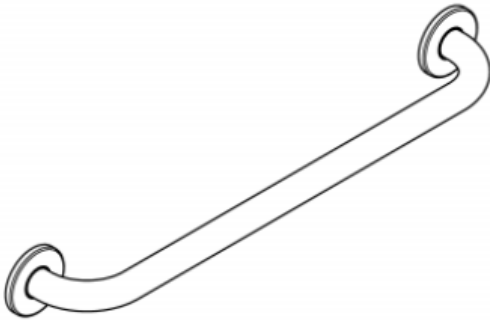


AQUAZONE

QUALITY PLUMBING SOLUTIONS

General Installation Guide



MEDICAL

grab-bars – swing-up bar - shower seats –
DOC M pack layout

A member of  SANIPEXGROUP

Please leave these instructions with the customer

IMPORTANT PLEASE READ

Remove all packaging and check the product for missing parts or damage before starting installation.

Any alterations made to this product and fittings may infringe water regulations and invalidate the guarantee.

The Installation must comply with all Local/National Water Supply Authority Regulations/Byelaws and Building and Plumbing Regulations.

We strongly recommend that your product be installed by a reputable qualified trade's person.

General Installation:

To the Installer, please read and follow this instruction carefully, as the guarantee is only valid if the product is installed as directed.

Don't rush, read the instructions first and run through them before you begin. Keep fittings together to avoid loss. Do not over tighten screws or bolts.

If the product is covered with polyethylene protective film, do not remove until installation is complete to grant maximum protection. However, remove film where any two surfaces will be in permanent contact.

Please leave this installation manual with the end user once the product has been installed.

Fixing:

It is essential that fixing instructions be followed, as the security of all items is vitally important. Walls onto which fittings are to be mounted must be suitable for the intended use of the applicable product. Appropriate fixings should be used which are suitable for the material of the fixing wall.

Product Aftercare:

We recommend cleaning with a soft damp cloth and mild soap solution.

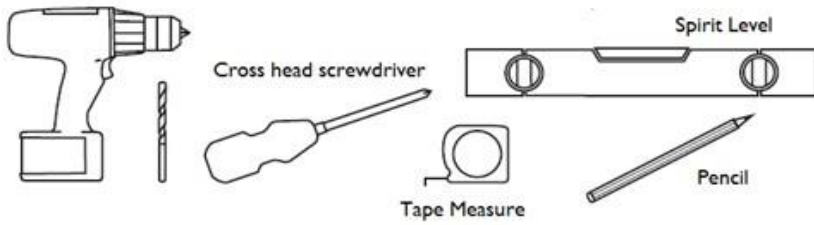
Do not use cream cleaners or cleaners containing bleach.

Do not scrub or scour.

Do not use abrasive cleaning agents.

Do not use solvent based cleaners.

Tools Required (Not supplied)

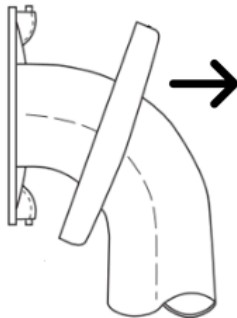


Drill and drill bits

Required when securing the components to a wall. Use an appropriate size bit to match the wall fixing chosen (wall screws and fixings not supplied).

Ensure that the wall construction and fixings for the hinged support rails and grab rails are capable of resisting the horizontal and vertical loads exerted on them by the users.

Grab Bars



Remove the snap flange from the grab bar by pulling it forward...

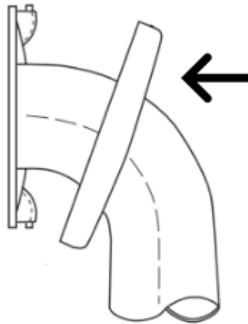
Check local building codes for mounting heights to make sure installation complies with local building code requirements.



Check alignment and mark the screw holes

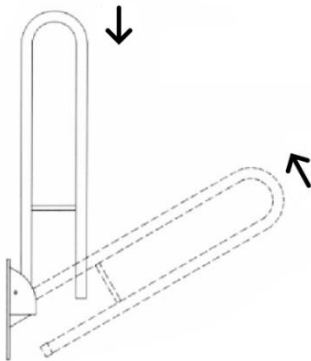
Drill and plug the wall, using appropriate fixings (not supplied) for the wall structure. For specialist fixing advice contact Fisher Fixings to ensure that the correct fixings are used or check the Mounting recommendations on Page as a guide...

Secure the Rail into position.



Reposition the flange cover to conceal fixing screws.

Hinged Arm Support Rail



Offer the hinged arm to the wall at the correct height and location. Once sure of its position mark the fixing holes. Remove arm and drill and plug holes with appropriate fixings (not supplied) for the wall structure. For specialist fixing advice contact Fisher Fixings to ensure that the correct fixings are used or check the Mounting recommendations on Page as a guide...

Secure hinged arm to the wall.

How to raise the hinged support rail

When not in use, the Hinged Support Rail is raised, leaving the facility clear for other users.

How to lower the hinged support rail

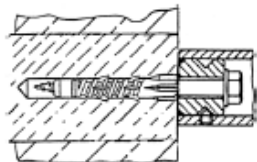
To lower the unit from its upward/raised position, the Hinged Support Arm needs to be gently lifted from its locked status and then gently lowered into its horizontal position ready for use.

Components are no stronger than the anchors/fixings or walls to which they are attached. They must be securely mounted to sustain the required load stated by the local building code

Mounting recommendation - Grab rails

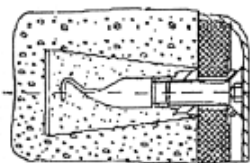
Wall

Mounting Instruction



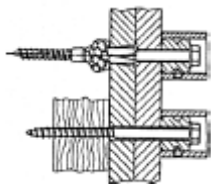
Concrete B 25
Solid brick MZ 20
Ventilated brick

Wood screw and dowel $\varnothing 10$
Dowel S 12 and wood screw 10 x 80



Gas concrete $\geq G2/V2$

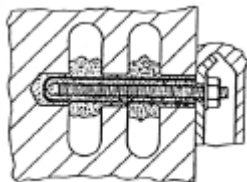
Injector bolt: eg.: 3 FI M10 + 3 flat head screws M 10 x 35; DIN 7991



Gypsum plaster board
Chip board
Wood

Special dowels
hollow dowels
Dowels FU

When working with smooth bases use supporting rings for a better load distribution.



Ventilated brick $\geq Hbl2$

Injector bolt eg.: 3 FI M10 + 3 flat head screws M 10 x 35; DIN 7991

Please always notice the instructions and regulations of the screw and dowel producers.

Mounting recommendation – Shower Seats – Swing Up bar

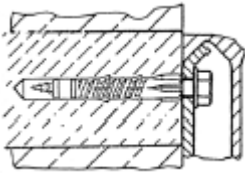
Wall

Mounting Instruction

Concrete B 25

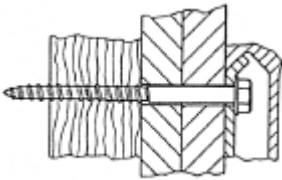
Screws and dowels for resistance of 3 Kn e.g.:

- S 10 with wood screws 8
- Heavy weight dowel SLM 8 N
- Heavy weight dowel HSL M 8/20



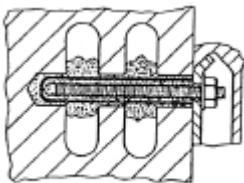
Gypsum plaster board
Chip board

Using a girder system
wood screws 7 / 8 mm



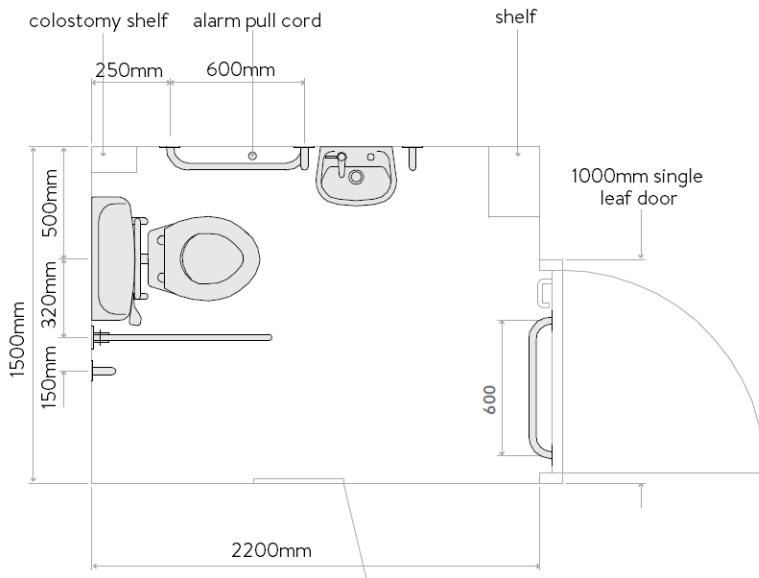
Concrete ^ B 25
Ventilated brick
Brick

Dowel systems resistance ^ 3 Kn
Injector bolt HVA M8

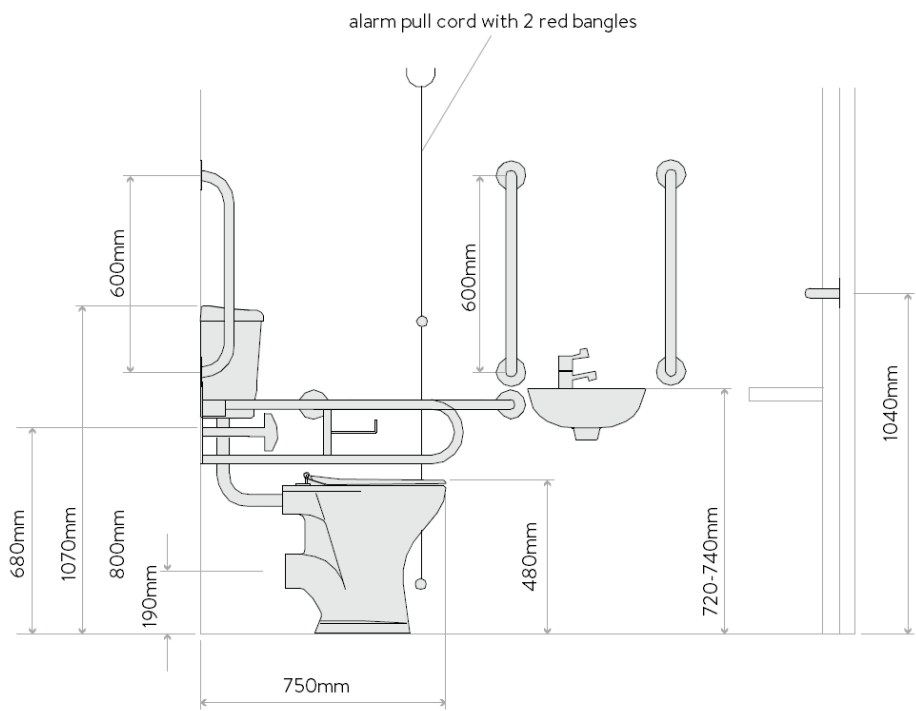


Please always notice the instructions and regulations of the screw and dowel producers.

DOC M low level WC Pack Layout:



mirror 400mm wide x 1000mm high fixed 600mm above floor



AQUAZONE

QUALITY PLUMBING SOLUTIONS

Oakwell Way, Birstall
Leeds, England WF9 17LU

A member of  SANIPEXGROUP