

# AQUAZONE

QUALITY PLUMBING SOLUTIONS

---

## Installation Guide



**AQE-MLI-I302-XX**

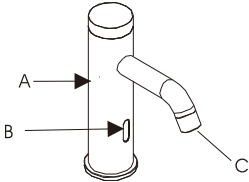
M-LINE INFRA-RED BASIN TAP

## TECHNICAL SPECIFICATION

Item No.	AQE-MLI-I302-CP
Description	Automatic Faucet
Power	DC:6V (4AA alkaline battery) AC:220V-240V;50/60HZ
Power Consumption	$\leq 0.3\text{MW}$
Sensing Distance	21-27CM
Water Pressure	0.5Bar-7Bar
Temperature	0.1°C -45°C
Dia.of inlet pipe	G(1/2)"
Dia.of outlet pipe	G(1/2)"

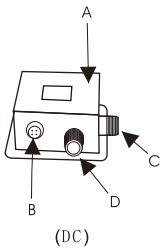
## PARTS NAME

### Faucet Body

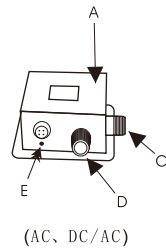


- A. Body
- B. Sensor Window
- C. Spout

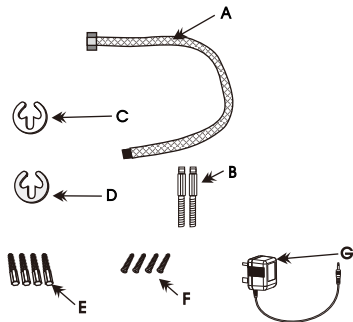
### Control Box



- A. Plastic Control Box
- B. Mainframe connector Socket
- C. Water Inlet (with Filter)
- D. Water Outlet
- E. Transformer Connector



### Part



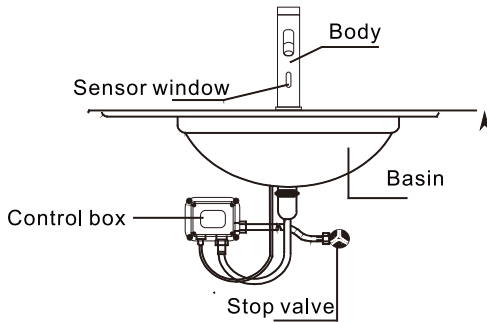
- A. Flexible Hose
- B. Fixing Bolt with Nut
- C. Rubber Horseshoe
- D. Brass Horseshoe
- E. Plastic Bulged Tube
- F. Screw
- G. Transformer

# INSTALLATION MAP

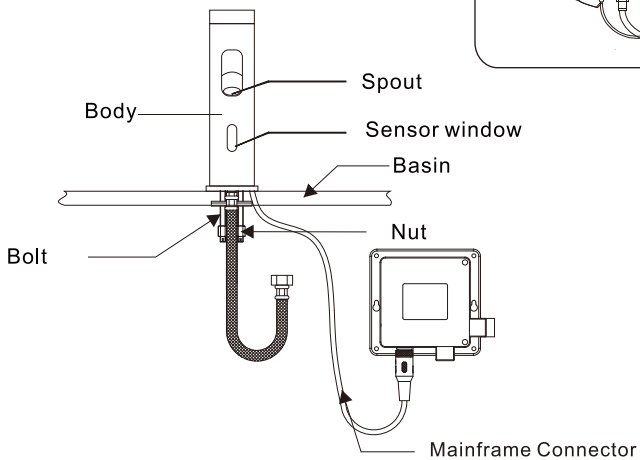
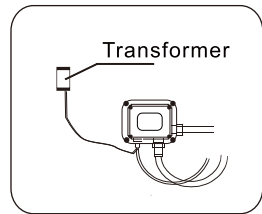
## Note:

Always flush pipework before installation.

The installation place which you choose and design should be sunless and lightless.

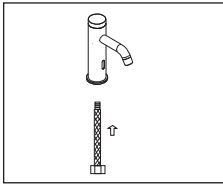


Installation for AC, AC/DC

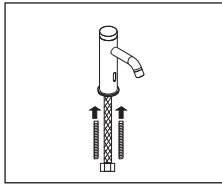


## INSTALLATION STEP

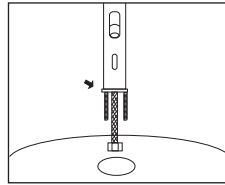
### Step :



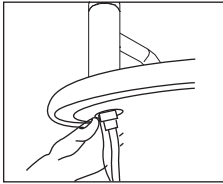
1



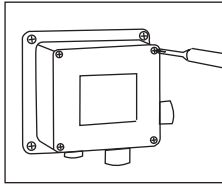
2



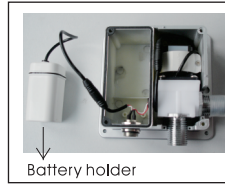
3



4

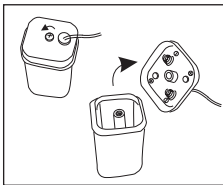


5

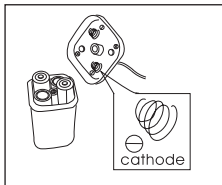


6

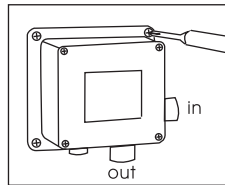
Battery holder



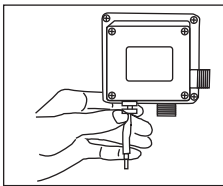
7



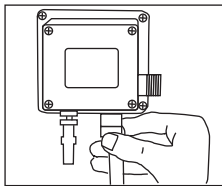
8



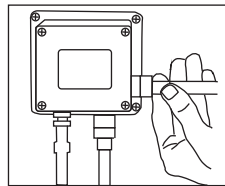
9



10



11



12

1. Unscrew the nut a little and take away rubber & brass horseshoes.
  2. Screw in flexible hose to faucet body.
  3. Place faucet on basin.
  4. Put in rubber & brass horseshoes and screw on nut tightly.
  5. 6. 7. 8.
- Take off screws and take out battery holder, then put in 4AA battery.
9. Fix control box close to faucet (ensure flexible hose will connect), using plugs and screws provided.
  10. Insert mainframe connector from faucet to mainframe connector socket, screw tightly.
  11. Connect flexible hose from faucet to control box (out).
  12. Connect control box (in) to water supply.  
(Water in pipe is provided by yourself)
  13. Connect transformer to control box and AC supply.
- Turn on water and test.

## MALFUNCTION & DISPOSAL

Description	Malfunction Cause	Treatment
no water out	the battery is exhausted(DC item)	change the battery
	water supply cut off	check supply
	dirt in the filter	clean the filter
	water pressure is too low	raise the pressure
water will not turn off	dirt on the sensor window	clear the dirt
too little water flow	water supply is turned too small	adjust water supply
	the filter is too dirty	clean the filter
	water pressure is too low	raise the pressure
too much water flow	water supply is turned too high	adjust supply
	water pressure is too high	adjust pressure
short cycles of battery	incorrect batteries	change to 4AA alkaline battery
the indicator light is not on	the light is broken	change the light or circuitry board
	the circuitry board is wet or signal line is wet	dry out
	the battery is exhausted	change the battery
	poor connection of battery	check the battery connection

## FEATURE & FUNCTION

Thank you for choosing our electronic automatic faucet.

- **WATER SAVING**

When your hands enter the sensing range ,the indicator light in the sensor window will shine ,then water flows out and stops immediately once you draw them back.

- **HYGIENIC**

Automatic on/off to free hands from any touching ,avoiding bacteria infection ,which is more convenient and hygienic.

- **INTELLIGENT**

Adopts the micro-computer controlling,the faucet can self-adjust the best detection zone and has the function of anti-light and anti-ultraviolet rays .

- **AUTOMATIC PROTECTION**

Automatically stops after 70 seconds to avoid water wasting.

If more water required,draw back your hands for 4 seconds , the water will flow out again.

- **POWER CUT AVAILABLE**

In the event of power failure,this product will automatically switch to battery power.

The automatic faucet is manufactured strictly by the ISO9001 standard. Our company has the right of updating the product technology.

# AQUAZONE

QUALITY PLUMBING SOLUTIONS

---

---

---

---

---

---

---

---

---

---

---

---

Oakwell Way, Birstall  
Leeds, England WF9 17LU

A member of  SANIPEXGROUP