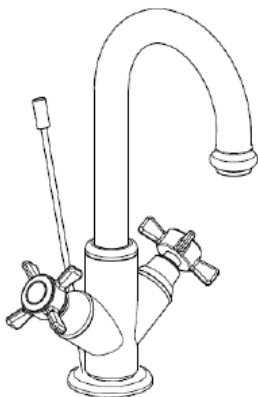


BAGNODESIGN

EXPERTLY CRAFTED BATHROOMS

General Installation Guide



BIARRITZ

mono basin/bidet mixers – 3-hole basin
mixer – 3-hole concealed basin mixer –
exposed bath/shower mixer – concealed
shower mixer/with diverter 2-hole bath
mixer – floor mounted bath mixer- 4-
hole deck mounted bath mixer -
concealed shut-off valve

A member of  SANIPEXGROUP

Please leave these instructions with the customer

IMPORTANT PLEASE READ

Remove all packaging and check the product for missing parts or damage before starting installation.

Any alterations made to this product and fittings may infringe water regulations and invalidate the guarantee.

The Installation must comply with all Local/National Water Supply Authority Regulations/Byelaws and Building and Plumbing Regulations.

We strongly recommend that your product be installed by a reputable qualified trade's person.

General Installation:

To the Installer, please read and follow this instruction carefully, as the guarantee is only valid if the product is installed as directed.

Don't rush, read the instructions first and run through them before you begin. Keep fittings together to avoid loss. Do not over tighten screws or bolts.

If the product is covered with polyethylene protective film, do not remove until installation is complete to grant maximum protection. However, remove film where any two surfaces will be in permanent contact.

Before making any inlet pipe connections, all supply pipes MUST be thoroughly flushed to remove debris.

The fitting of an in-line filter is recommended, Failure to do this could result in damage to the cartridge and components or low flow from the mixer.

The fitting of isolation/stop valves on the inlet feeds is advised for ease of maintenance.

Please leave this installation manual with the end user once the product has been installed.

Product Aftercare:

We recommend cleaning with a soft damp cloth and mild soap solution. Do not use cream cleaners or cleaners containing bleach.

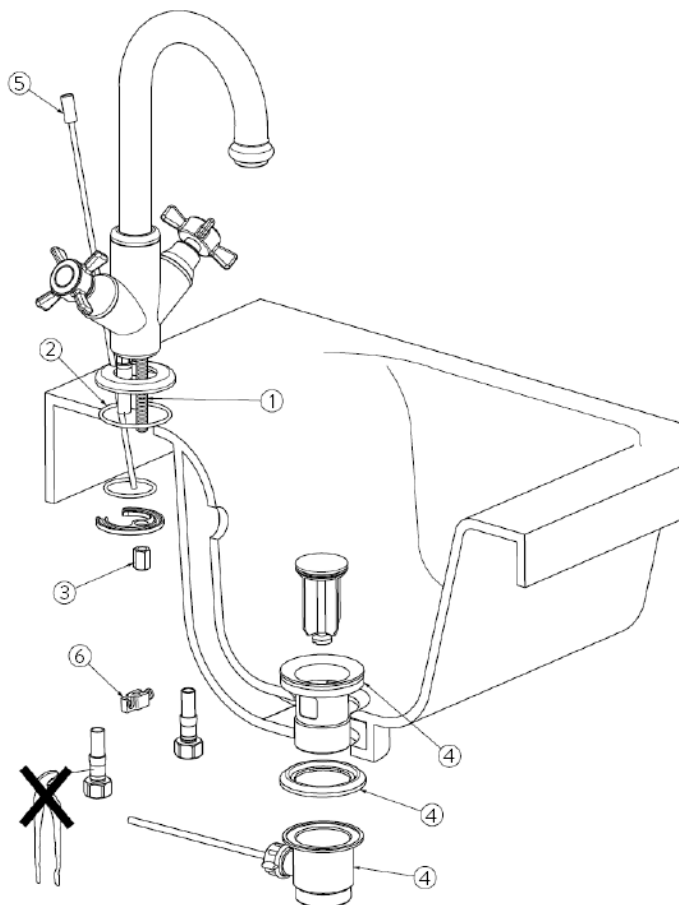
Do not scrub or scour.

Do not use abrasive cleaning agents.

Do not use solvent based cleaners.

This installation guide is for reference only. In case there is a discrepancy between that of the instructions and that of the actual product, the latter should be taken as standard. The rights of modification are reserved.

Mono Basin/Bidet Mixers



Assemble the parts as per the diagram.

Ensure that the mains water supply is turned off before installation.

Hand tighten the flexible hoses on the tap.

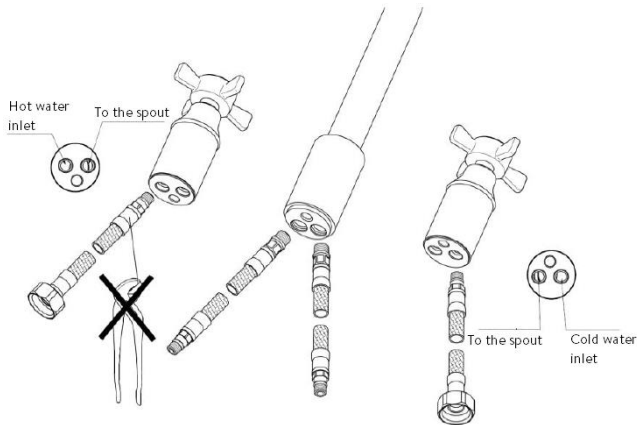
Hand tighten the threaded shaft (1) on the tap and insert the gasket (2) between the tap and the basin. Place the tap on the basin and fix it by tightening the nut (3) by an 11 mm wrench.

Mounting the pop-up waste (4), Insert the pop-up rod (5) in the opposite hole and connect it with the horizontal rod of the pop-up waste by the clamp (6).

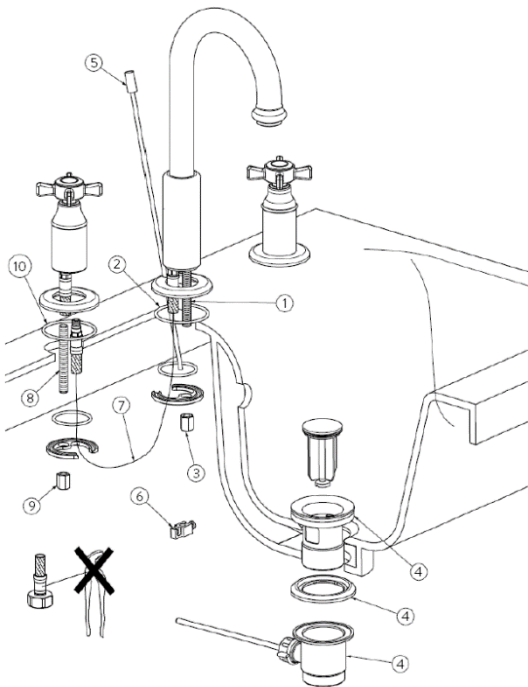
Connect the tap to the plumbing by tightening the flexible hose nuts by a 23 mm wrench (cold water right / hot water left).

*** Before making any inlet pipe connections, all supply pipes MUST be thoroughly flushed to remove debris. Failure to do this could result in damage to the cartridge and components or low flow from the mixer***

3 Hole Basin Mixer



Hand tighten the flexible hoses as shown in the picture.



Hand tighten the threaded shaft (1) on the spout and insert the gasket (2) between the spout and the basin.

Place the spout on the basin and fix it by tightening the nut (3) with an 11 mm wrench.

Hand tighten the threaded shaft (8) on the tap and insert the gasket (10) between the tap and the basin.

Place the tap on the basin.

Connect the tap to the spout by hand tightening the flexible hose (7).

Fix the tap on the basin by tightening the nut (9) with an 11 mm wrench.

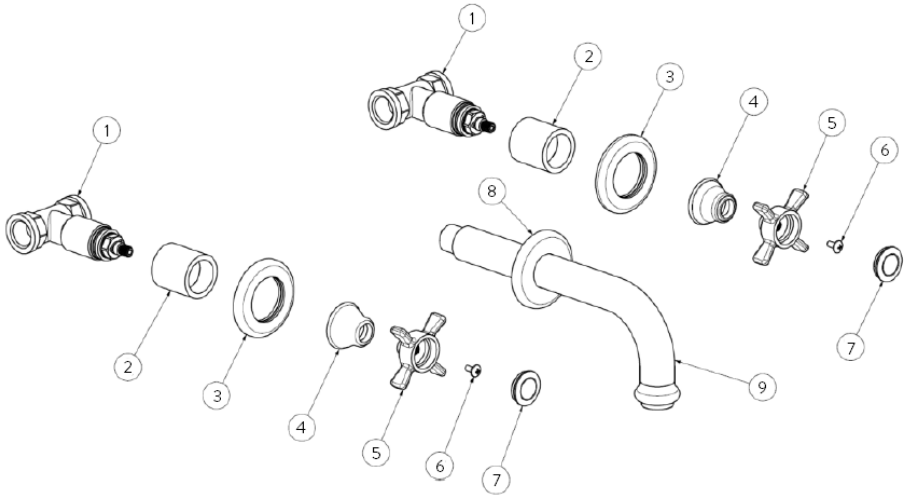
Mounting the pop-up waste (4), Insert the pop-up rod (5) in the opposite hole and connect it with the horizontal rod of the pop-up waste by the clamp (6).

Connect the tap to the plumbing tightening the flexible hoses nuts by a 23 mm wrench (cold water right / hot water left).

*** Before making any inlet pipe connections, all supply pipes MUST be thoroughly flushed to remove debris. Failure to do this could result in damage to the cartridge and components or low flow from the mixer***

3 Hole Concealed Basin Mixers

Prepare a suitable hole in the wall and insert the rough parts (1) with the protections on (dimensions mean at finished wall including the coating). Make connections (cold water right / hot water left). To connect the spout using a G.1/2" female Tee (not supplied). Test the system for leaks



When the wall covering is applied, remove the protection caps and hand tighten the cover (2), insert the rosette (3), hand tighten the cap (4) and assemble the handle (5), secure it by tightening the screw (6).

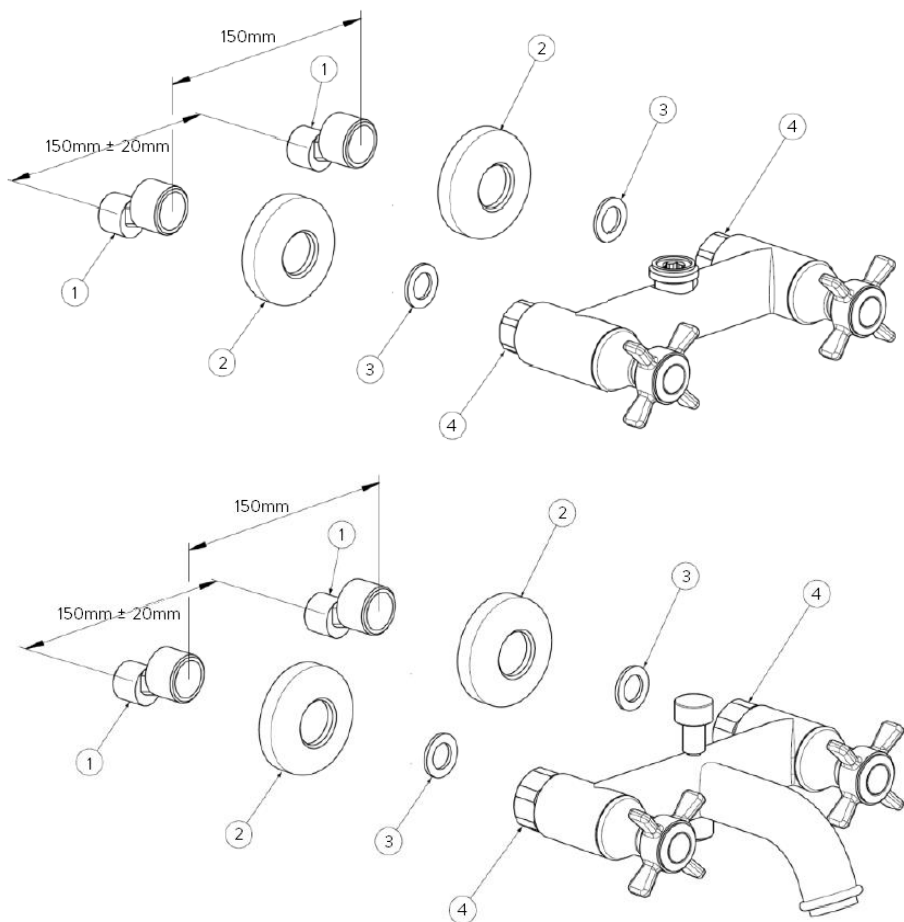
Hand-tighten the cap (7).

Insert the rosette (8) on the spout (9).

Hand tighten the spout (9) on the G.1/2" female Tee using hemp or Teflon for the sealing.

*** Before making any inlet pipe connections, all supply pipes MUST be thoroughly flushed to remove debris. Failure to do this could result in damage to the cartridge and components or low flow from the mixer***

Exposed Shower Mixer & Exposed Bath/Shower Mixer



Cold water inlet on the right, hot water inlet on the left.

Distance between water inlets: from 130 to 170mm.

Screw the eccentric connections (1) on the water inlets. Use hemp or Teflon tape for the sealing. Make sure that the distance between the $\frac{3}{4}$ " connections is 150mm.

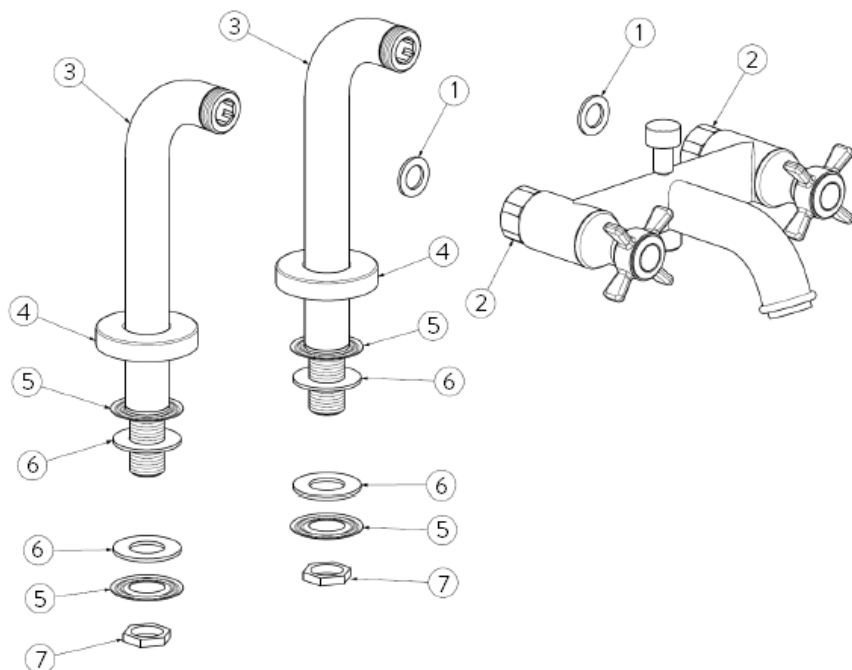
Tighten by hand the rosettes (2).

Insert the gaskets (3) into the nuts (4).

Connect the mixer to the plumbing by screwing the nuts (4) tightening with a 30mm wrench. Test the system for leaks.

*** Before making any inlet pipe connections, all supply pipes MUST be thoroughly flushed to remove debris. Failure to do this could result in damage to the cartridge and components or low flow from the mixer***

2 Hole Bath/Shower Mixer



Cold water inlet on the right, hot water inlet on the left.

Insert the gaskets (1) into the nuts (2).

Connect the mixer to the column connections (3) by screwing the nuts (2) tightening with a 30mm wrench.

Insert the rosette (4) on the column connection (3).

Insert the shaped washer (5) and the rubber gasket (6) on the threaded shank of the connection (3).

Insert the column connections into the holes made on the bath deck.

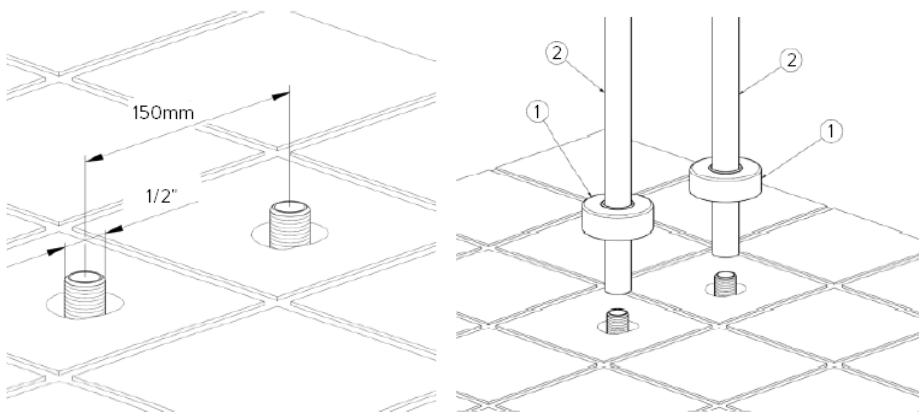
Insert the rubber gasket (6), the shaped washer (5) and the nut (7) on the threaded shank from the bottom of the bath deck.

Screw the nuts (7) with a 25 mm wrench.

Connect the column connections to the plumbing (cold water on the right / hot water on the left). Test the system for leaks.

*** Before making any inlet pipe connections, all supply pipes MUST be thoroughly flushed to remove debris. Failure to do this could result in damage to the cartridge and components or low flow from the mixer***

Floor Mounted Bath/Shower Mixer

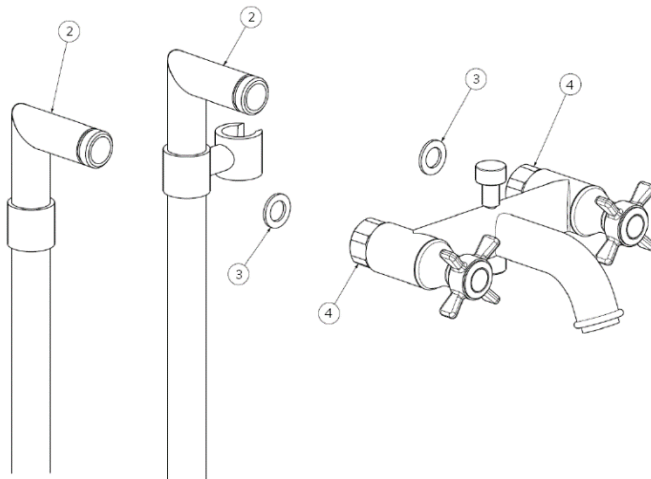


Cold water inlet on the right, hot water inlet on the left.

Distance between water inlets: 150mm

Insert the rosette (1) on the floor column connection (2)

Connect the floor column connections to the plumbing using hemp or Teflon tape for the sealing.

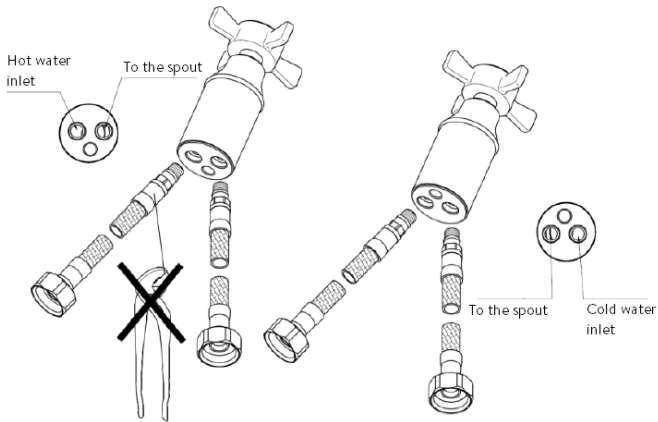


Insert the gaskets (3) into the nuts (4).

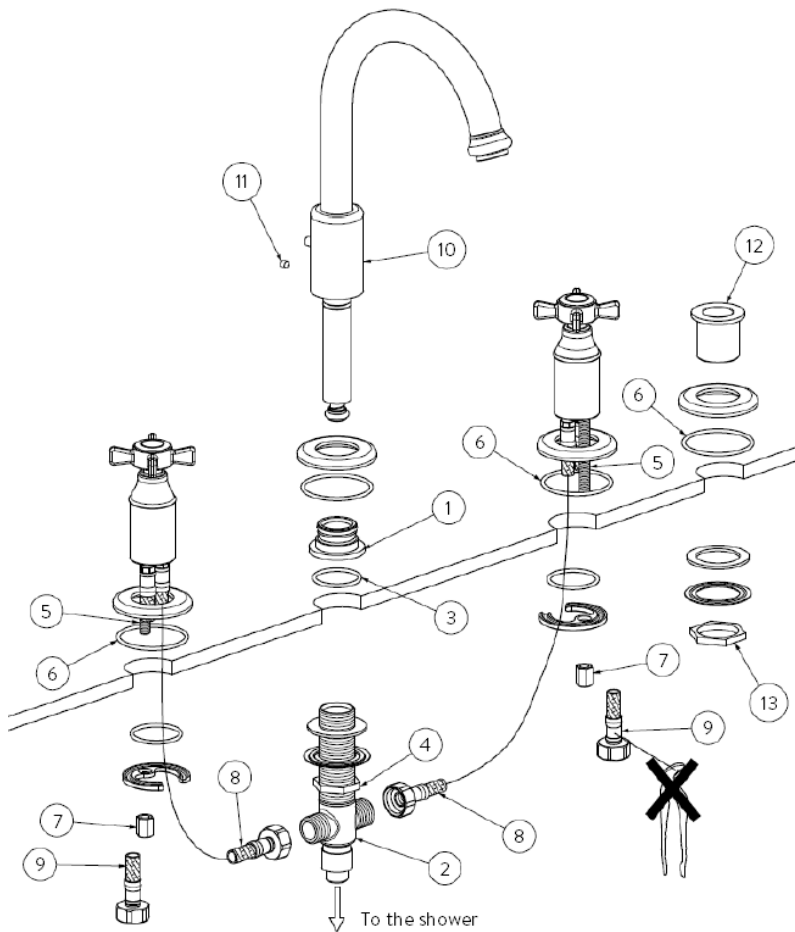
Connect the mixer to the floor column connections by screwing the nuts (4) tightening with a 30mm wrench. Test the system for leaks.

*** Before making any inlet pipe connections, all supply pipes MUST be thoroughly flushed to remove debris. Failure to do this could result in damage to the cartridge and components or low flow from the mixer***

4 Hole Bath/Shower Mixer



Hand tighten the flexible hoses as shown in the picture.



4 Hole Bath/Shower Mixer *Cont...*

Place the spout holder (1) on the deck of the tub and screw the cross connection (2). Insert the gasket (3) between tub and holder.

Fix all by screwing the nut (4) by a 31mm wrench.

Hand tighten the threaded shafts (5) on the taps and insert the gaskets (6) between the taps and the tub.

Fix the taps on the deck of the tub by tightening the nuts (7) by an 11 mm wrench.

Connect the taps to the cross connection (2) by tightening the flexible hoses nuts (8) by a 23 mm wrench.

Connect the taps to the plumbing tightening the flexible hoses nuts (9) by a 23 mm wrench (cold water right / hot water left).

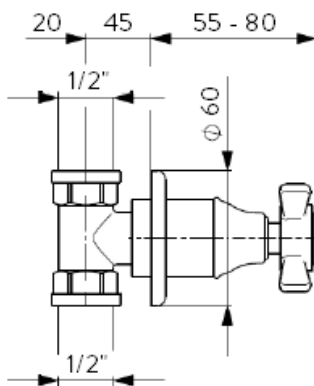
Insert the spout (10) in the spout holder (1) and fix it by screwing the pin with a 2,5mm Allen key.

Place the shower holder (12) on the deck of the tube and fix it by screwing the nut (13) with a 37mm wrench. Insert the gasket (6) between shower holder and tub.

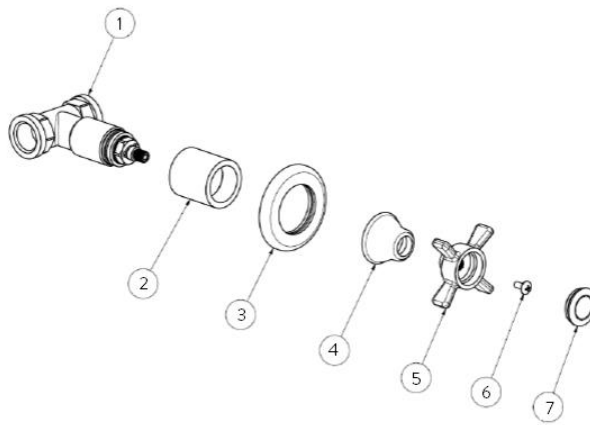
Connect the shower. Test the system for leaks

*** Before making any inlet pipe connections, all supply pipes MUST be thoroughly flushed to remove debris. Failure to do this could result in damage to the cartridge and components or low flow from the mixer***

Concealed Shut-off valve



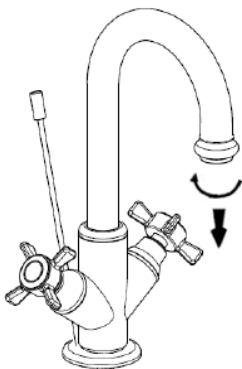
Prepare a suitable hole in the wall and insert the rough parts (1) with the protections on (dimensions mean at finished wall including the coating). Make connections (cold water right / hot water left).



When the wall covering is applied, remove the protection caps and hand tighten the cover (2), insert the rosette (3), hand tighten the cap (4) and assemble the handle (5), secure it by tightening the screw (6). Hand-tighten the cap (7).

*** Before making any inlet pipe connections, all supply pipes MUST be thoroughly flushed to remove debris. Failure to do this could result in damage to the cartridge and components or low flow from the mixer***

MAINTENANCE



Periodically the aerator will need to be cleaned, simply unscrew the aerator housing

Remove the aerator from the spout

Flush the aerator under water to remove the small debris.

Install the aerator back into the tap a re-tighten the housing.

BAGNODESIGN

EXPERTLY CRAFTED BATHROOMS

Oakwell Way, Birstall
Leeds, England WF9 17LU

A member of  SANIPEXGROUP