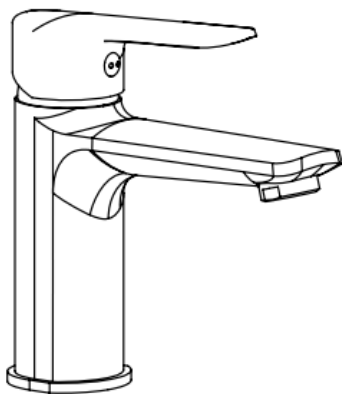


AQUAZONE

QUALITY PLUMBING SOLUTIONS

General Installation Guide



DIPLOMAT

mono basin/bidet mixers –
exposed/concealed shower mixers –
kitchen mixer

A member of  SANIPEXGROUP

Please leave these instructions with the customer

IMPORTANT PLEASE READ

Remove all packaging and check the product for missing parts or damage before starting installation.

Any alterations made to this product and fittings may infringe water regulations and invalidate the guarantee.

The Installation must comply with all Local/National Water Supply Authority Regulations/Byelaws and Building and Plumbing Regulations.

We strongly recommend that your product be installed by a reputable qualified trade's person.

General Installation:

To the Installer, please read and follow this instruction carefully, as the guarantee is only valid if the product is installed as directed.

Don't rush, read the instructions first and run through them before you begin. Keep fittings together to avoid loss. Do not over tighten screws or bolts.

If the product is covered with polyethylene protective film, do not remove until installation is complete to grant maximum protection. However, remove film where any two surfaces will be in permanent contact.

Before making any inlet pipe connections, all supply pipes MUST be thoroughly flushed to remove debris.

The fitting of an in-line filter is recommended, Failure to do this could result in damage to the cartridge and components or low flow from the mixer.

The fitting of isolation/stop valves on the inlet feeds is advised for ease of maintenance.

Please leave this installation manual with the end user once the product has been installed.

Product Aftercare:

We recommend cleaning with a soft damp cloth and mild soap solution. Do not use cream cleaners or cleaners containing bleach.

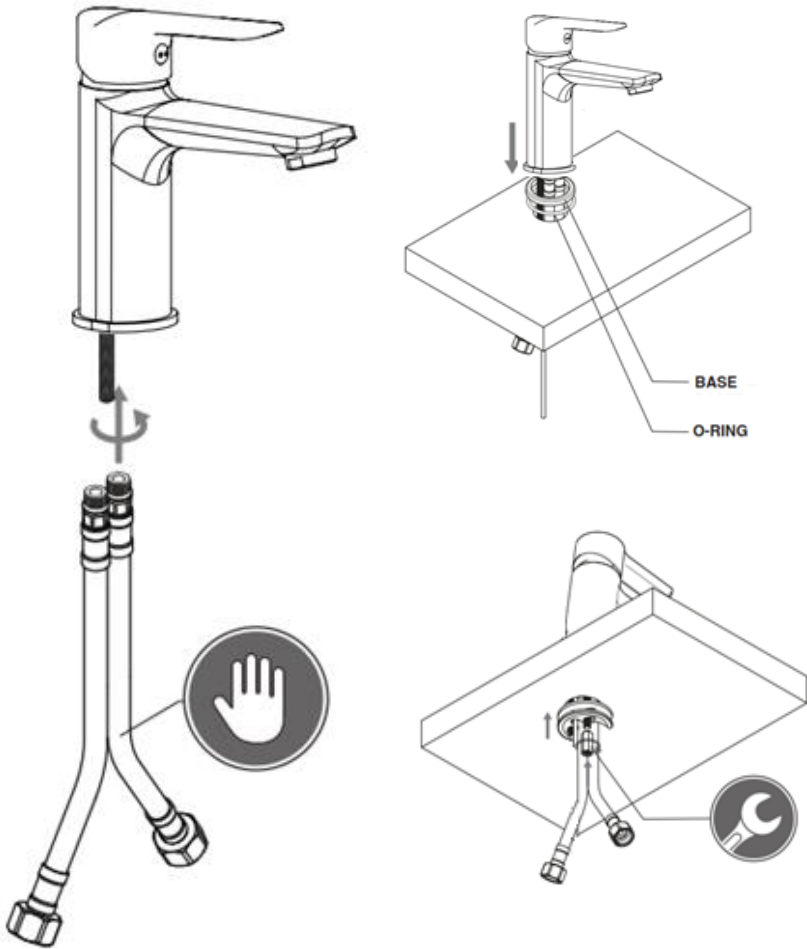
Do not scrub or scour.

Do not use abrasive cleaning agents.

Do not use solvent based cleaners.

This installation guide is for reference only. In case there is a discrepancy between that of the instructions and that of the actual product, the latter should be taken as standard. The rights of modification are reserved.

Mono Basin Mixer



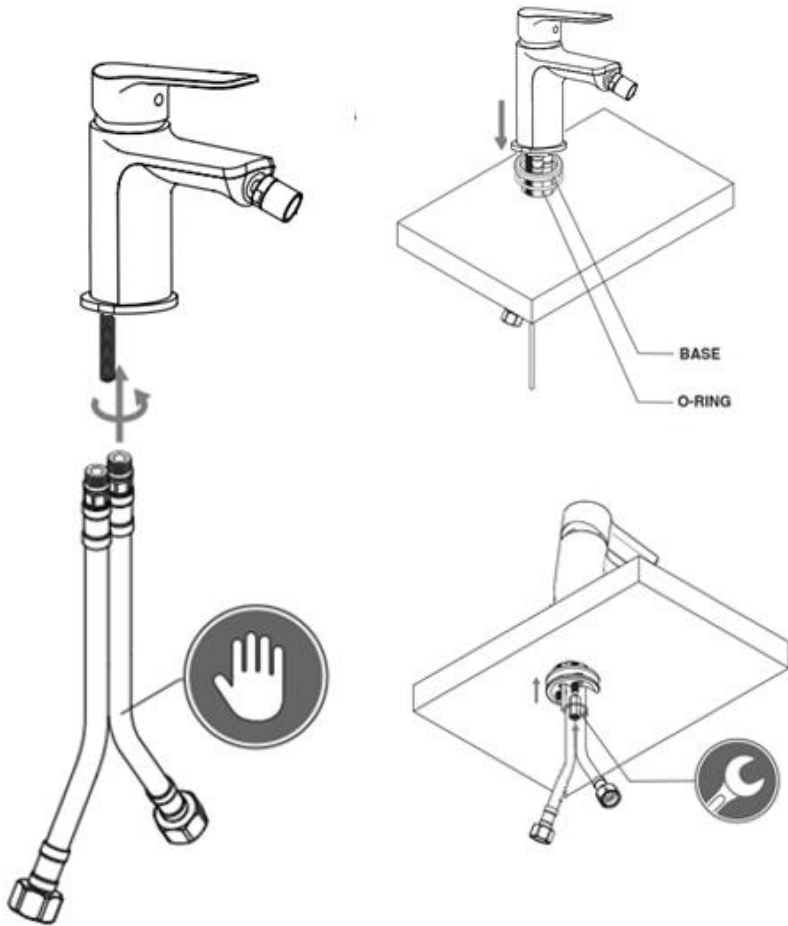
Place the threaded rod and 2 flexible pipes into the body of the mixer. place the assembly through the basin / counter making sure to install the base ring and washer.

From the underside, place the 'O' ring followed by the metal 'C' washer onto the threaded rod, then tighten to clamp the mixer to the basin / counter with the back nuts, being careful not to over tighten.

Install the flexible pipes, Open the water supplies and test for leaks on the connections.

*** Before making any inlet pipe connections, all supply pipes MUST be thoroughly flushed to remove debris. Failure to do this could result in damage to the cartridge and components or low flow from the mixer***

Mono Bidet Mixer



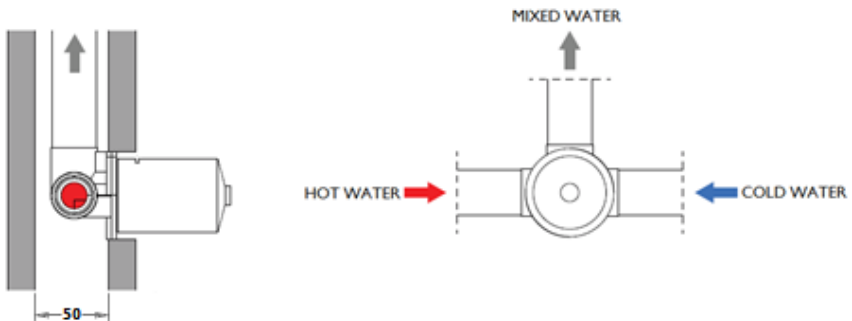
Place the threaded rod and 2 flexible pipes into the body of the mixer. place the assembly through the basin / counter making sure to install the base ring and washer.

From the underside, place the 'O' ring followed by the metal 'C' washer onto the threaded rod, then tighten to clamp the mixer to the basin / counter with the back nuts, being careful not to over tighten.

Install the flexible pipes, Open the water supplies and test for leaks on the connections.

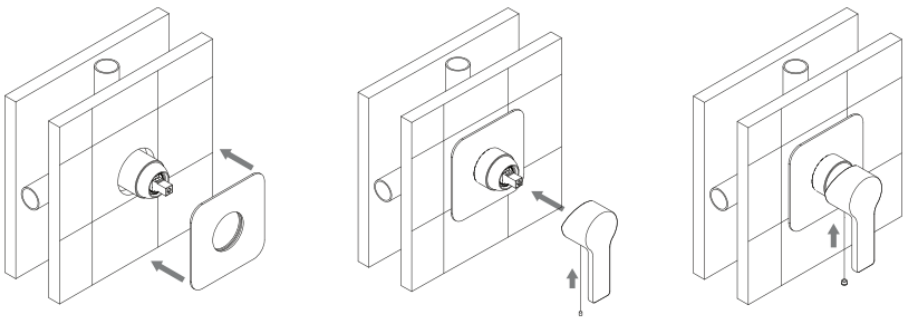
*** Before making any inlet pipe connections, all supply pipes MUST be thoroughly flushed to remove debris. Failure to do this could result in damage to the cartridge and components or low flow from the mixer***

Concealed Shower Mixer



Install the mixer housing at a depth so that the finished surface is no further than the maximum distance marking shown in the diagram.

Connect the Hot and Cold water supplies to the mixer, then install the mixed water supply, cap off and pressure test to prevent any future leakage*

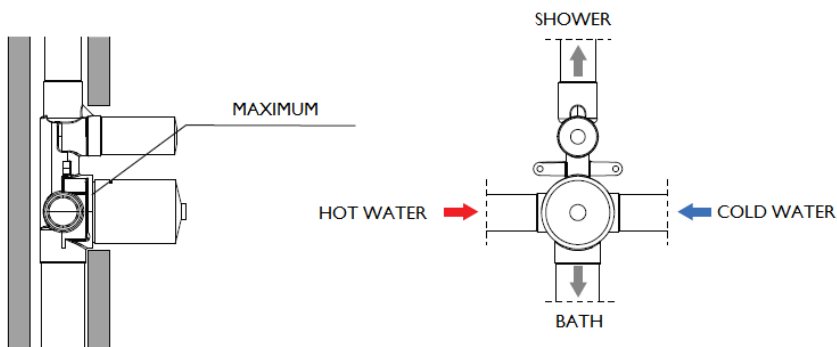


Once the surrounding finishes have been applied (Tiles/Marble etc.) remove the protection covers. Fit the face plate onto the mixer body, it is advised to use a small amount of lubricant on the rubber seals. Slide the handle onto the cartridge pin and secure with the grub screw, then push on the cover cap.

Open the water supplies and re-test for leaks.

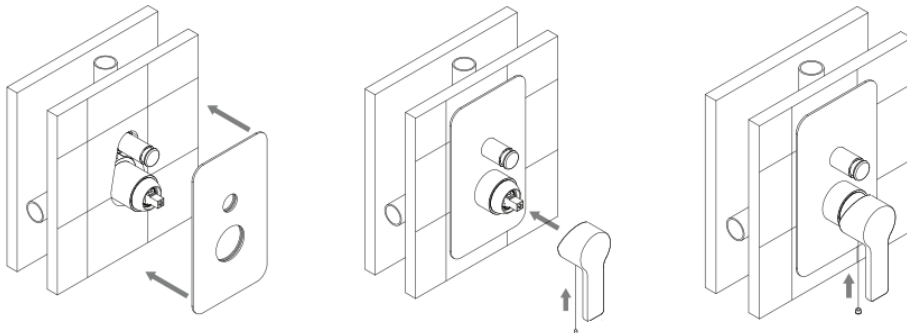
*** Before making any inlet pipe connections, all supply pipes MUST be thoroughly flushed to remove debris. Failure to do this could result in damage to the cartridge and components or low flow from the mixer***

Concealed Shower Mixer with Diverter



Install the mixer housing at a depth so that the finished surface is no further than the maximum distance marking shown in the diagram.

Connect the Hot and Cold water supplies to the mixer, then install the mixed and diverted water supplies, cap off and pressure test to prevent any future leakage*

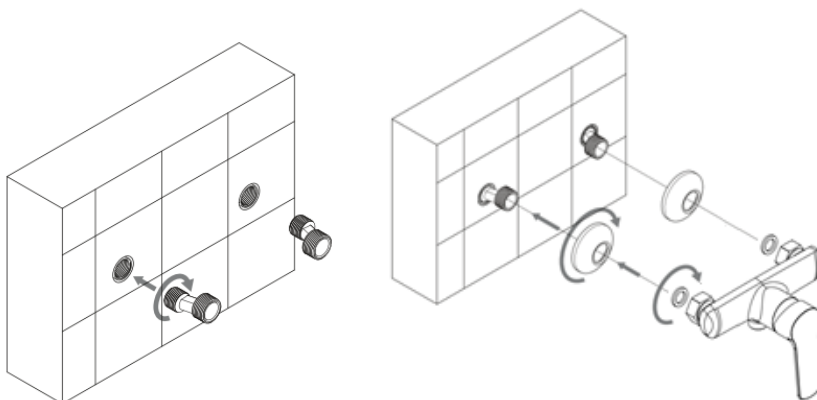


Once the surrounding finishes have been applied (Tiles/Marble etc.) remove the protection covers. Fit the face plate onto the mixer body, it is advised to use a small amount of lubricant on the rubber seals. Slide the handle onto the cartridge pin and secure with the grub screw, then push on the cover cap.

Open the water supplies and re-test for leaks.

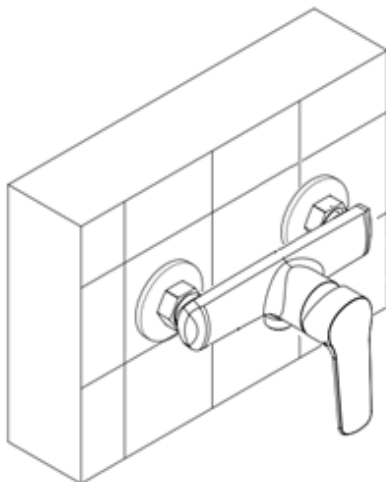
*** Before making any inlet pipe connections, all supply pipes MUST be thoroughly flushed to remove debris. Failure to do this could result in damage to the cartridge and components or low flow from the mixer***

Exposed Bath/Shower Mixer



Pre install 2x ½" female fittings into the wall, these fittings should be flush to the finished wall surface. Wrap the 2 eccentrics with PTFE tape and install into the wall provisions, making sure the eccentrics are level and are the correct distance apart. Screw on the cover shrouds until secure against the wall surface.

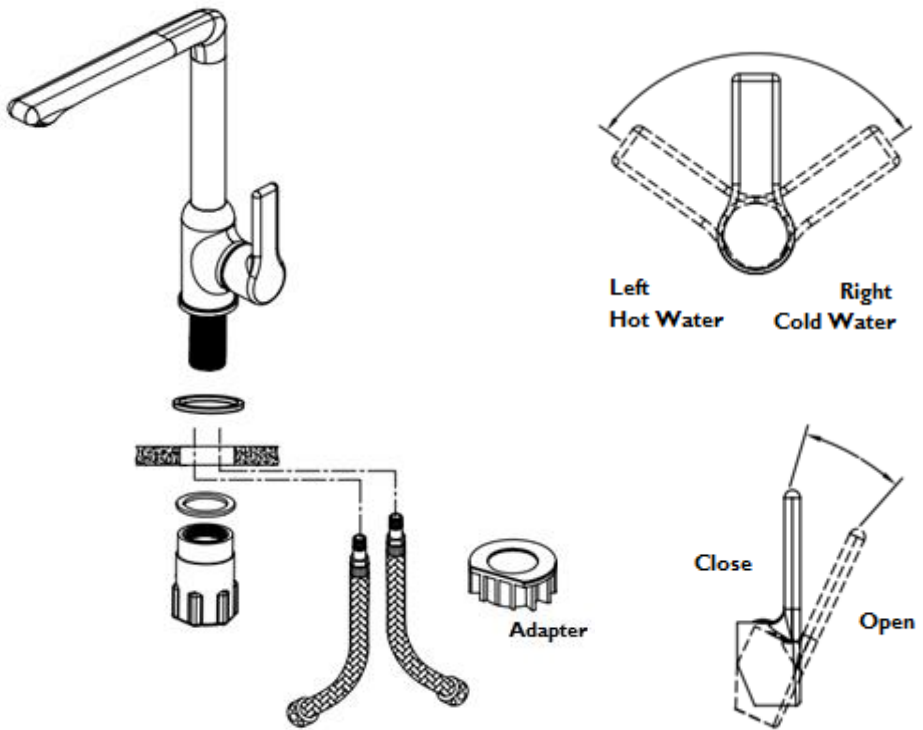
Place the 'O' rings into the nut connections and tighten to the eccentrics.



Open the Water supplies and test.

*** Before making any inlet pipe connections, all supply pipes MUST be thoroughly flushed to remove debris. Failure to do this could result in damage to the cartridge and components or low flow from the mixer***

Kitchen Mixer



Place the 2 flexible pipes into the body of the mixer. place the assembly through the sink / counter making sure to install the base ring and washer.

From the underside, place the 'O' ring and then tighten the back nut to clamp the mixer to the sink / counter with the back nuts, being careful not to over tighten.

If using a sink / counter with a thin depth, use the adapter on the underside before the 'O' ring and back nut.

Install the flexible pipes, Open the water supplies and test for leaks on the connections.

*** Before making any inlet pipe connections, all supply pipes MUST be thoroughly flushed to remove debris. Failure to do this could result in damage to the cartridge and components or low flow from the mixer***

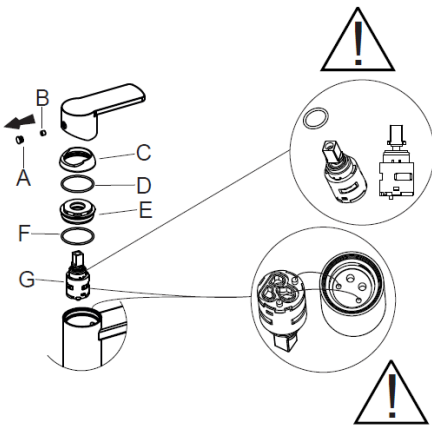
MAINTENANCE



Periodically the aerator will need to be cleaned.

Remove the aerator from the spout
Flush the aerator under water to remove the small debris.

Install the aerator back into the tap and re-tighten.

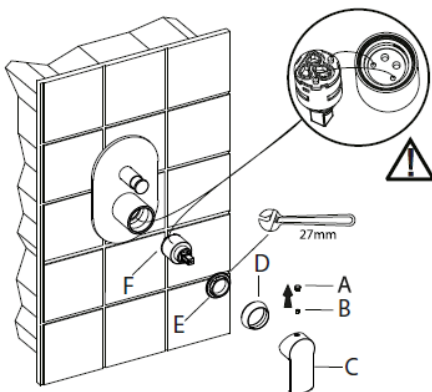


Deck Mixer Cartridges:

To remove the cartridge, remove the push cover (A), using an Allen key loosen the grub screw (B) this will allow the handle to be removed.

Unwind the shroud (C) and remove washer (D), Carefully with a spanner loosen the locking nut (E) and remove washer (F), this will allow the cartridge (G) to be taken out and replaced. Be careful not to lose any of the assembly parts.

When inserting the new cartridge make sure the 2 locating points align, then re-assemble as above.



Concealed Mixer Cartridges:

To remove the cartridge, remove the push cover (A), using an Allen key loosen the grub screw (B) this will allow the handle (C) to be removed.

Unwind the shroud (D), carefully with a spanner loosen the locking nut (E), this will allow the cartridge (F) to be taken out and replaced. Be careful not to lose any of the assembly parts.

When inserting the new cartridge make sure the 2 locating points align, then re-assemble as above.

AQUAZONE

QUALITY PLUMBING SOLUTIONS

Oakwell Way, Birstall
Leeds, England WF9 17LU

A member of  SANIPEXGROUP