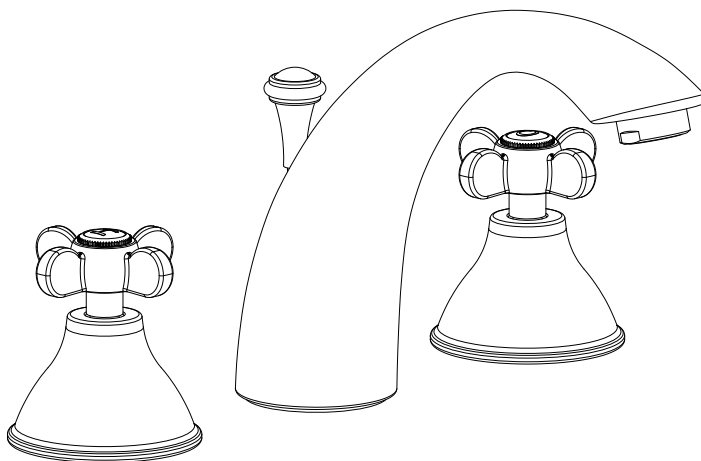


BAGNODESIGN

EXPERTLY CRAFTED BATHROOMS

Installation Guide



BDM-PRI-303-XX
CLASSIC 3 HOLE BASIN MIXER W/PUW

A member of **SANIPEXGROUP**
www.sanipexgroup.com

IMPORTANT PLEASE READ

Remove all packaging and check the product for missing parts or damage before starting installation.

Any alterations made to this product and fittings may infringe water regulations and invalidate the guarantee.

The Installation must comply with all Local/National Water Supply Authority Regulations/Byelaws and Building and Plumbing Regulations.

We strongly recommend that your product be installed by a reputable qualified trade's person.

General Installation:

To the Installer, please read and follow this instruction carefully, as the guarantee is only valid if the product is installed as directed.

Don't rush, read the instructions first and run through them before you begin. Keep fittings together to avoid loss. Do not over tighten screws or bolts.

If the product is covered with polyethylene protective film, do not remove until installation is complete to grant maximum protection. However, remove film where any two surfaces will be in permanent contact.

Before making any inlet pipe connections, all supply pipes MUST be thoroughly flushed to remove debris.

The fitting of an in-line filter is recommended, Failure to do this could result in damage to the cartridge and components or low flow from the mixer.

The fitting of isolation/stop valves on the inlet feeds is advised for ease of maintenance.

Please leave this installation manual with the end user once the product has been installed.

Product Aftercare:

We recommend cleaning with a soft damp cloth and mild soap solution. Do not use cream cleaners or cleaners containing bleach.

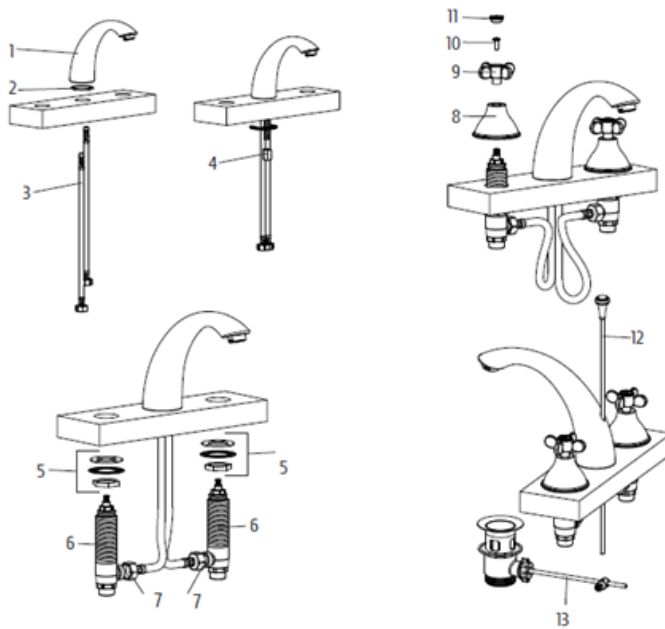
Do not scrub or scour.

Do not use abrasive cleaning agents.

Do not use solvent based cleaners.

This installation guide is for reference only. In case there is a discrepancy between that of the instructions and that of the actual product, the latter should be taken as standard. The rights of modification are reserved.

3-hole Basin Mixer



Assemble the parts as per the diagram.

Ensure that the mains water supply is turned off before installation.

Insert the Hot and Cold flexible tubes (3) and the threaded rod into the body of the spout (1).

Position the surface washer (2) onto the bottom of the mixer (1) and place the assembly onto the basin/ counter ensuring that the washer is in between the surface and the mixer. From the underside clamp the mixer to the basin/counter with the back nut (4), being careful not to over tighten. Screw the rubber washer, metal washer and back-nut (5) on the valve body right down to the bottom of the thread. Push the assembly up through the fixing surface from the underside and secure with the cover shroud (8). Now tighten up (5) to the fixing surface so that the valve body is secure. Repeat for other valve.

Slide the handle (9) on to the cartridge pin and secure with the screw (10), then push on the cover cap (11). Install the waste ensuring that the foam washer is in between the waste and basin on the top portion of the waste, the rubber washer is to be placed under the basin before the bottom part of the waste is tightened up. Take care not to over tighten.

Insert the vertical pop up rod (12) into the spout body (1) and connect to the horizontal rod (13) on the waste body using the connector provided. Slide down push rod into rod link then push both rods down to the furthest point and tighten. Connect the water supplies and test for leaks on the connections

*** Before making any inlet pipe connections, all supply pipes MUST be thoroughly flushed to remove debris. Failure to do this could result in damage to the cartridge and components or low flow from the mixer***

