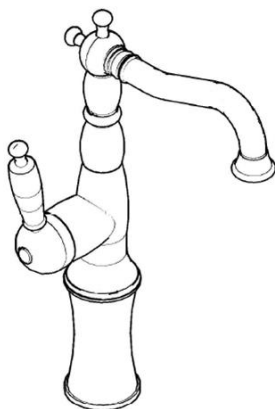


BAGNODESIGN

EXPERTLY CRAFTED BATHROOMS

General Installation Guide



PRINCESS NOUVEAU

mono/tall basin/bidet mixers – 3-hole
basin mixer – concealed basin/bidet
mixer - 3-hole concealed basin mixer - 4-
hole deck mounted bath mixer – exposed
mixers - concealed mixers

A member of  SANIPEXGROUP

Please leave these instructions with the customer

IMPORTANT PLEASE READ

Remove all packaging and check the product for missing parts or damage before starting installation.

Any alterations made to this product and fittings may infringe water regulations and invalidate the guarantee.

The Installation must comply with all Local/National Water Supply Authority Regulations/Byelaws and Building and Plumbing Regulations.

We strongly recommend that your product be installed by a reputable qualified trade's person.

General Installation:

To the Installer, please read and follow this instruction carefully, as the guarantee is only valid if the product is installed as directed.

Don't rush, read the instructions first and run through them before you begin. Keep fittings together to avoid loss. Do not over tighten screws or bolts.

If the product is covered with polyethylene protective film, do not remove until installation is complete to grant maximum protection. However, remove film where any two surfaces will be in permanent contact.

Before making any inlet pipe connections, all supply pipes MUST be thoroughly flushed to remove debris.

The fitting of an in-line filter is recommended, Failure to do this could result in damage to the cartridge and components or low flow from the mixer.

The fitting of isolation/stop valves on the inlet feeds is advised for ease of maintenance.

Please leave this installation manual with the end user once the product has been installed.

Product Aftercare:

We recommend cleaning with a soft damp cloth and mild soap solution. Do not use cream cleaners or cleaners containing bleach.

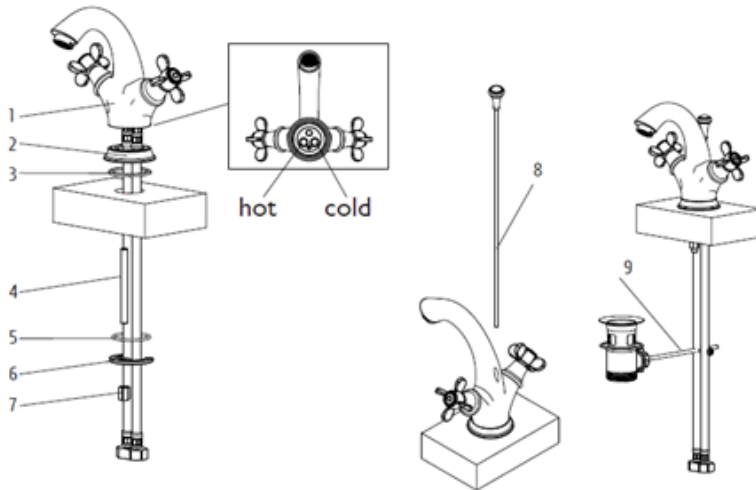
Do not scrub or scour.

Do not use abrasive cleaning agents.

Do not use solvent based cleaners.

This installation guide is for reference only. In case there is a discrepancy between that of the instructions and that of the actual product, the latter should be taken as standard. The rights of modification are reserved.

Mono Basin/Bidet Mixers



Assemble the parts as per the diagram.

Ensure that the mains water supply is turned off before installation.

Insert the Hot and Cold flexible tubes and the threaded rod (4) into the body of the mixer (1).

Position the base ring (2) and the surface washer (3) onto the bottom of the mixer (1) and place the assembly onto the basin/counter ensuring that the washer is in between the surface and the mixer.

From the underside, place the 'O' ring (5) followed by the metal washer (6) onto the threaded rod (4), then tighten to clamp the mixer to the basin/counter with the back nut (7), being careful not to over tighten.

Install the waste ensuring that the foam washer is in between the waste and basin on the top portion of the waste, the rubber washer is to be placed under the basin before the bottom part of the waste is tightened up. Take care not to over tighten.

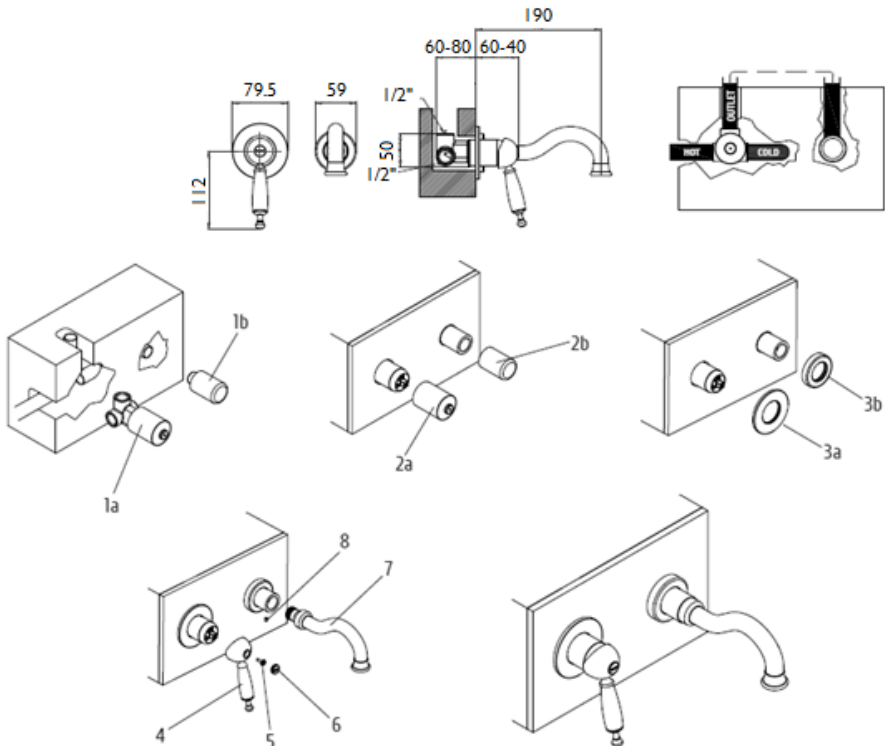
Insert the vertical pop up rod (8) into the mixer body and connect to the horizontal rod (9) on the waste body using the connector provided.

Slide down push rod into rod link then push both roads down to the furthest point and tighten.

Install the flexible pipes, Open the water supplies and test for leaks on the connections.

*** Before making any inlet pipe connections, all supply pipes MUST be thoroughly flushed to remove debris. Failure to do this could result in damage to the cartridge and components or low flow from the mixer***

Concealed Basin Mixer



Assemble the parts as per the diagram.

Ensure that the mains water supply is turned off before installation.

Pre-assemble the mixer housing (1a) and outlet connection (not supplied) to the desired width

Install the mixer housing (1a) and outlet connection at a depth so that the finished surface is between the Min/Max distances of 60-80mm. Connect the Hot and Cold water supplies to the mixer and cap off the outlet connection, pressure test to check for leaks*. Remove the cap and install the spout connector (1b) add the protection covers (2a & 2b). Once the surrounding finishes have been applied (Tiles/Marble etc.) remove the protection covers (2a & 2b) and discard.

Slide the cover plates (3a & 3b) on to the mixer body (1a) and spout connector (1b) lubricant can be used on the rubber seals if required.

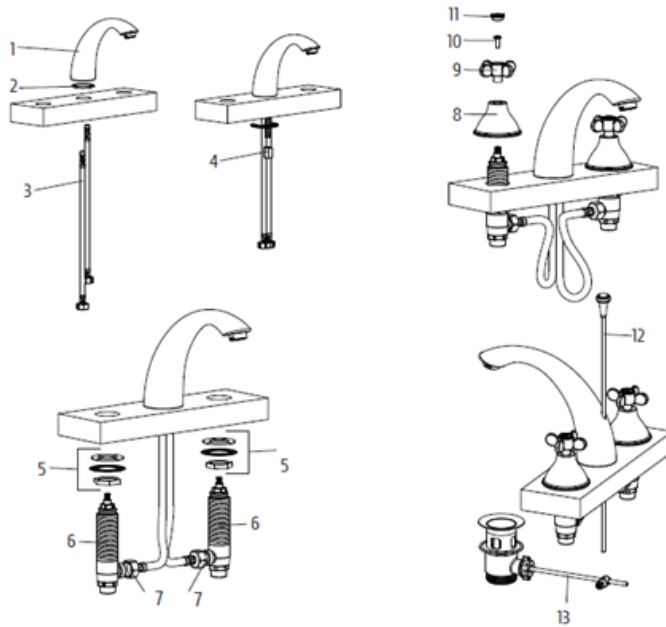
Slide the handle (4) on to the cartridge pin and secure with the screw (5), then push on the cover cap (6)

Slide the spout (7) again lubricant can be used on the rubber seals and secure with grub screw (8)

Open the water supplies and re-test for leaks.

*** Before making any inlet pipe connections, all supply pipes MUST be thoroughly flushed to remove debris. Failure to do this could result in damage to the cartridge and components or low flow from the mixer***

3-hole Basin Mixer



Assemble the parts as per the diagram.

Ensure that the mains water supply is turned off before installation.

Insert the Hot and Cold flexible tubes (3) and the threaded rod into the body of the spout (1).

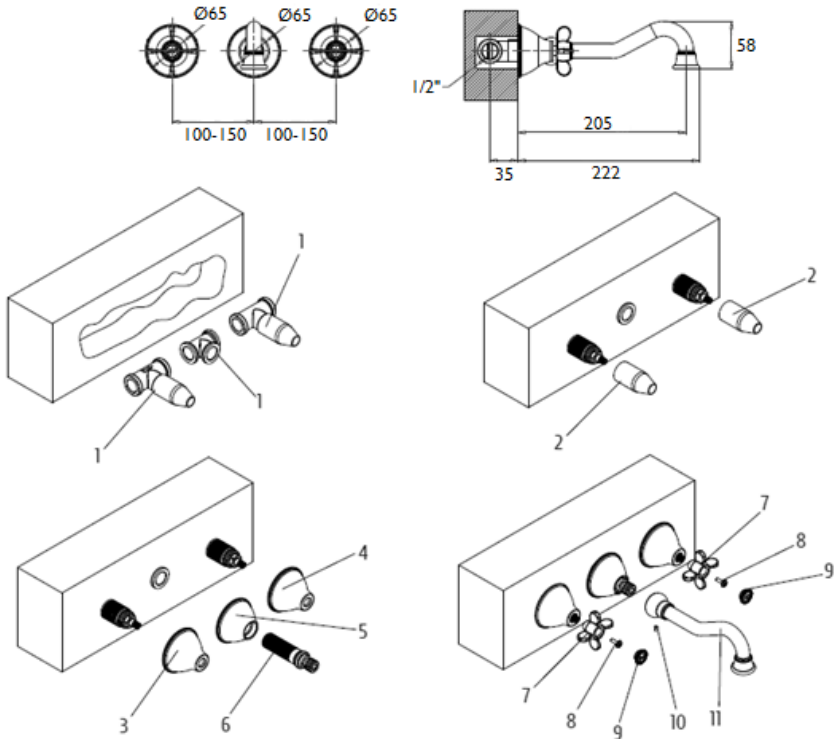
Position the surface washer (2) onto the bottom of the mixer (1) and place the assembly onto the basin/ counter ensuring that the washer is in between the surface and the mixer. From the underside clamp the mixer to the basin/counter with the back nut (4), being careful not to over tighten. Screw the rubber washer, metal washer and back-nut (5) on the valve body right down to the bottom of the thread. Push the assembly up through the fixing surface from the underside and secure with the cover shroud (8). Now tighten up (5) to the fixing surface so that the valve body is secure. Repeat for other valve.

Slide the handle (9) on to the cartridge pin and secure with the screw (10), then push on the cover cap (11). Install the waste ensuring that the foam washer is in between the waste and basin on the top portion of the waste, the rubber washer is to be placed under the basin before the bottom part of the waste is tightened up. Take care not to over tighten.

Insert the vertical pop up rod (12) into the spout body (1) and connect to the horizontal rod (13) on the waste body using the connector provided. Slide down push rod into rod link then push both rods down to the furthest point and tighten. Connect the water supplies and test for leaks on the connections

*** Before making any inlet pipe connections, all supply pipes MUST be thoroughly flushed to remove debris. Failure to do this could result in damage to the cartridge and components or low flow from the mixer***

3-hole Concealed Basin Mixer



Assemble the parts as per the diagram.

Ensure that the mains water supply is turned off before installation.

Pre-assemble the 2 mixer housings (1) and outlet connection (1) to the desired width.

Install the assembly at a depth so that the finished surface is 35mm from the center of the water inlet. Connect the Hot and Cold water supplies to the mixer and cap off the outlet connection, pressure test to check for leaks*. Remove the cap and place on the protection covers (2).

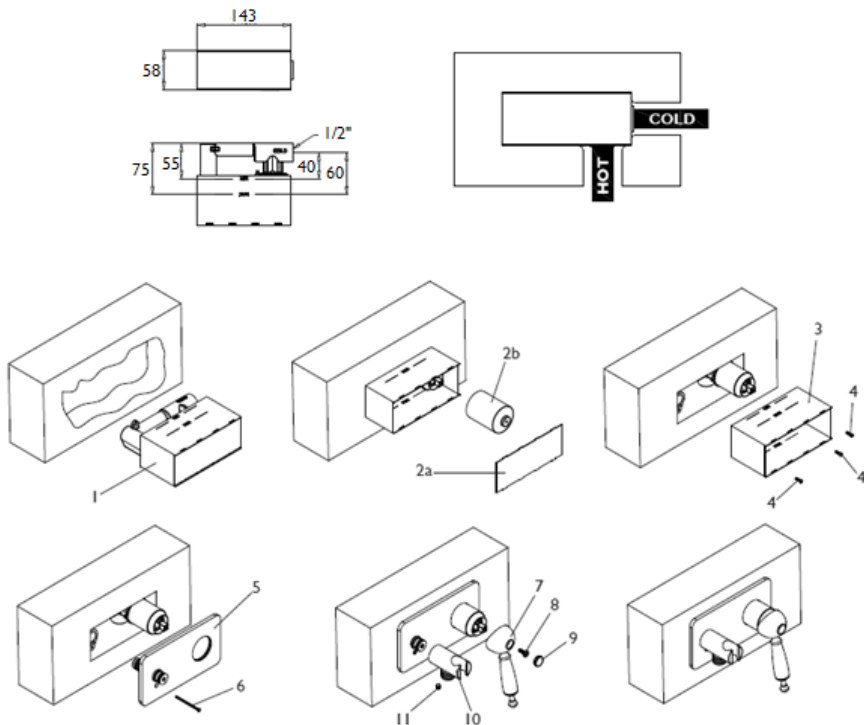
Once the surrounding finishes have been applied (Tiles/Marble etc.) remove the protection covers (2) and discard.

Screw in the spout connector (6) then screw on the cover shrouds (3,4&5) until secure against the wall surface. Slide the handle (7) on to the cartridge pin and secure with the screw (8), then push on the cover cap (9). Slide the spout (11) onto spout connector (6), lubricant can be used on the rubber seals and secure with grub screw (10)

Open the water supplies and re-test for leaks.

*** Before making any inlet pipe connections, all supply pipes MUST be thoroughly flushed to remove debris. Failure to do this could result in damage to the cartridge and components or low flow from the mixer***

Bidet Spray Mixer



Assemble the parts as per the diagram.

Ensure that the mains water supply is turned off before installation

Install the mixer housing (1) at a depth so that the finished surface is between the Min/Max distance marked on the mixer housing. Connect the Hot and Cold water supplies to the mixer and pressure test to check for leaks at the connections*.

Once the surrounding finishes have been applied (Tiles/Marble etc.) remove the covers (2a/2b) and the screws (4) this will then release item (3), remove and discard.

Fit the face plate (5) onto the mixer body, lubricant can be used on the rubber seals if required, once in place secure the faceplate using the screw (6)

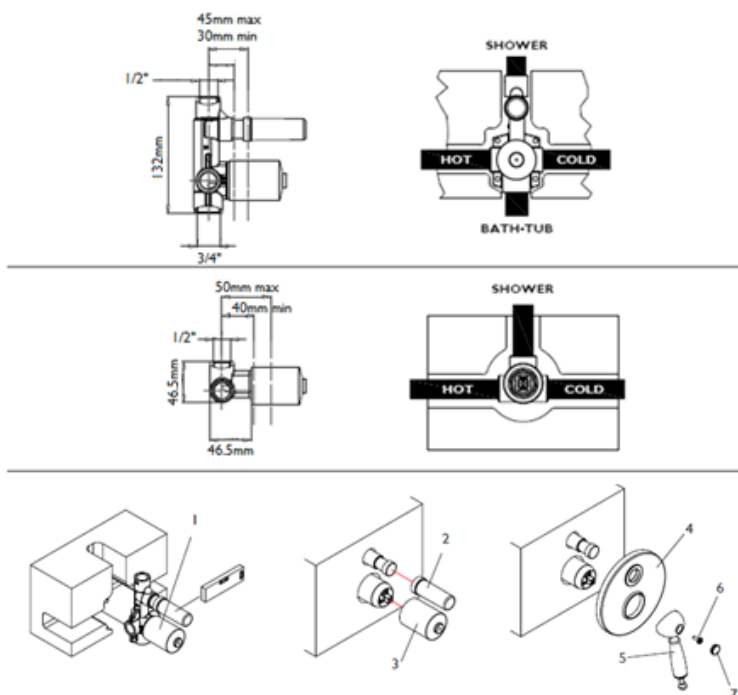
Slide the handle (7) on to the cartridge pin and secure with the screw (8), then push on the cover cap (9)

For the Hand-shower, slide the holder (10) in position and tighten the grub screw (11).

Open the water supplies and re-test for leaks.

*** Before making any inlet pipe connections, all supply pipes MUST be thoroughly flushed to remove debris. Failure to do this could result in damage to the cartridge and components or low flow from the mixer***

Concealed Shower Mixer *with/without* Diverter



Assemble the part as per the diagram.

Ensure that the mains water supply is turned off before installation.

Install the mixer housing (1) at a depth so that the finished surface is between the Min/Max distance markings shown in the diagram.

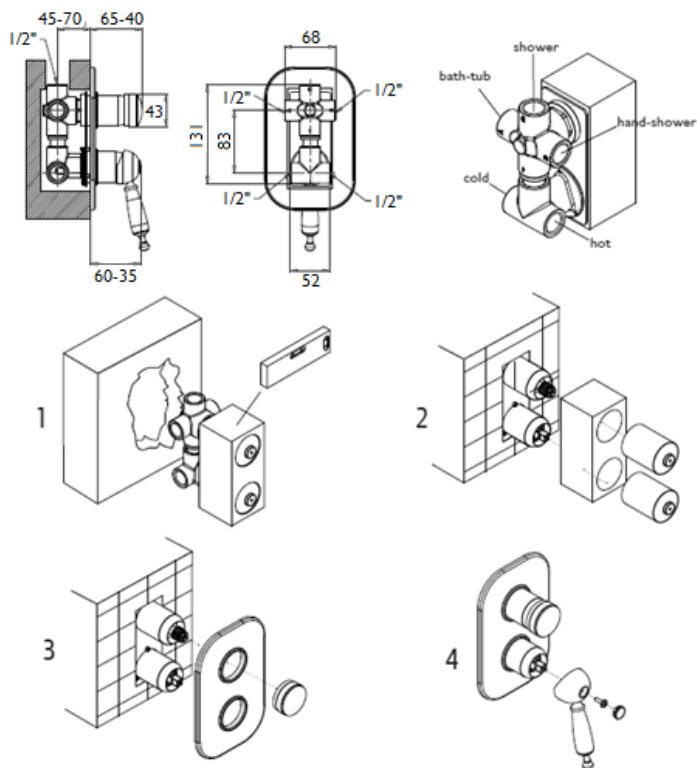
Connect the Hot and Cold water supplies to the mixer, then install the mixed and diverted water supplies, cap off and pressure test to prevent any future leakage*

Once the surrounding finishes have been applied (Tiles/Marble etc.) remove the protection covers (2&3). Fit the face plate (4) onto the mixer body, it is advised to use a small amount of lubricant on the rubber seals. Slide the handle (5) onto the cartridge pin and secure with the grub screw (6), then push on the cover cap (7).

Open the water supplies and re-test for leaks.

*** Before making any inlet pipe connections, all supply pipes MUST be thoroughly flushed to remove debris. Failure to do this could result in damage to the cartridge and components or low flow from the mixer***

Concealed Shower *with 3-way Diverter*



Assemble the part as per the diagram.

Ensure that the mains water supply is turned off before installation.

Install the mixer housing at a depth so that the finished surface is between the Min/Max distance markings shown on the diagram.

Connect the Hot and Cold water supplies to the mixer, then install the mixed and diverted water supplies, cap off and pressure test to prevent any future leakage*.

IMPORTANT: Leave the protection sponge installed until the surrounding finishes have been applied

Once the surrounding finishes have been applied (Tiles/Marble etc.) remove the protection covers and protection sponge.

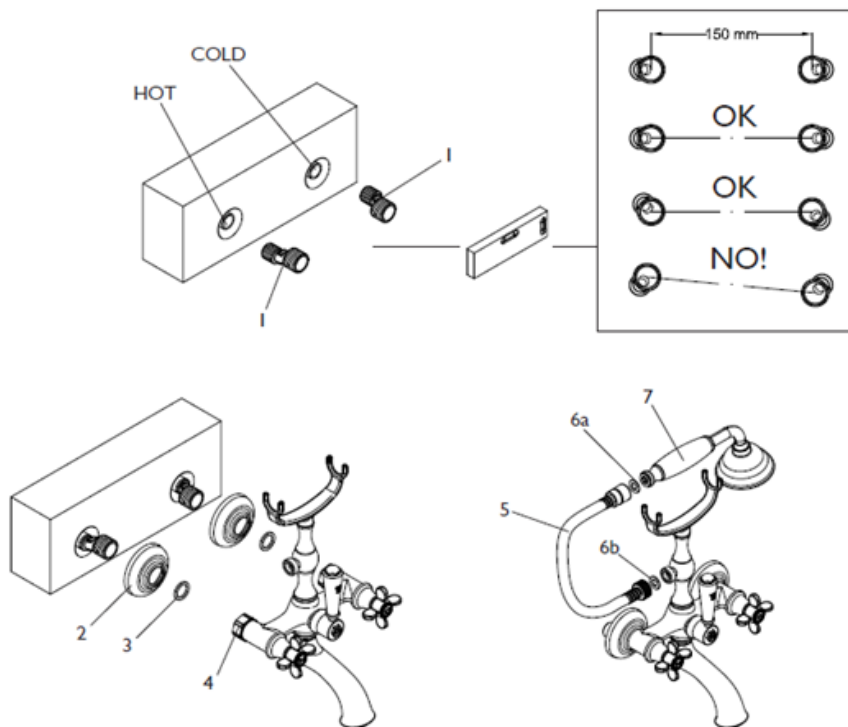
Slide the face plate on to the mixer body, lubricant can be used on the rubber seals if required. Install the diverter knob and secure with the grub screw, then push on the cover cap.

Slide the handle onto the cartridge pin and secure with the grub screw, then push on the cover cap.

Open the water supplies and re-test for leaks.

*** Before making any inlet pipe connections, all supply pipes MUST be thoroughly flushed to remove debris. Failure to do this could result in damage to the cartridge and components or low flow from the mixer***

Shower Mixer Exposed



Assemble the parts as per the diagram.

Ensure that the mains water supply is turned off before installation.

Wrap the 2 eccentrics (1) with PTFE tape and install into the hot and cold wall provisions, Making sure to level as per the above table.

Screw on the cover shrouds (2) until secure against the wall surface.

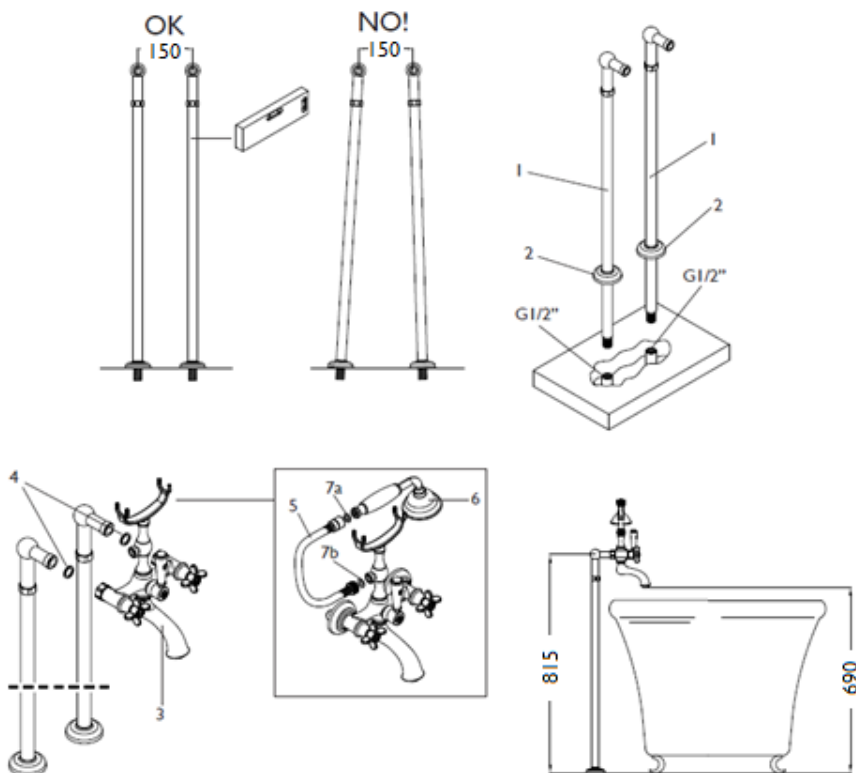
Place the 'O' rings (3) into the nut connections (4) and tighten to the eccentrics (1)

For Bath/Shower Mixers connect the Hand-shower hose (5) to the mixer outlet using rubber washer (6b) and to the hand-shower (7) using rubber washer (6a)

Open the Water supplies and test.

*** Before making any inlet pipe connections, all supply pipes MUST be thoroughly flushed to remove debris. Failure to do this could result in damage to the cartridge and components or low flow from the mixer***

Shower Mixer - Floor Pillars



Assemble the parts as per the diagram.

Ensure that the mains water supply is turned off before installation.

This item must be secured/anchored to a suitable substrate to ensure the mixer is stable.

Prepare the floor connections with G1/2" female joint, at distance of 150 mm between.

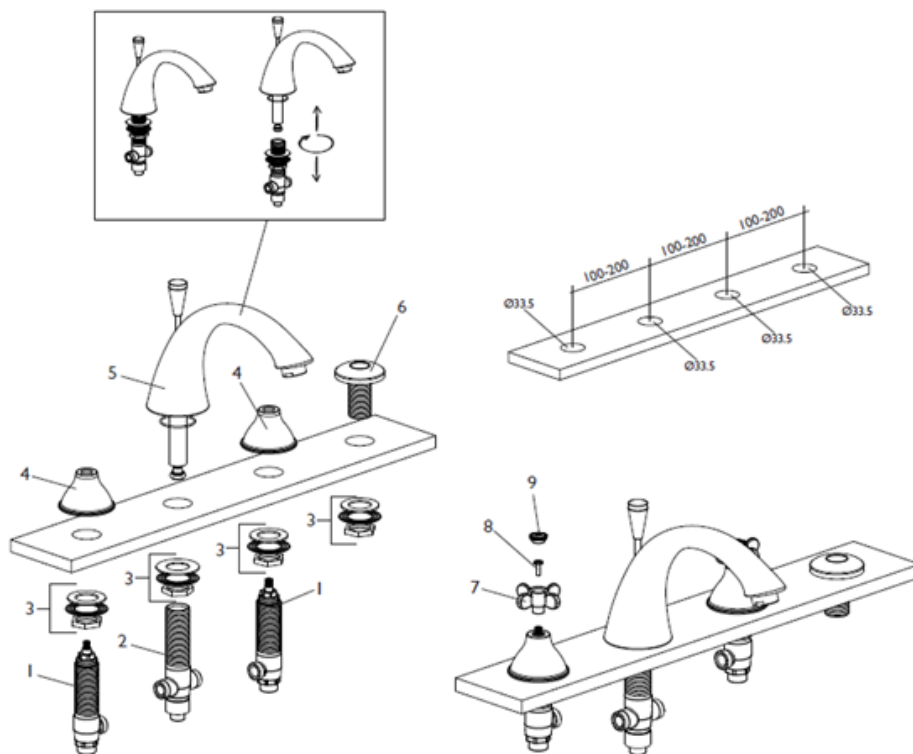
Install the floor pillars (1) and ensure that are completely straight once placed. Slide the covers (2) until secure against the floor. Place the 'O' rings (4) into the mixers nut connections (3) and tighten to the floor pillars (1)

For Bath/Shower Mixers connect the shower hose (5) to the mixer outlet using rubber washer (7b) and to the hand-shower (6) using rubber washer (7a)

Open the Water supplies and test.

*** Before making any inlet pipe connections, all supply pipes MUST be thoroughly flushed to remove debris. Failure to do this could result in damage to the cartridge and components or low flow from the mixer***

5-hole Deck Mounted Bath Filler – *Installation*



Assemble the parts as per the diagram.

Ensure that the mains water supply is turned off before installation.

Arrange the fixing surface to the dimensions shown in the diagram

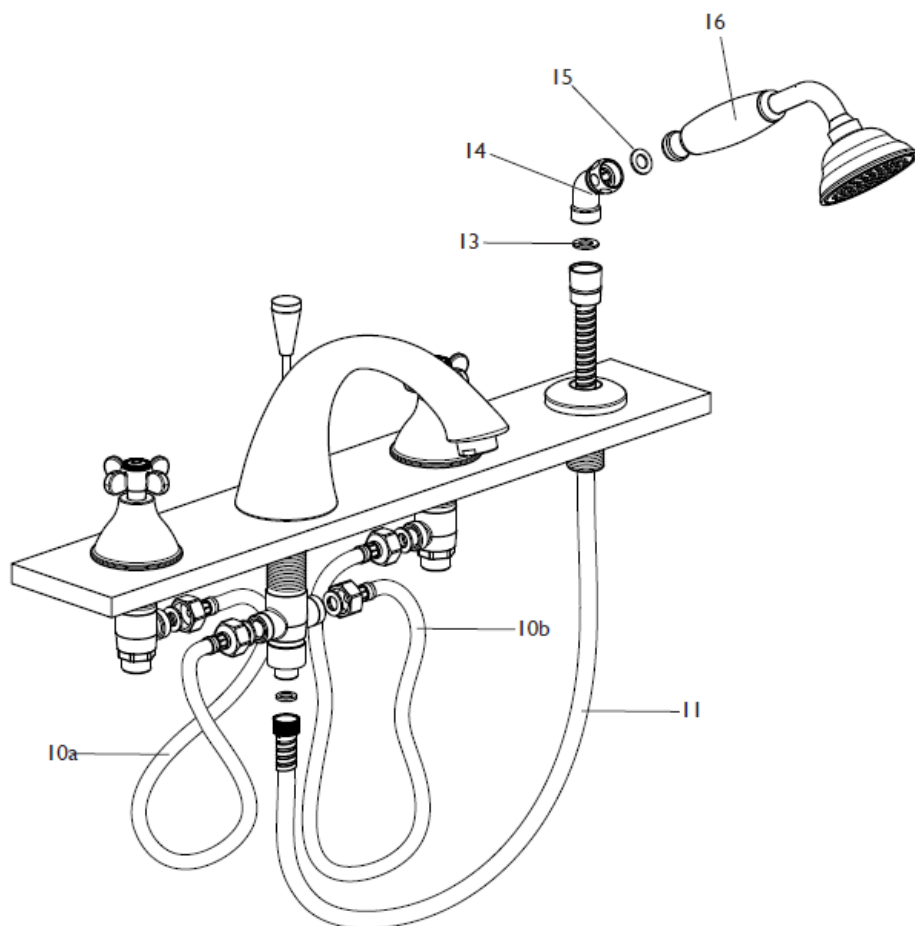
Firstly, remove the diverter body from the spout as shown, taking care to not to damage or lose the gaskets.

Screw the rubber washer, metal washer and back-nut (group 3) on the valve body right down to the bottom of the thread.

Push the assembly up through the fixing surface from the underside and secure with the cover shroud (4). Now tighten up (group 3) to the fixing surface so that the valve body is secure. Repeat for other valve and spout (2 & 5)

Install the hand-shower holder (6) and secure with rubber washer, metal washer and back-nut (group 3) Slide the handle (7) on to the cartridge pin and secure with the screw (8), then push on the cover cap (9)

5-hole Deck Mounted Bath Filler – Connections



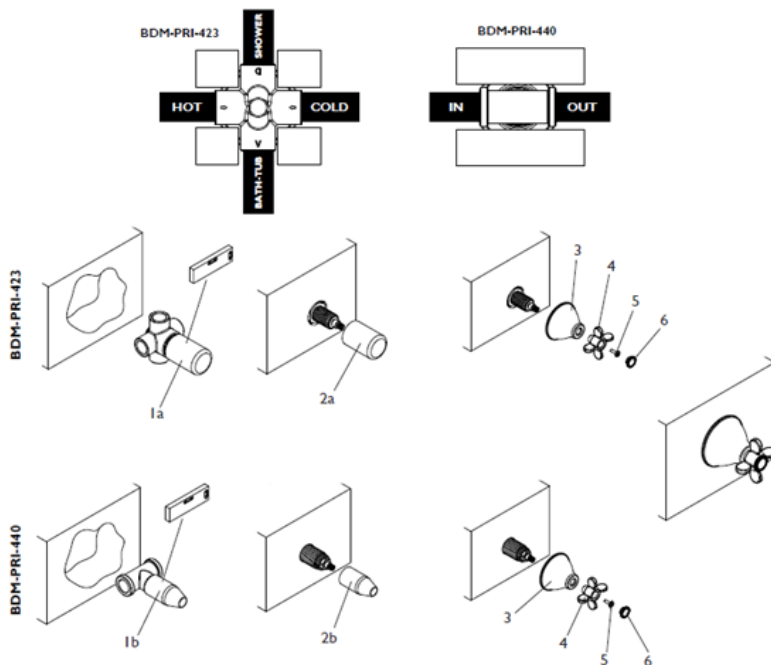
Connect one inlet valve to the diverter using flexible hose (10a) and the other using flexible hose (10b)

Connect the hand-shower elbow (14) to the shower hose (11) using rubber washer (13) slide the hose through the hand-shower holder (6) and connect to the 3/8" diverter water supply connection.

Connect the water supplies and test for leaks on the connections.

*** Before making any inlet pipe connections, all supply pipes MUST be thoroughly flushed to remove debris. Failure to do this could result in damage to the cartridge and components or low flow from the mixer***

Concealed 2-way Diverter/Stop valve



Assemble the part as per the diagram.

Ensure that the mains water supply is turned off before installation.

Install the assembly (1a or 1b) at a depth so that the finished surface is (32mm for **BDM-PRI-423** -) (34mm for **BDM-PRI-440** -) from the center of the water inlet. Connect the Hot and Cold water supplies to the mixer and cap off the outlet connection(s), pressure test to check for leaks*

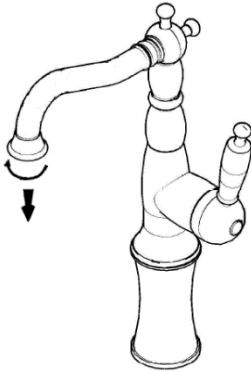
Remove the cap(s) and place on the protection cover (2a & 2b).

Once the surrounding finishes have been applied (Tiles/Marble etc.) remove the protection cover (2a & 2b) and discard. Screw on the cover shrouds (3) until secure against the wall surface. Slide the handle (4) on to the cartridge pin and secure with the screw (5), then push on the cover cap (6)

Open the water supplies and re-test for leaks.

*** Before making any inlet pipe connections, all supply pipes MUST be thoroughly flushed to remove debris. Failure to do this could result in damage to the cartridge and components or low flow from the mixer***

MAINTENANCE

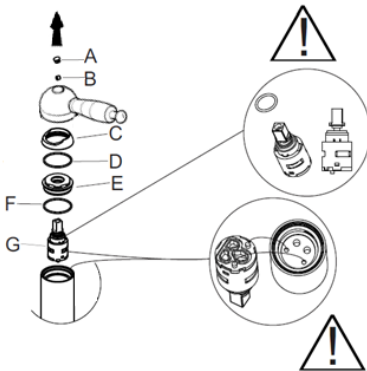


Periodically the aerator will need to be cleaned, simply unscrew the aerator housing.

Remove the aerator from the housing.

Flush the aerator under water to remove the small debris.

Install the aerator back into the housing and back into the tap.

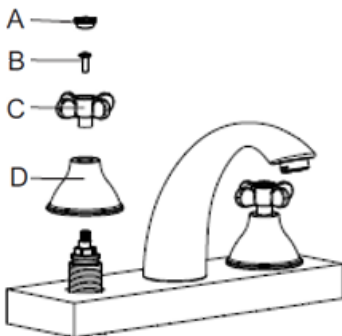


Mono Cartridges:

To remove the cartridge, remove the push cover (A), using an Allen key loosen the grub screw (B) this will allow the handle to be removed.

Unwind the shroud (C) and remove washer (D), Carefully with a spanner loosen the locking nut (E) and remove washer (F), this will allow the cartridge (G) to be taken out and replaced. Be careful not to lose any of the assembly parts.

When inserting the new cartridge make sure the 2 locating points align, then re-assemble as above.



1/4 Turn Cartridges:

To remove the cartridge, unscrew the indices (A), loosen the screw (B) they will allow the handle (C) to be removed. Unwind the shroud (D) this will allow access to the cartridge.

Using an adjustable spanner loosen the cartridge and fully unwind until it is removed.

Replace the cartridge and re-assemble as above.

BAGNODESIGN

EXPERTLY CRAFTED BATHROOMS

Oakwell Way, Birstall
Leeds, England WF9 17LU

A member of  SANIPEXGROUP