

AQUAZONE

QUALITY PLUMBING SOLUTIONS

Installation Guide



AQE-SAV-I301-A-XX

SAVOIA MONO TOUCHLESS BASIN TAP

A member of SANIPEXGROUP

Specifications of Infra-red Sensor Faucet

Item No.	DC Products	AC Products
Power Supply	DC6V(4 X AA Battery)	AC220V
Power Consumption	<0.2mW	<1W
Water Pressure	0.05MPa~0.7MPa	
Diameter of Water Supply	G1/2" (DN15)	
Ambient Temperature	0.1°C~55°C	
Protection Degree	Ip54	
Detection Zone (Based on standard white inductive board, size: 29.7*29.7cm)	Factory set 28~30cm for: Sensor at the faucet body	
	Factory set 17~18cm for: Sensor built-in the aerator together	

Tools Required For Installation:

Head screwdriver

Wrench

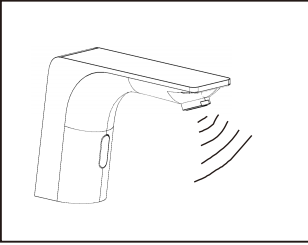
Hammer (installing plastic wall anchors to wall)

Drill bit (installing plastic wall anchors to wall)

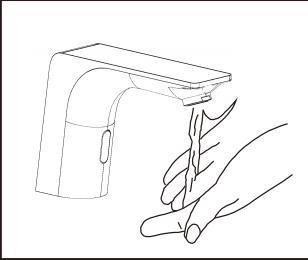
Please shut off the valve of inlet pipe before installation.

Note: We don't supply inlet pipe. Before installing Control module assembly, please check your inlet pipe whether it could be connected to the deck enough.

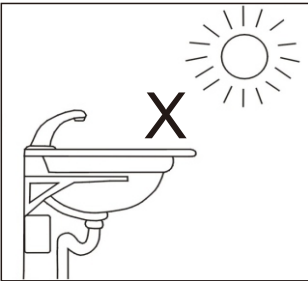
Direction for Use



Water flows out when you enter into the detection zone and stops immediately once leaving. If flow water continuously 60 seconds, it will stop automatically. If need to flow water again, please move hands out detection zone, and enter again.

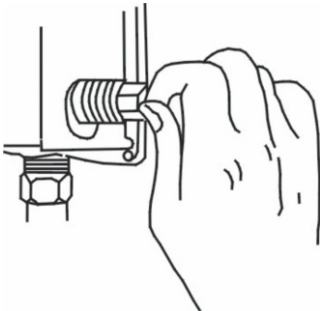


Please choose standard single hole basin, and protect sensor cable from basin's hole, which cannot warp and break.

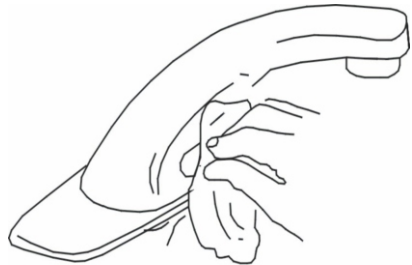


Please clean water supply pipe before connection to avoid blocking filter screen.

Please avoid strong light and sun shine facing to sensors.

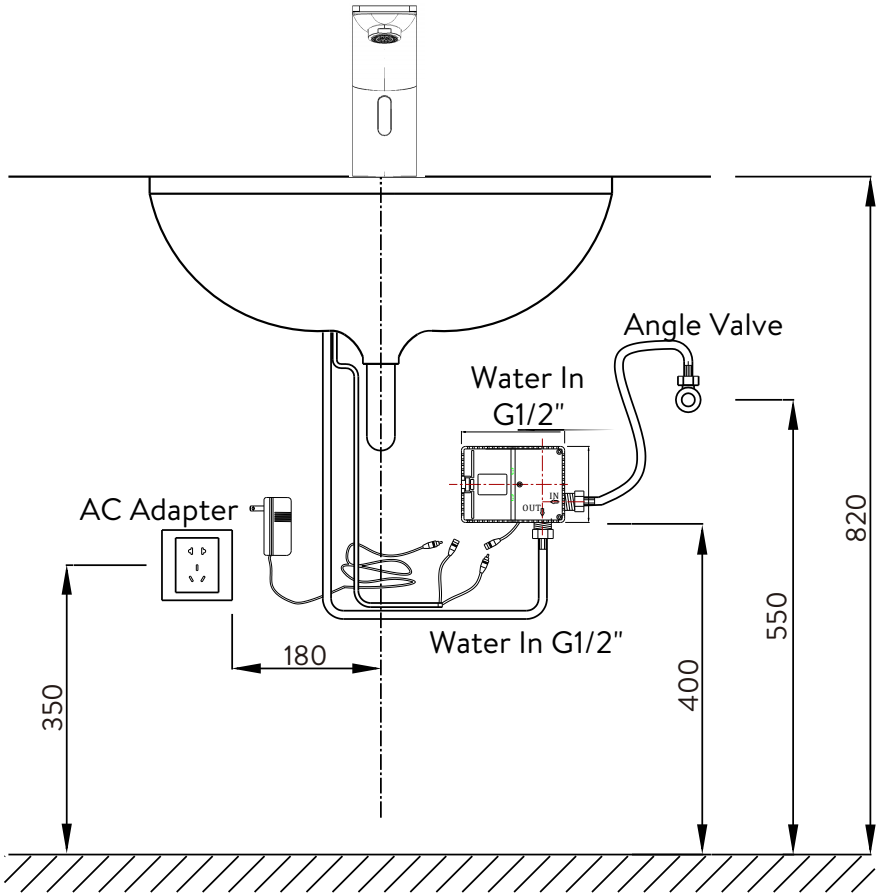


(Solenoid Screen Filter Cleaning)



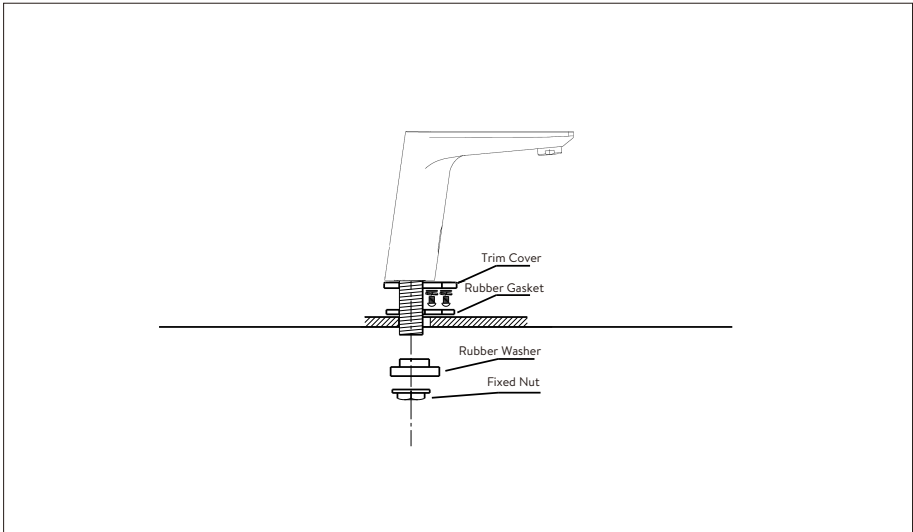
(Sensor Eye Clearing)

Installation Instruction



Step 1-Install faucet spout and trim plate

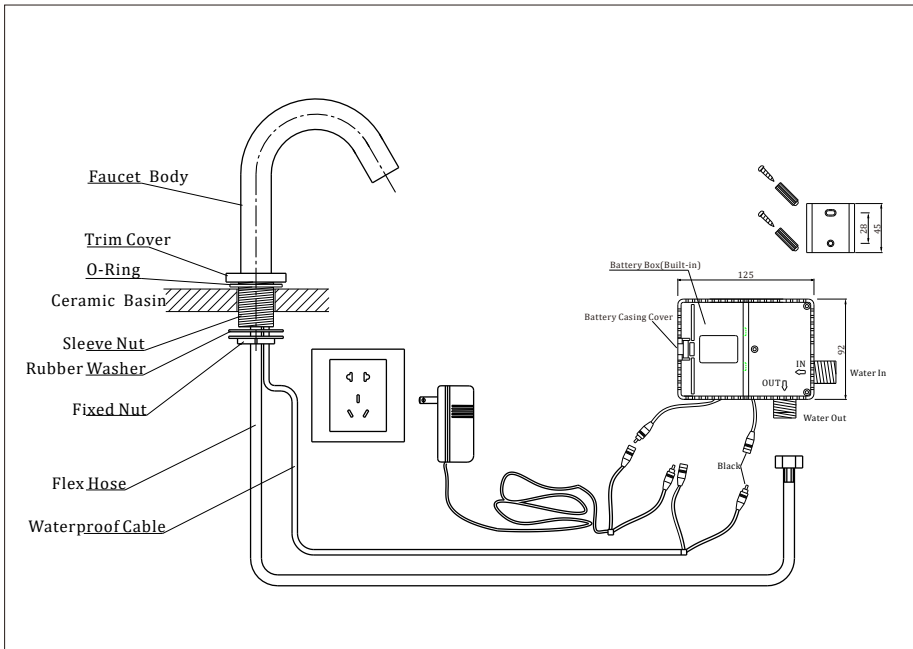
Note: The faucets have self-adjustable sensor eye, the step of adjustment sensor distance is only for reference of customer's special requirements.



Step2- Install control module assembly

Before install Control module assembly, please check the place of deck and installation place of Control module assembly. If confirmed, please put the Control module assembly onto the wall first, and use drill bit to anchor the four holes.

- 1.Using 6mm drill bit follow the four anchors to drill four holes into wall.
- 2.Using hammer knock the four plastic wall anchors supplied into wall.
- 3.Installing Control module assembly to wall, knock four self-tapping screws into four plastic wall anchors. Then the Control module assembly is installed onto wall.



Step3-Connect flex hose to solenoid valve

Use wrench to connect the free end of the flex hose to the outlet side of the solenoid valve.

Step4-Connect cable

1. Connect the free end of fiber optic cable to the Control module assembly.
2. Thread the connector cap with nut onto the Control module assembly to secure the connection.

Note: Please keep the sensor plastic cable clean and dry when install it, in order to keep the machine workable.

Note: When installation is finished, please use a small piece of soft and dry cloth to wipe away the “sensor eye” slightly.

Step5-Battery installation

If the batteries are installed before the fiber optic cable has been connected to the Control module assembly, the faucet will not properly set the sensing range for the sink on which it has been installed.

Loosen the cap of control module assembly with head screwdriver, and loosen the cap of battery compartment. To ensure proper operation, inset four (4) new AA size alkaline batteries. Check that the orientation of each battery matches the positive (+) and negative (-) symbols shown in the bottom of the battery compartment. Make sure that spout is properly centered and that no objects are in the sink. Close the cap of battery compartment and cap of the control module assembly follow the above steps.

Step6-Connect inlet pipe (not supplied)

Please connect inlet pipe (not supplied) to control module assembly.

Note: Please use the proper inlet pipe into diameter of inlet on solenoid valve.

Very Important: Please turn off the inlet pipe valve to install the inlet pipe.

Step 7-Turn on the inlet pipe valve

Please turn on the inlet pipe valve, to check whether water flowing and sensor distance meets your requirements. If not, Please follow the above ways to adjust the sensor distance again.

BATTERY REPLACEMENT PROCEDURE

Battery powered faucet with 4 x AA alkaline batteries can be used for 2 years at 200 cycles a day. When the batteries are low and need to be replaced, the faucet will signal you, when your hand approach the sensor location, the LED will flash red three times quickly without water out; when without object to approach the sensor location, the LED will red one time per four second. At this point we recommend battery replacement.

To replace batteries:

Note: Water supply to the faucet does not need to be turned off when replacing batteries.

Loosen the cap of control module assembly with head screwdriver, and loosen the cap of battery compartment. To ensure proper operation, inset four (4) new AA alkaline batteries. Check that the orientation of each battery matches the positive (+) and negative (-) symbols shown in the bottom of the battery compartment. Make sure that spout is properly centered and that no objects are in the sink. Close the cap of battery compartment and cap of the control module assembly follow the above steps.

Upon installation of the batteries, faucet will begin a new self-calibration procedure.

SOLENOID SCREEN FILTER CLEANING PROCEDURE

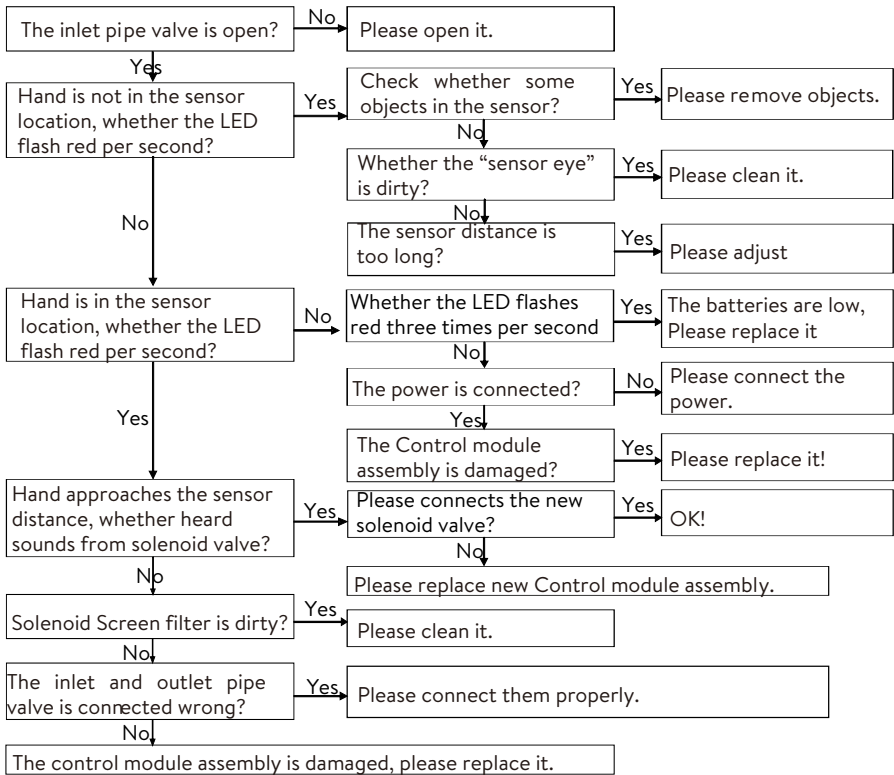
Before cleaning the screen filter, turn off the water supply at the supply stop(s). Turn off the inlet pipe. Activate the faucet to relieve any pressure in the system.

Clean the screen filter using fresh tap water. If necessary, use a small brush to clean. Use caution while cleaning to prevent damage to the solenoid screen filter.

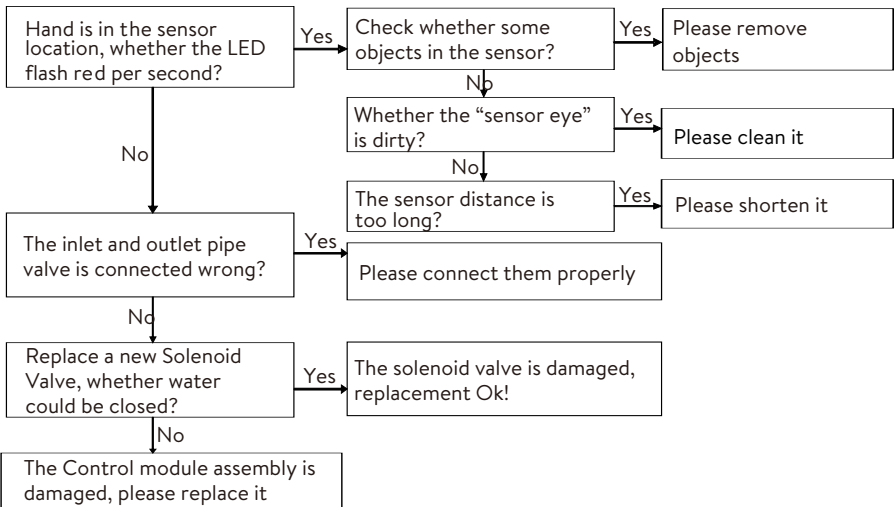
Connect the inlet pipe; turn on the water supply at the supply stop(s). Activate the faucet to purge any air from the system lines. Check for leaks and repair as necessary.

Troubleshooting Guide

Problem: Sensor is activated but faucet doesn't flow water.



Problem: Faucet does not stop delivering water?



Cleaning instruction

Dear Customers:

The electroplating on this product is finished to a high standard. To keep the product surface in pristine condition, clean with a soft damp cloth only. To avoid limescale / watermarks from building up, it is advisable to wipe the fitting dry each time it is used.

Damage to the surface caused by improper cleaning/maintenance will not be covered under guarantee.

On no account should any bathroom cleaner be used on this product as these can contain acids that are aggressive/corrosive on finished surfaces!

AQUAZONE

QUALITY PLUMBING SOLUTIONS

Oakwell Way, Birstall
Leeds, England WF9 17LU

A member of SANIPEXGROUP