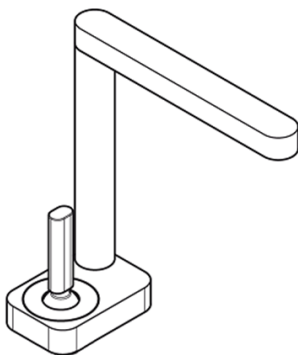


# BAGNODESIGN

EXPERTLY CRAFTED BATHROOMS

---

## General Installation Guide



### URBAN

mono basin/bidet/sink mixers – 2-hole  
concealed basin mixer – bath spout -  
concealed shower mixer & concealed  
shower mixer with diverter

A member of  SANIPEXGROUP

Please leave these instructions with the customer

## IMPORTANT PLEASE READ

Remove all packaging and check the product for missing parts or damage before starting installation.

Any alterations made to this product and fittings may infringe water regulations and invalidate the guarantee.

The Installation must comply with all Local/National Water Supply Authority Regulations/Byelaws and Building and Plumbing Regulations.

We strongly recommend that your product be installed by a reputable qualified trade's person.

### **General Installation:**

To the Installer, please read and follow this instruction carefully, as the guarantee is only valid if the product is installed as directed.

Don't rush, read the instructions first and run through them before you begin. Keep fittings together to avoid loss. Do not over tighten screws or bolts.

If the product is covered with polyethylene protective film, do not remove until installation is complete to grant maximum protection. However, remove film where any two surfaces will be in permanent contact.

Before making any inlet pipe connections, all supply pipes MUST be thoroughly flushed to remove debris.

The fitting of an in-line filter is recommended, Failure to do this could result in damage to the cartridge and components or low flow from the mixer.

The fitting of isolation/stop valves on the inlet feeds is advised for ease of maintenance.

Please leave this installation manual with the end user once the product has been installed.

### **Product Aftercare:**

We recommend cleaning with a soft damp cloth and mild soap solution. Do not use cream cleaners or cleaners containing bleach.

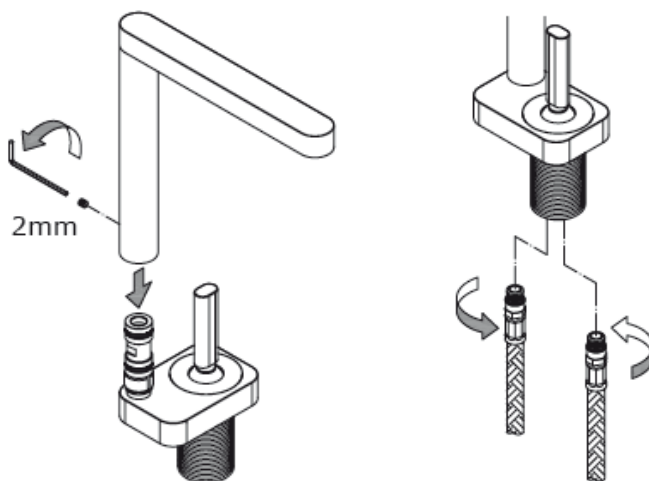
Do not scrub or scour.

Do not use abrasive cleaning agents.

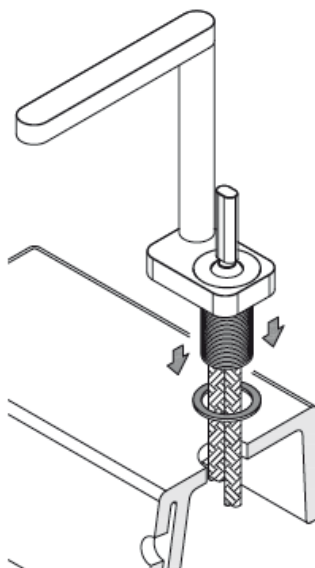
Do not use solvent based cleaners.

*This installation guide is for reference only. In case there is a discrepancy between that of the instructions and that of the actual product, the latter should be taken as standard. The rights of modification are reserved.*

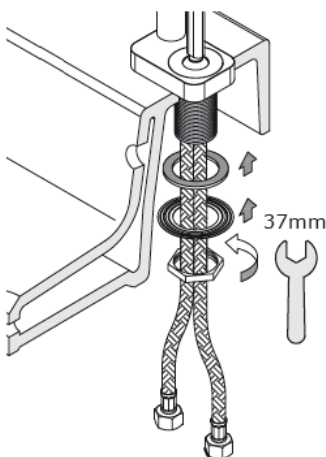
## Mono Basin/Bidet/Sink Mixer



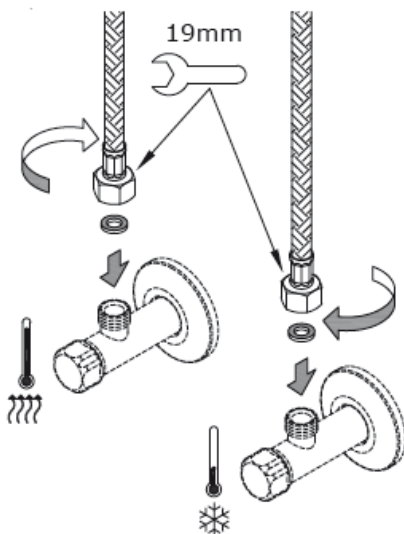
Place the spout over the outlet and tighten with the grub screw. Then insert the two flexible pipes into the mixer body.



Now place the assembly onto the basin / counter, making sure to insert the washer.



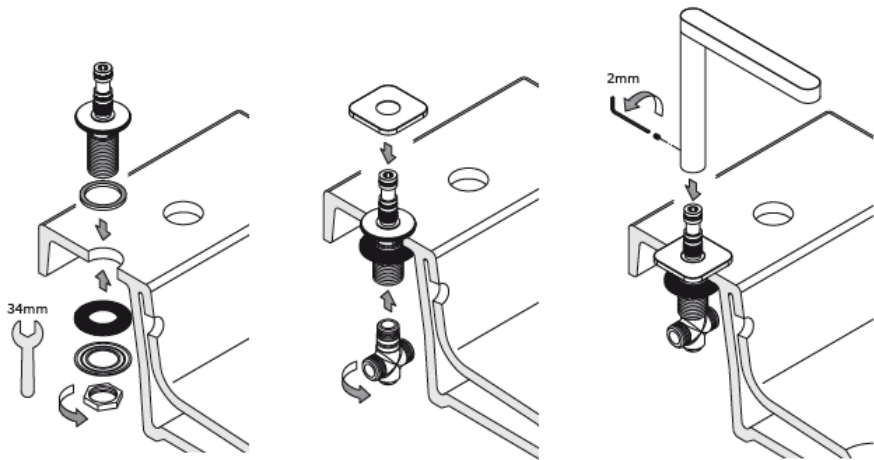
From the underside, place the 'O' ring followed by the metal washer onto the threaded rod, then tighten the nut to clamp the mixer to the basin / counter with the back nut, being careful not to over tighten.



Install the flexible pipes, onto the water supply valve. Open the water supplies and test for leaks on the connections.

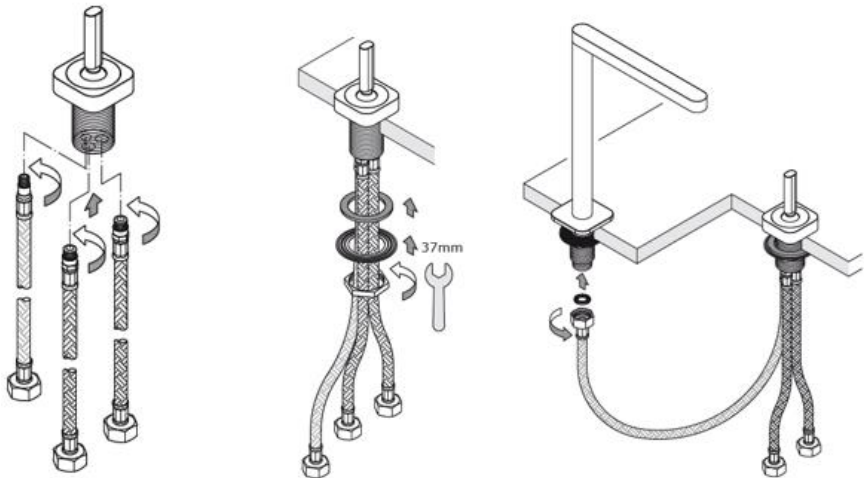
**\* Before making any inlet pipe connections, all supply pipes MUST be thoroughly flushed to remove debris. Failure to do this could result in damage to the cartridge and components or low flow from the mixer\***

## 2-Hole Basin Mixer



Install the spout body into the basin/countertop, from underneath fasten by using the rubber washer, metal washer and back-nut. After this is secure place the cover plate over the spout body.

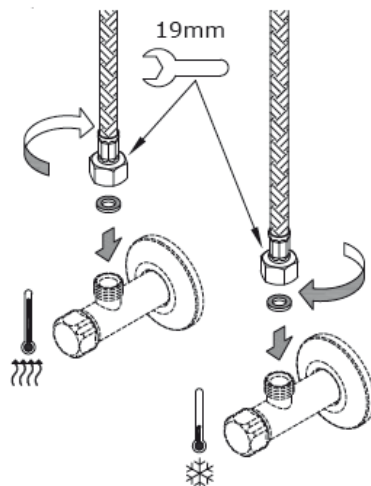
Place the spout over the spout body, align the 2 holes as shown above, then tighten the grub screw to secure.



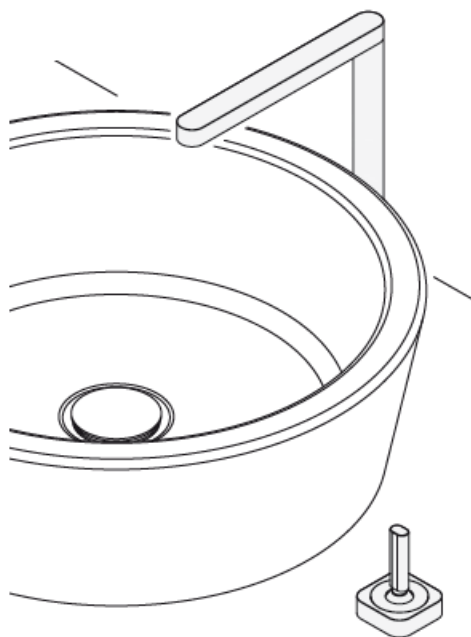
Install the hot, cold and mixed water flexible pipes into the mixer body. Then place this assembly through the basin/countertop, from underneath fasten by using the rubber washer, metal washer and back-nut.

Connect the mixer water flexible to the spout,

*Note: the distance between mixer body and spout is governed by the length on the mixed water flexible, please check before installation.*



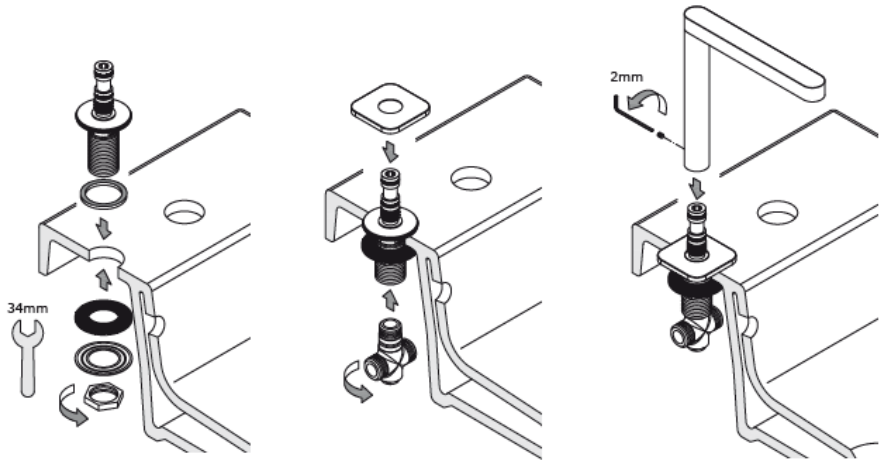
Install the flexible pipes, onto the water supply valves



Open the water supplies and test for leaks on the connections.

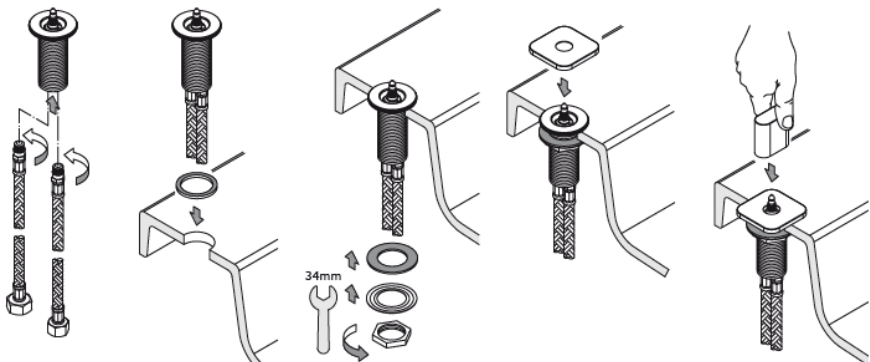
**\* Before making any inlet pipe connections, all supply pipes MUST be thoroughly flushed to remove debris. Failure to do this could result in damage to the cartridge and components or low flow from the mixer\***

### 3-hole Basin Mixer

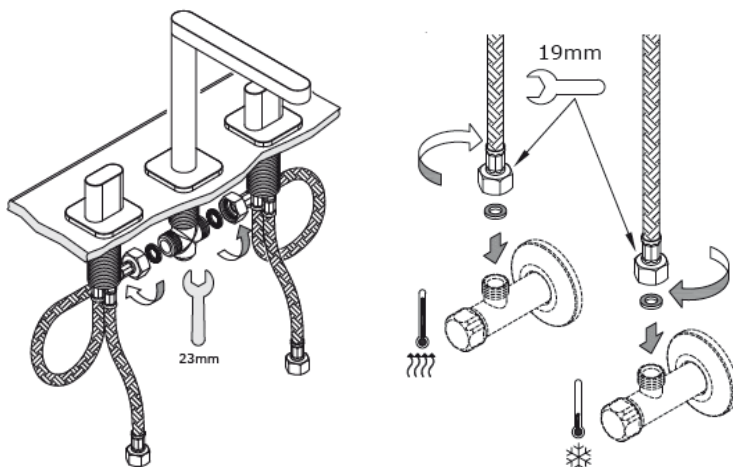


Install the spout body into the basin/countertop, from underneath fasten by using the rubber washer, metal washer and back-nut. After this is secure place the cover plate over the spout body.

Place the spout over the spout body, align the 2 holes as shown above, then tighten the grub screw to secure.



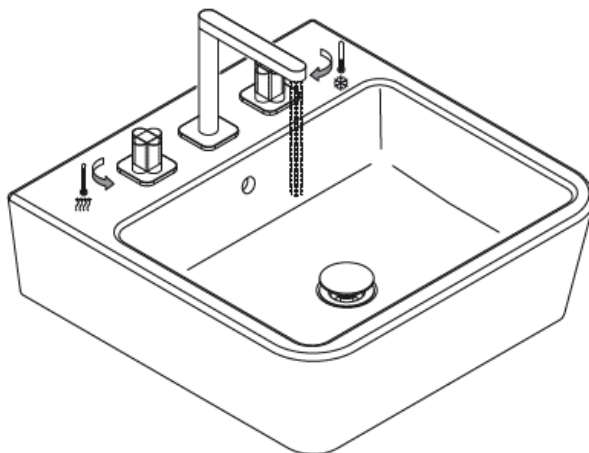
Install the flexible pipes into the valve body. Then place this assembly through the basin/countertop, from underneath fasten by using the rubber washer, metal washer and back-nut. Place on the base plate, then press on the handle, repeat for the other valve.



Connect the valve water flexibles to the spout,

*Note: the distance between valve body and spout is governed by the length on the water flexibles, please check before installation.*

Install the flexible pipes, onto the water supply valves

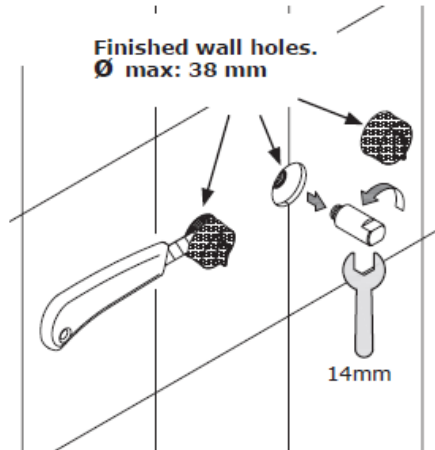
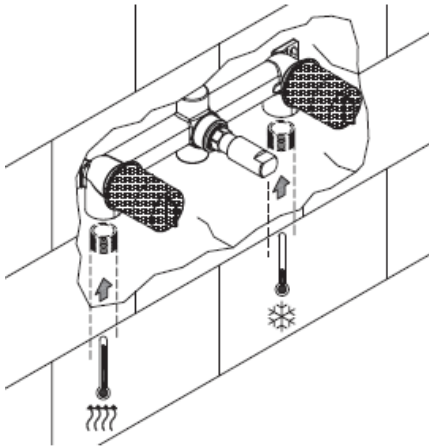


Open the water supplies and test for leaks on the connections.

**\* Before making any inlet pipe connections, all supply pipes MUST be thoroughly flushed to remove debris. Failure to do this could result in damage to the cartridge and components or low flow from the mixer\***

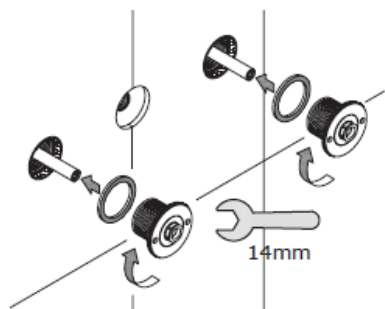
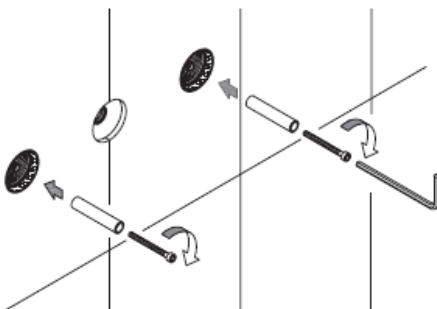


### 3-hole Concealed Basin Mixer

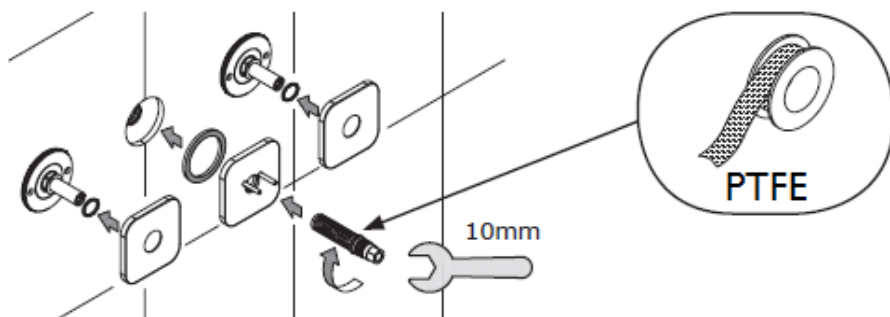


Install the mixer housing at a depth so that the finished surface is no more than the Max distance markings shown in the diagram. Connect the Hot and Cold water supplies to the mixer and cap off the outlet connection, pressure test to check for leaks at the connections.

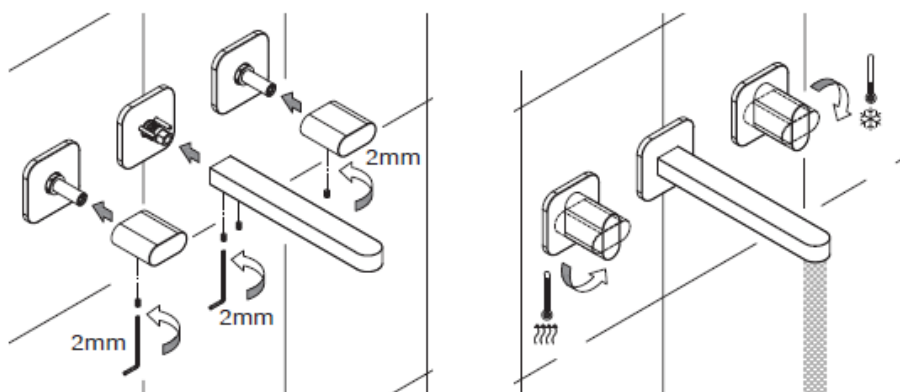
Remove the cap and place on the protection covers.



Install the spindle extensions and tighten with the screws and Allen key, Place the shrouds over and tighten into the mixer housing.



Wrap the required amount of PTFE tape onto the spout connection, place through the back plate and tighten into the mixer housing, place the 2 back plates over the spindle extension.

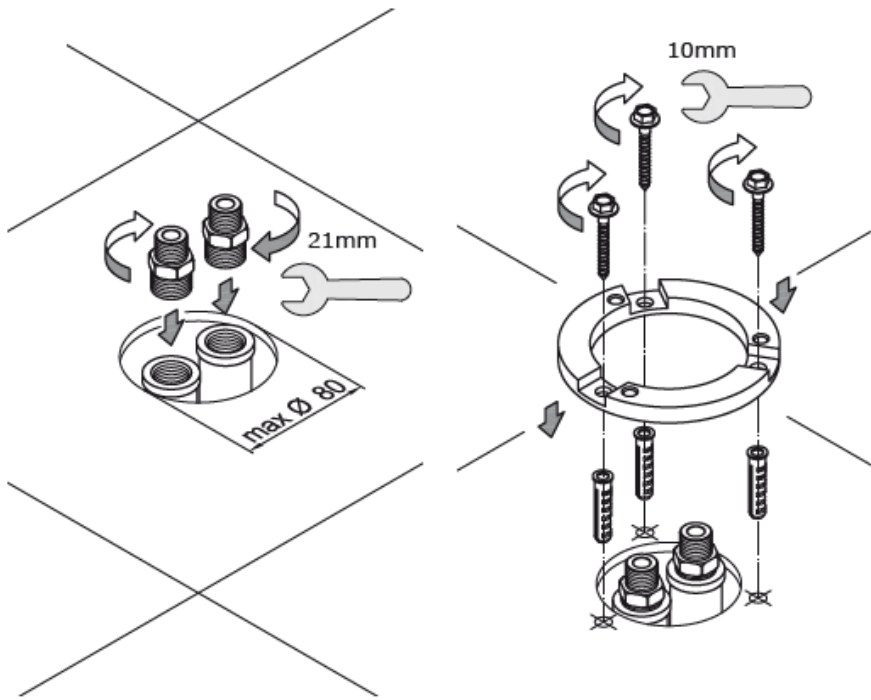


Install the 2 handles and the spout and tighten from the underside with the grub screws and Allen key.

Open the water supplies and test.

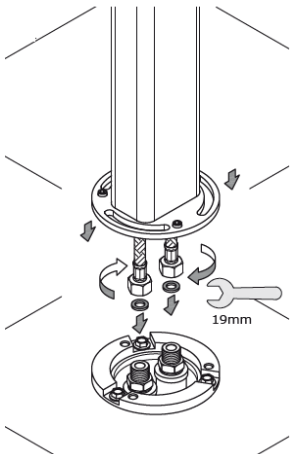
**\* Before making any inlet pipe connections, all supply pipes MUST be thoroughly flushed to remove debris. Failure to do this could result in damage to the cartridge and components or low flow from the mixer\***

## Floor Mounted Basin Mixer



***The mixer requires pre-installed pipework terminating with ½" female sockets at finished floor level.***

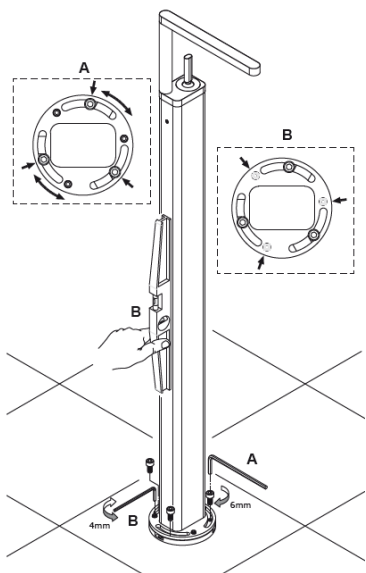
Add the required amount of PTFE tape onto the ½" connectors and fasten into the floor sockets. Mark and drill the base plate, making sure not to damage the water supply pipes. Fasten the the base plate to the floor with the fixings provided.



***2 persons made be required***

Hold/support the mixer and connect the flexible tubes onto the floor sockets.

At this time it is advised the pressure test to check for any leaks



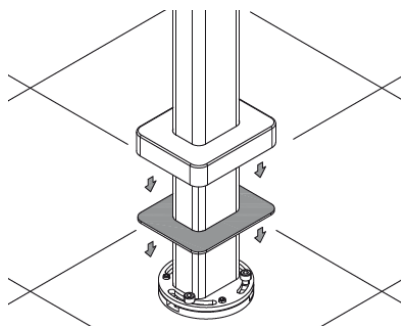
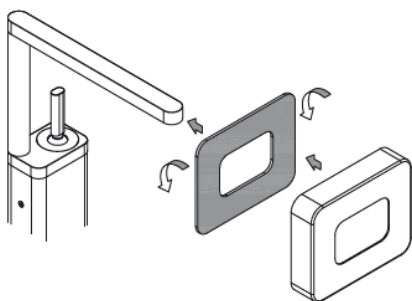
**A**

Install the 3 fixing bolts into the base plate

**B**

Using a level adjust the the base plate to ensure the mixer is up-right.

Once level tightly secure.

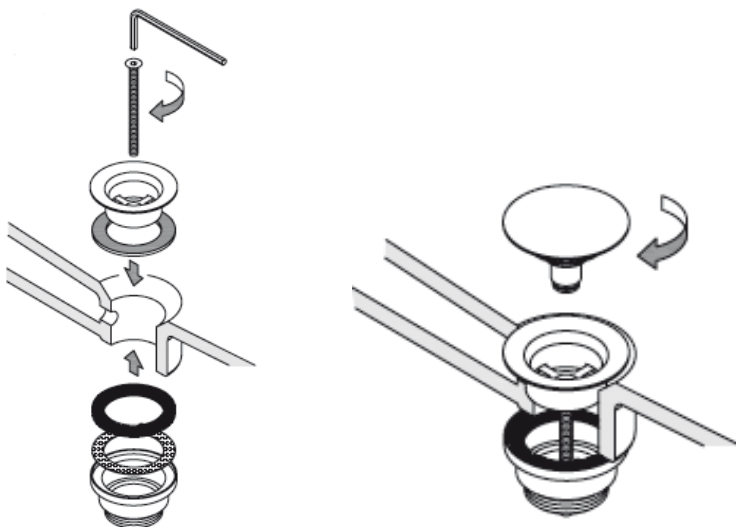


Carefully place the washer and base cover over the mixer and slide down to the base of the mixer

Open the water supplies and test.

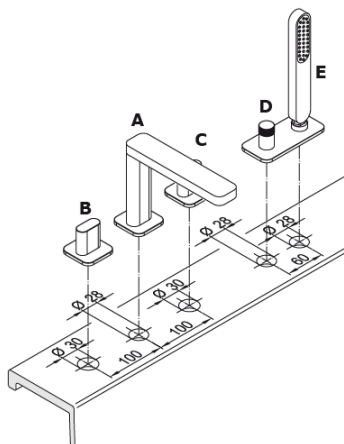
**\* Before making any inlet pipe connections, all supply pipes MUST be thoroughly flushed to remove debris. Failure to do this could result in damage to the cartridge and components or low flow from the mixer\***

## Push Type Basin Waste



Install the waste waste housing as per the above, being careful not to over tighten. Then screw in the push type waste into the housing. And test for functionality.

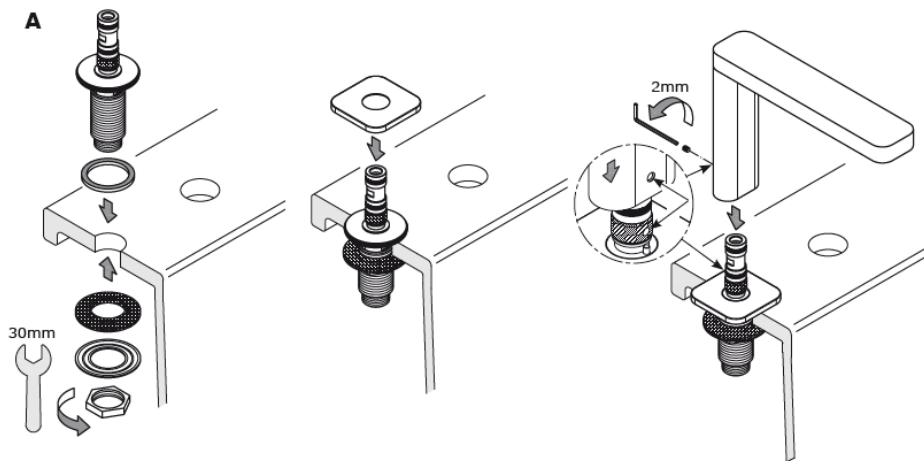
# 5-hole Deck Mounted Bath Mixer



Assemble the parts as per the diagram

Ensure that the mains water supply is turned off before installation

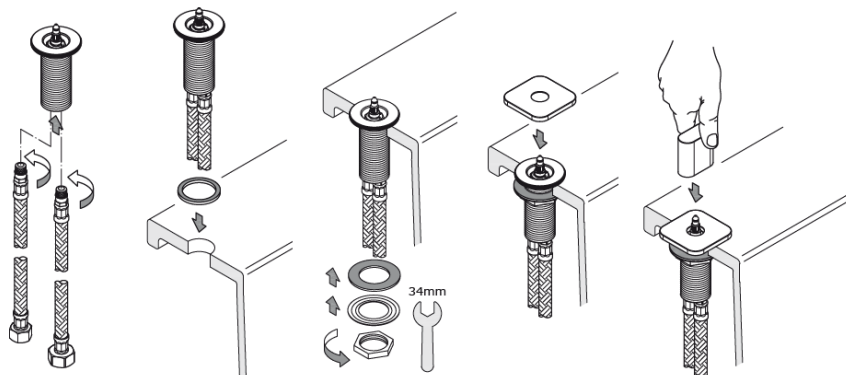
Arrange the fixing surface to the dimensions shown in the diagram



Install the spout body into the basin/countertop, from underneath fasten by using the rubber washer, metal washer and back-nut. After this is secure place the cover plate over the spout body.

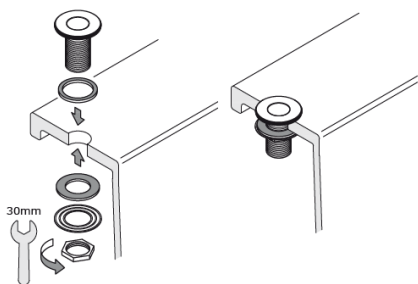
Place the spout over the spout body, align the 2 holes as shown above, then tighten the grub screw to secure.

**B/C**

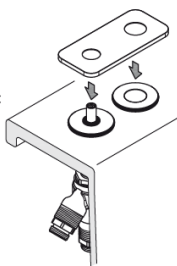


Install the flexible pipes into the valve body. Then place this assembly through the basin/countertop, from underneath fasten by using the rubber washer, metal washer and back-nut. Place on the base plate, then press on the handle, repeat for the other valve. Follow the same process for the diverter D

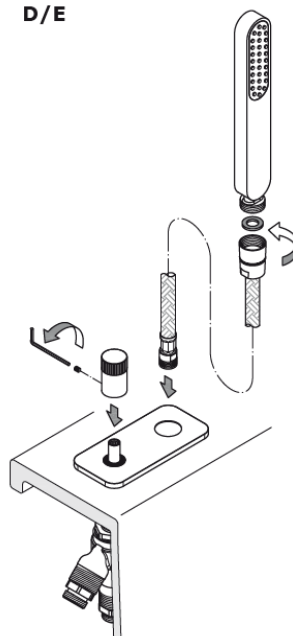
**E**



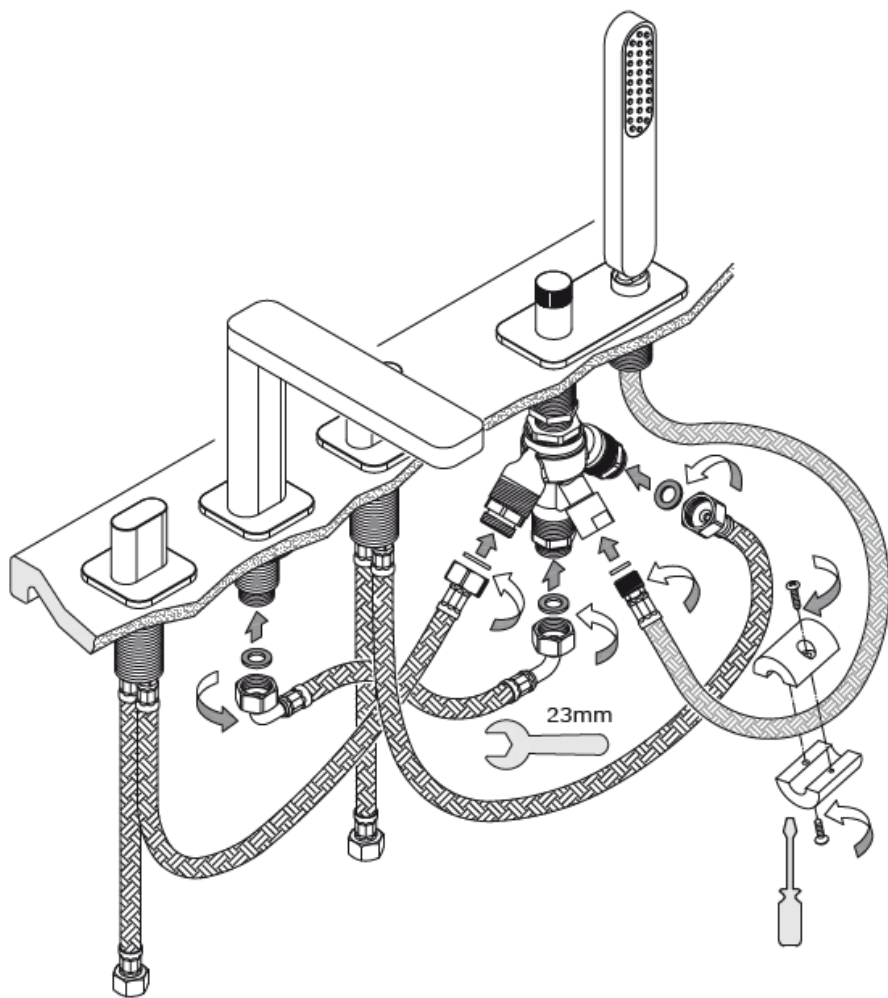
**D/E**



**D/E**



Install the handshower holder as directed above, then place the base plate over the diverter and handshower holder and click into place. Attach the shower hose to the handshower and feed the hose through the handshower holder.



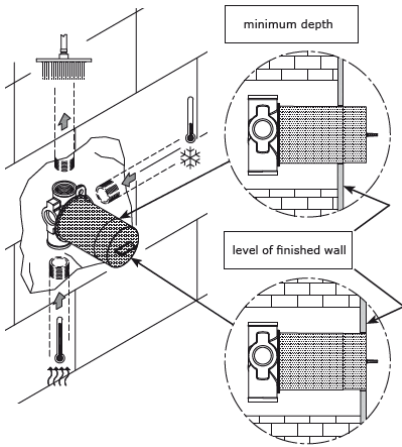
Install the valve flexibles into the right and left side of the diverter valve, install one hose from the bottom of the diverter valve to the spout. Install the handshower hose into the angled female connection. Please make sure to use 'O' rings on all connections. Lastly attach the hose weight to the shower hose.

Open the water supplies and test.

**\* Before making any inlet pipe connections, all supply pipes MUST be thoroughly flushed to remove debris. Failure to do this could result in damage to the cartridge and components or low flow from the mixer\***



## Concealed Shower Mixer

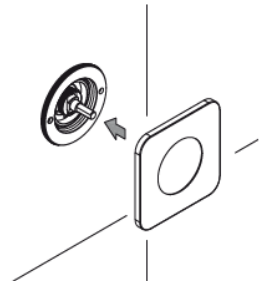
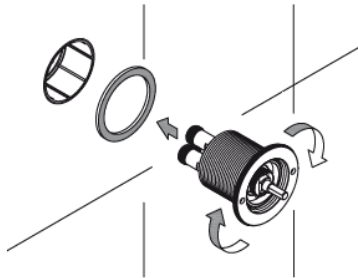
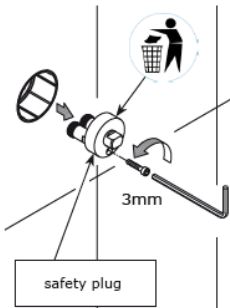


Install the mixer housing at a depth so that the finished surface is between the Min/Max distance markings shown on the diagram.

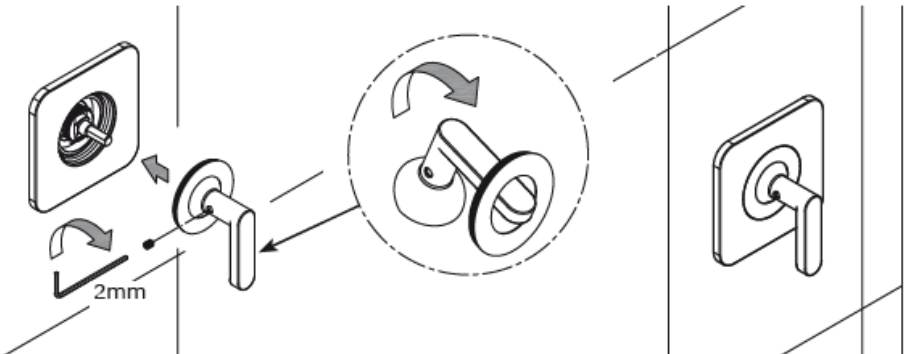
Please note that the Hot water supply is from the bottom and cold is from the right.



After applying the finished surface cut back the protection cap.

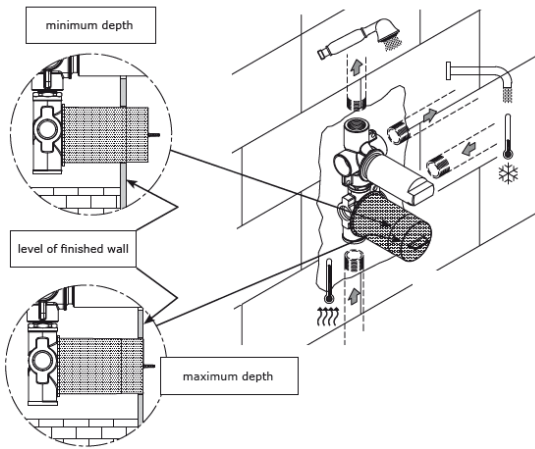


Remove the safety plug using the Allen key, insert the cartridge and rotate the the shroud until tight. Place the face plate over the shroud.



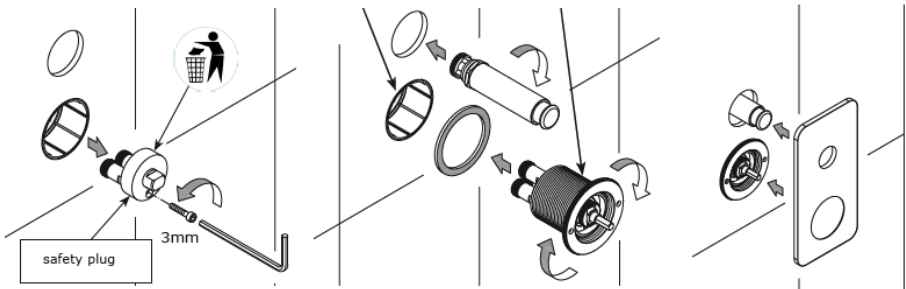
Loop the ring over the handle and insert on to the spindle, tighten using the Allen key.

## Concealed Shower Mixer with Diverter

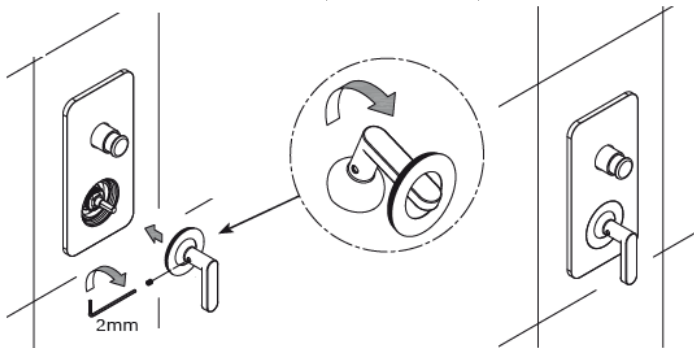


Install the mixer housing at a depth so that the finished surface is between the Min/Max distance markings shown on the diagram.

Please note that the Hot water supply is from the bottom and cold is from the right.



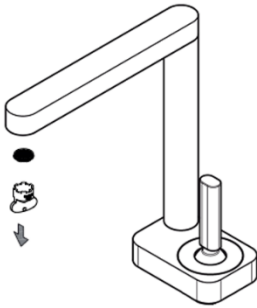
Remove the safety plug using the Allen key, insert the cartridge and rotate the the shroud until tight, install the diverter and place the face plate over the shroud.



Loop the ring over the handle and insert on to the spindle, tighten using the Allen key.

**\* Before making any inlet pipe connections, all supply pipes **MUST** be thoroughly flushed to remove debris. Failure to do this could result in damage to the cartridge and components or low flow from the mixer\***

## MAINTENANCE

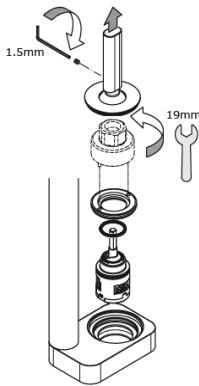


Periodically the aerator will need to be cleaned.

Using the key provided remove the aerator from the spout

Flush the aerator under water to remove the small debris.

Install the aerator back into the tap and re-tighten.

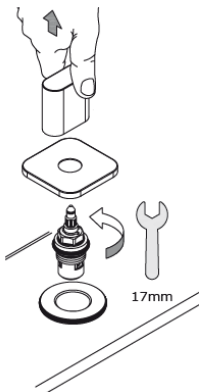


### **Mono Mixer Cartridges:**

To remove the cartridge, use an Allen key to loosen the grub screw. This will allow the handle to be removed.

Using the cartridge tool to loosen the cartridge back nut, this will allow the cartridge to be taken out and replaced. Be careful not to lose any of the assembly parts.

When inserting the new cartridge, make sure the cartridge locating points align, then re-assemble as above.



### **1/4" Turn Mixer Cartridges:**

To remove the cartridge, pull the handle upward.

Remove the base plate

Carefully with a spanner, loosen the cartridge, this will allow the cartridge to be taken out and replaced. Be careful not to lose any of the assembly parts.

Then re-assemble as above.

# BAGNODESIGN

EXPERTLY CRAFTED BATHROOMS

---

---

---

---

---

---

---

---

---

---

---

---

---

Oakwell Way, Birstall  
Leeds, England WF9 17LU

A member of  SANIPEXGROUP