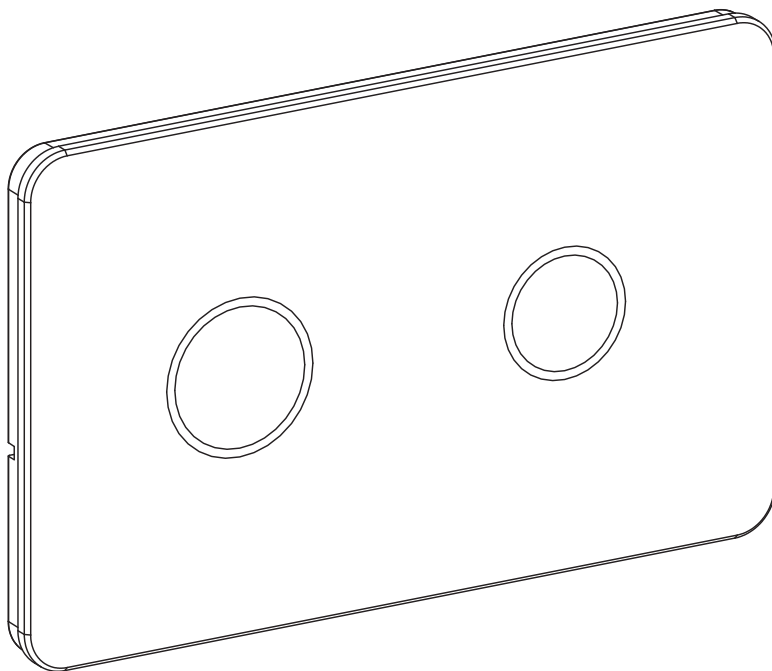


BAGNODESIGN

EXPERTLY CRAFTED BATHROOMS

Installation Guide



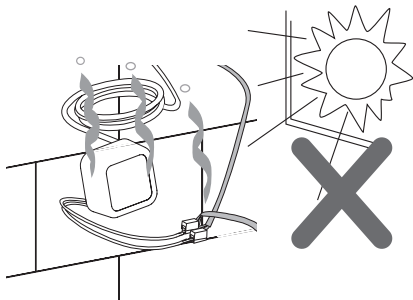
BDP-A709-0280-XX
AXENT TOUCHLESS DUAL FLUSH PLATE

A member of **SANIPEXGROUP**
www.sanipexgroup.com

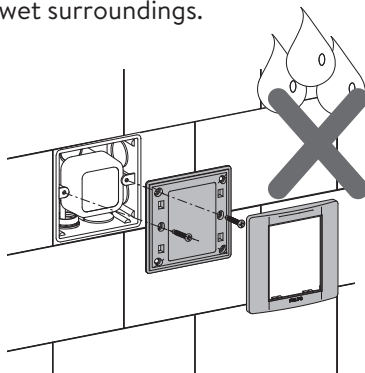


SENSOR PUSH PLATE

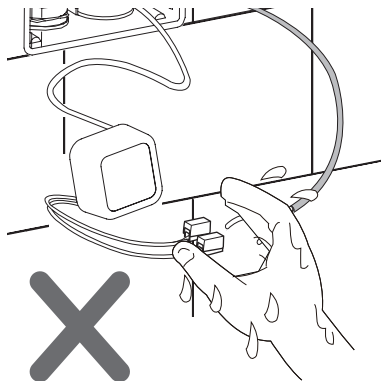
The adaptor can't be installed exposed, especially under the sunlight.



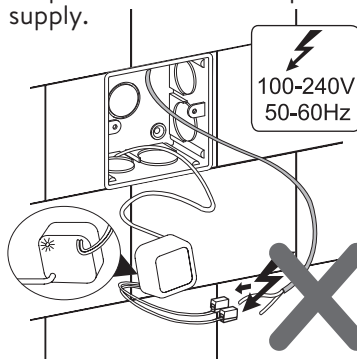
The adaptor can't be installed in wet surroundings.



Operation with wet hands is forbidden.

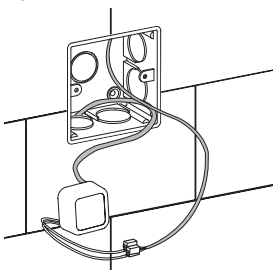


Any operation is disallowed when adaptor is connected to power supply.

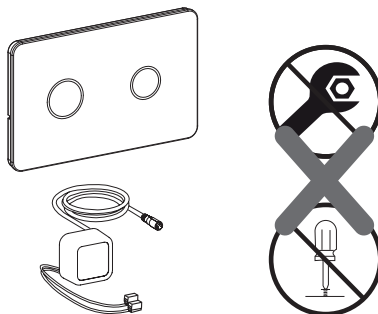


The size of cable should be 1.0-2.5mm² and the wire connector should be connected firmly.

CAUTION:
Be sure not to place adaptor in an inflammable box (for example a wooden box).

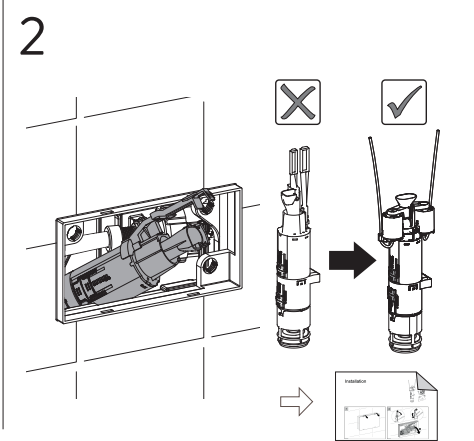
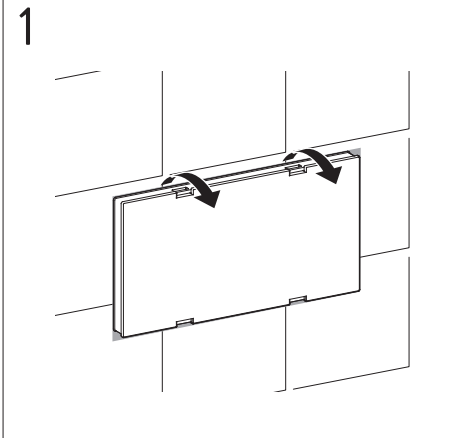
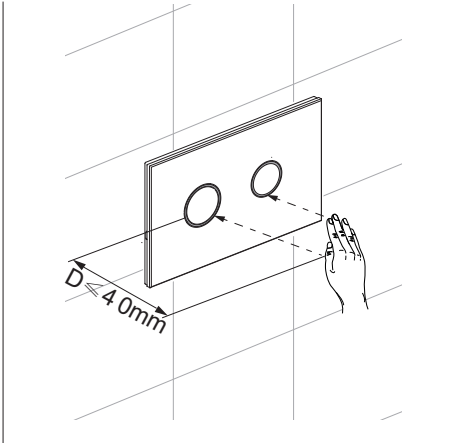
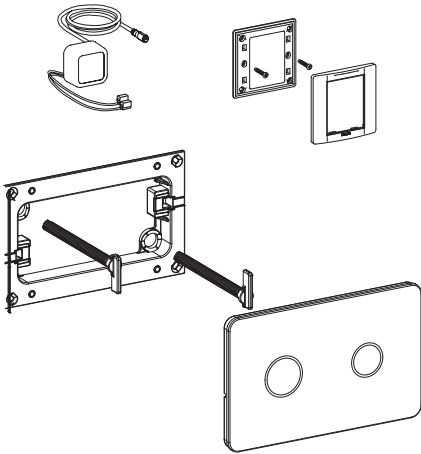


Disassembly of the product is forbidden.

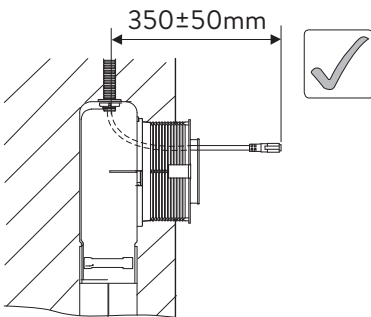
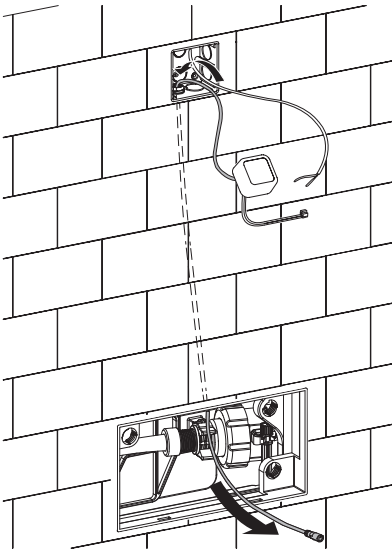




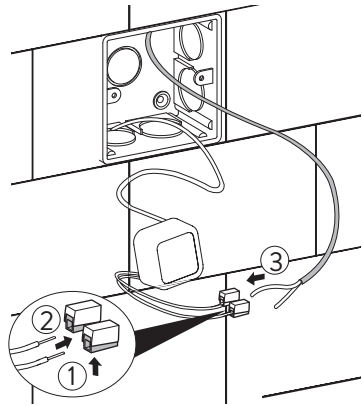
SENSOR PUSH PLATE



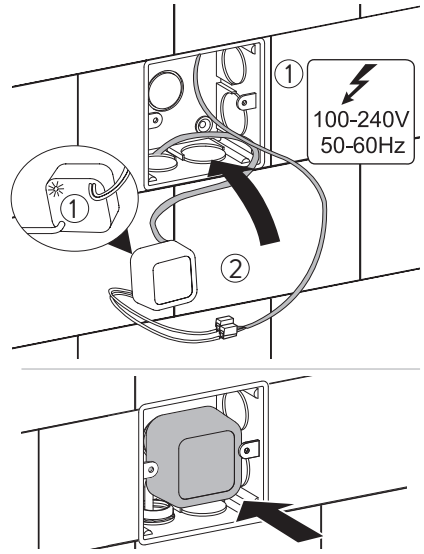
3



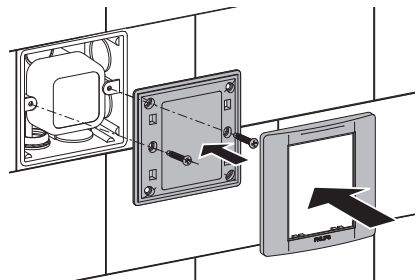
4



5

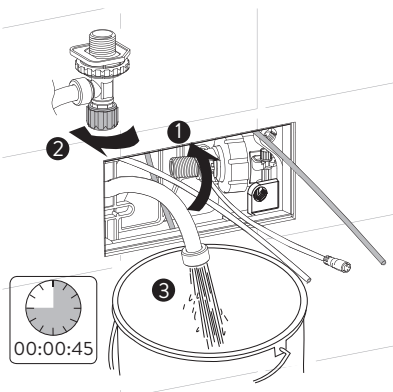


6

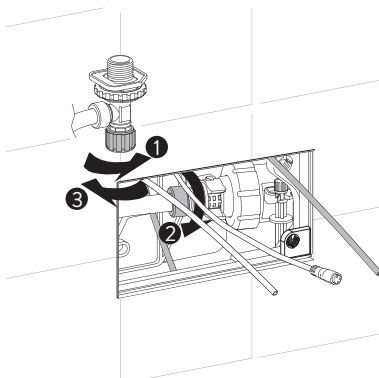


SENSOR PUSH PLATE

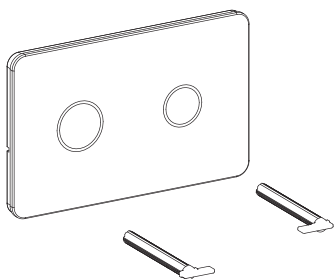
7



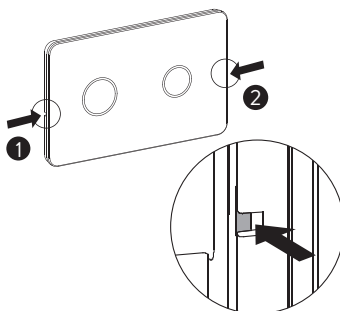
8



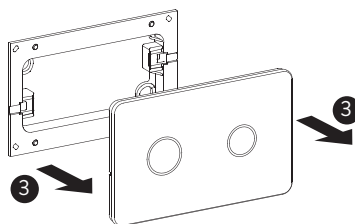
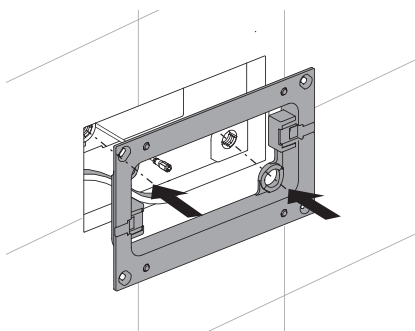
9



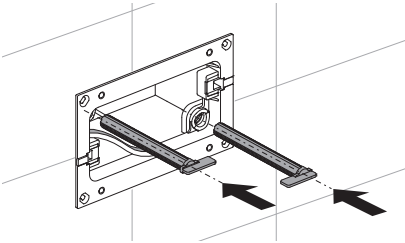
10



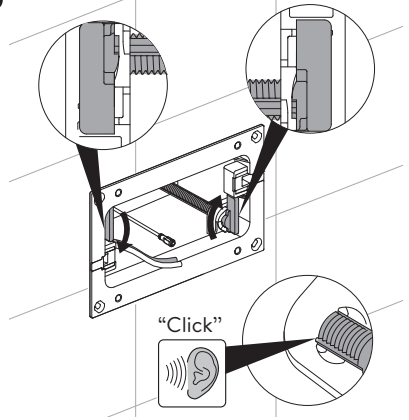
11



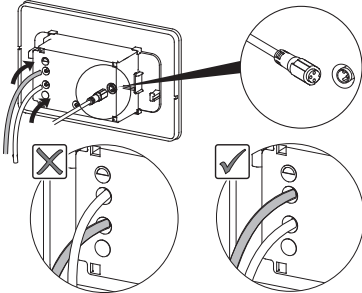
12



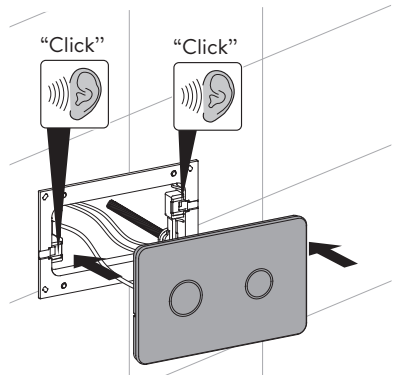
13



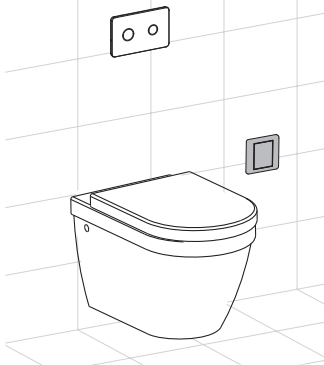
14



15



16



17

