

ALISEO

BLACK MAMBO 1875

HAARTROCKNER. HAIR DRYER.



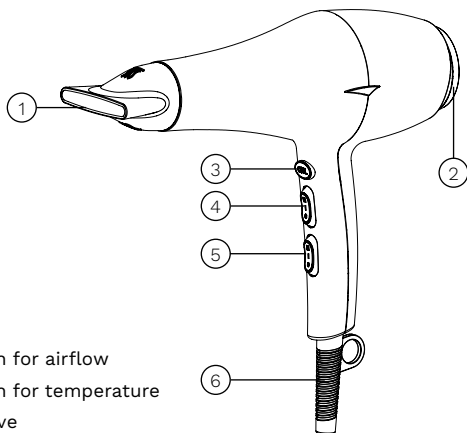
220-240 V~ 50/60 Hz 1875 W



USER MANUAL.



Read all instructions before use.



DESCRIPTION

1. Styling nozzle
2. End cover
3. Cold air button
4. Variable speed switch for airflow
5. Variable speed switch for temperature
6. Bend protection sleeve

HOW TO USE YOUR HAIR DRYER

1. Cold Air Function: Press and hold button (3) for a stream of cold air.
2. Adjusting the desired airflow (4):
 - Position 1: Off
 - Position 2: Half power for gentle drying
 - Position 3: Full power for fast drying
3. Adjusting the desired temperature (5):
 - Position 1: Low temperature for very gentle drying
 - Position 2: Medium temperature for gentle drying and styling
 - Position 3: High temperature for fast drying and intensive styling
4. If your hair dryer malfunctions or stops operating, turn it off immediately and let it cool down.
5. Always unplug the device after use.

SAFETY INSTRUCTIONS



Safety instruction according to EN 60335-2-23: These appliances can be used by children aged from 8 years and above and by people with reduced physical, sensory or mental capabilities or lack of experience and/or knowledge if they have been given supervision or instruction concerning the use of the appliance and understand the risks involved. Children must not play with the appliance. Cleaning and user maintenance must not be carried out by children unless they are supervised.

Safety instruction according to IEC standard: This appliance is not intended for use by people (including children) with reduced physical, sensory or mental capabilities, or lack of experience and/or knowledge, unless they have been given supervision or instruction concerning use of the appliance by a person responsible for their safety. Children should be supervised to ensure that they do not play with the appliance.



WARNING: Do not use this appliance near bathtubs, shower trays or other devices containing water. If the hairdryer is used in a bathroom, unplug it after use, as proximity to water is a danger, even if the hairdryer is switched off.



Do NOT wrap the cable around the hairdryer.

For appliances with a wall attachment:

The hairdryer must be fixed in a way that the part held in the hand is out of reach of a person using a bath or shower when the cord is fully extended.

For greater safety, we recommend that you install a residual current device with a rated tripping current of no more than 30 mA in the installation. If you have any questions, please contact a qualified electrician.

If the mains cable is damaged, it must be replaced by the manufacturer, its customer service department or a similarly qualified person to avoid danger.

Do not immerse the appliance in water, do not clean it when wet and do not use it with wet hands. Never use hairspray when the appliance is switched on. There is a risk even when the hairdryer is switched off, so unplug it after use. The air intake grid and outflow grid must not be covered.

Mains voltage

Only connect to 220-240 V alternating current.

This appliance complies with the EC directives:

Low Voltage Directive: 2014/35/EU

EMC Directive: 2014/30/EU

The appliance is not suitable for continuous use.**Overheating protection**

The appliance switches off automatically in the event of thermal overload. If this happens, set the switch to 0 and eliminate external causes of overheating. The cooled appliance will be ready for use again in a few minutes. Defective hair dryers may only be repaired by a qualified electrician.

CLEANING

In general, the mains plug must be disconnected, or the mains switch on the wall bracket must be set to "OFF". Wipe the appliance with a damp cloth. Clean the air intake grid regularly.

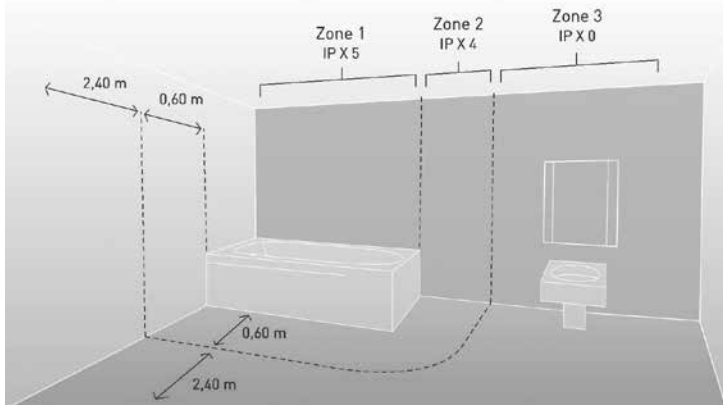
DISPOSAL

At the end of its life, this product must be taken to a collection point for the recycling of electrical and electronic equipment.



SAFETY DISTANCES

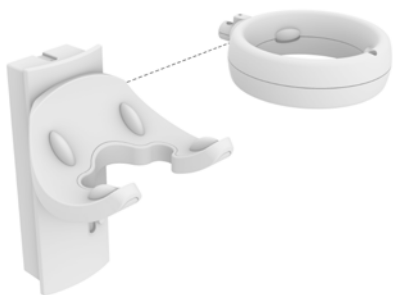
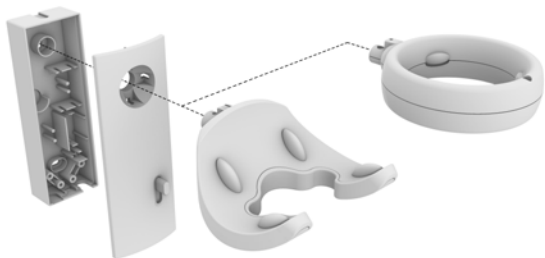
Electrical connections must be 60 cm away from showers and bathtubs and at least 120 cm away from shower heads.



ASSEMBLY INSTRUCTIONS

pages 38-42

MOUNTING. MONTAGE.

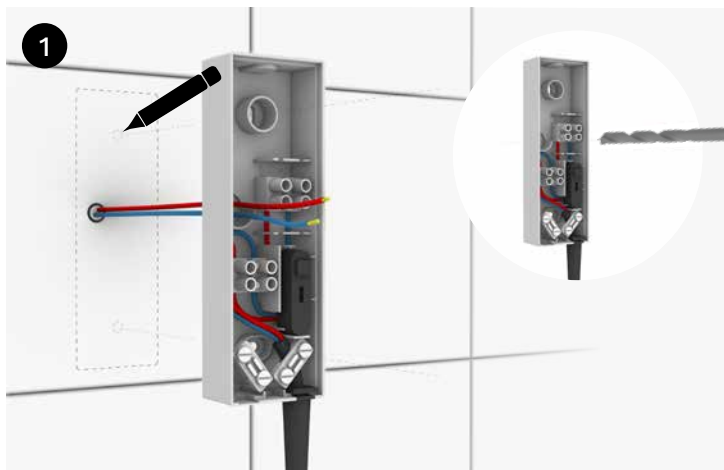


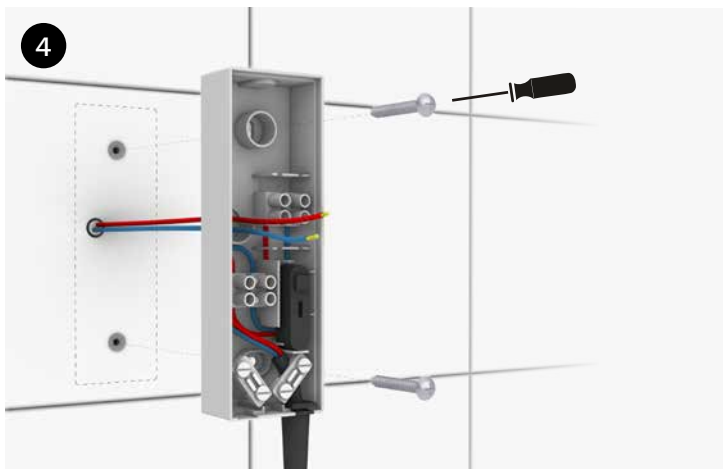
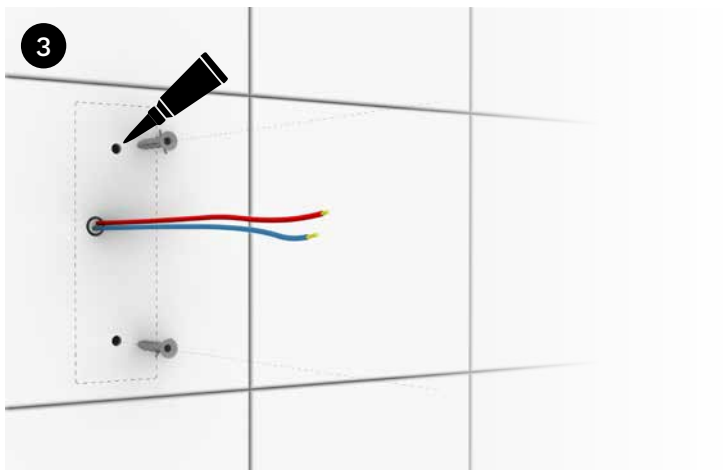
2 X



2 X



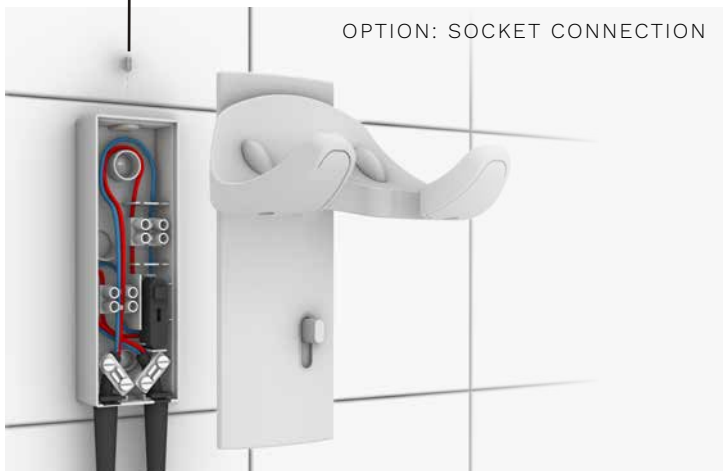








OPTION: SOCKET CONNECTION



7





ALISEO

ALISEO GmbH • Leutkirchstraße 63 • 77723 Gengenbach • Germany

+49 (0) 7803 60279-0

info@aliseo.de

www.aliseo.de