

ALISEO

STEAMO

DAMPFGLÄTTER. STEAMER.

Art.

160250

160251

160252



230 V~ 50/60 Hz 1000 W

CE

USER MANUAL.

DE

EN

FR

IT

ES

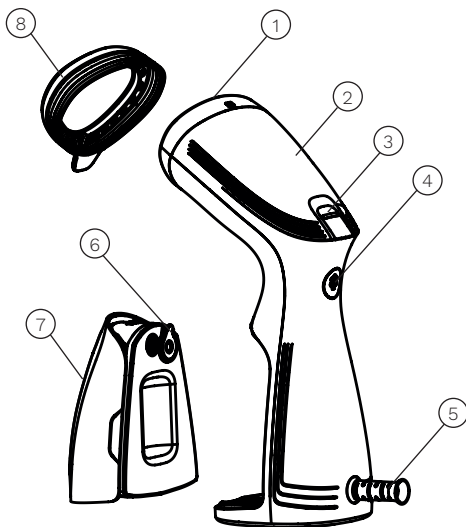
TR

RU

ZH



Read all instructions before use.



DESCRIPTION

1. Nozzle / Heating plate
2. Body
3. Temperature indicator light
4. Steam boost button
5. Power Cord
6. Filling Cap
7. Water Tank
8. Brush

SAFETY INSTRUCTIONS



Before using this product, please read the instructions and illustrations in detail.

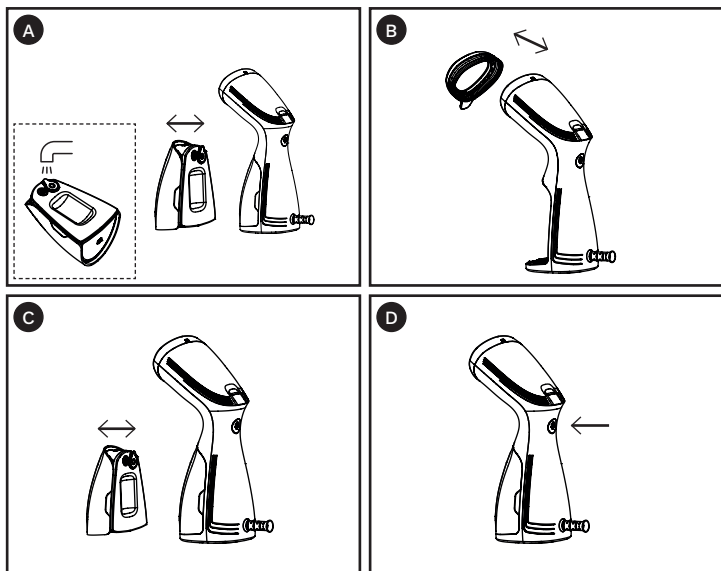
- Before first use, check if the voltage indicated on the model plate of this product matches the voltage in your home.
- Do not use the product if it is damaged in any way.
- Do not forget to switch off the steam function and remove the plug from the socket after every ironing process or if ironing is temporarily interrupted.
- Please be careful not to let children touch the heated steam brush and pull its power cord.
- Do not immerse the steam brush in water.
- During the first use, certain parts of the steam parts of the steam straightener due to the oils applied (harmless) but this will disappear completely after a short time.
- Do not pour vinegar or other descaling cleaning agents into the water tank.
- Also, do not use chemically treated water.
- Keep the power cord away from the heated panel of the steam brush.
- Regularly check that the power cord of this product is in good condition.
- The steam emitted by the steam brush is very hot and dangerous. To avoid burns, do not direct the steam towards a person's body.
- When the steam brush is powered on, the user must not leave it unattended.
- Please handle this product properly and keep it out of children's reach for play.
- If there is any damage to the power cord of this product, it should only be replaced by the manufacturer or an authorized service center to avoid danger.
- Do not use high-power appliances on the same circuit to prevent overloading and potential hazards.

PLEASE NOTE!

Failure to follow the instructions provided above will invalidate your device's

warranty.

INSTRUCTIONS



Water Addition (Image A + C)

1. Grasp the water tank on both sides with your fingers and pull outward to detach the water tank (7).
2. Tilt the water tank, open the filling cap (6), add water, and ensure it does not exceed the MAX line.
3. Reattach the water tank (7) back into the device, wipe dry the exterior of the water tank, and make sure to empty any remaining water after use.
4. Please use tap water that is free of impurities and oil. If the water quality is too hard, it is recommended to boil the water first, let it cool down, filter out impurities, or distill it. Do not use water that has been treated with chemical cleaning agents.

Steam Ironing (Image D)

1. Connect the handheld steam brush to electricity and insert the plug into an outlet of the specified voltage. The temperature indicator light (3) will display red and flash, indicating it is in preheat mode. Wait for the light ring to stop flashing, which means the heating is complete, please be patient for 25s.
2. Ensure that there is enough water in the water tank (7) and place the steam brush upright.
3. After the red light is long on, press 1 down the steam boost button (4), at this time the light ring is displayed as a blue cycle, blue is the steam gear, press the steam boost button (4) again, you can switch to a small gear, the temperature indicator light (3) becomes red and blue. Press the steam boost button (4) again to stop working.

Brush Accessory Installation and Removal (Figure B)

1. Installing the brush head: Hook the brush head (8) into the groove at the top of the heating plate (1). Press the brush head towards the housing. The brush head is installed when you hear it click into place.
2. Brush Removal: Gently pull the bottom lever of the brush (8) outward, and the brush (8) can be removed.
3. Using the brush allows steam to better penetrate clothing, achieving a superior ironing effect. It can also be used to remove hair, velvet, and animal fur.

Storage and Maintenance

1. After ironing is completed, first pour out the water in the water tank (7), then reattach the steam brush, heat until the temperature indicator light (3) shows blue, press the steam boost button (4), until no steam comes out from the steam panel. This aims to dry out any residual water that was not completely poured out from the steam brush, preventing corrosion of the heating plate inside.
2. Ensure that when no more steam is emitting, turn off the product's internal water pump for water extraction. After the steam panel has completely stopped emitting steam, unplug the power cord and allow it to cool while standing upright.
3. When the appliance has cooled down completely, store the steamer in a safe place to prevent damage or other dangers from children..

CLEANING

Please note: Before cleaning the steamer, the appliance must be disconnected from the power supply.

Any deposits, starch or adhesive residues on the heating plate can be removed with a damp cloth or a non-abrasive liquid cleaning agent. Do not scratch the plate with steel wool or metal tools. The plastic parts can be cleaned with a damp cloth and then wiped dry with a dry cloth.

DISPOSAL

At the end of its service life, this product must be returned to a collection point for recycling electrical and electronic equipment.



**Extensive maintenance that requires access to the internal parts of the appliance should only be carried out by a specialized service center!
Failure to comply with the manufacturer's instructions will invalidate the right to warranty repairs!**

ALISEO

ALISEO GmbH • Leutkirchstraße 63 • 77723 Gengenbach • Germany

+49 (0) 7803 60279-0

info@aliseo.de

www.aliseo.de